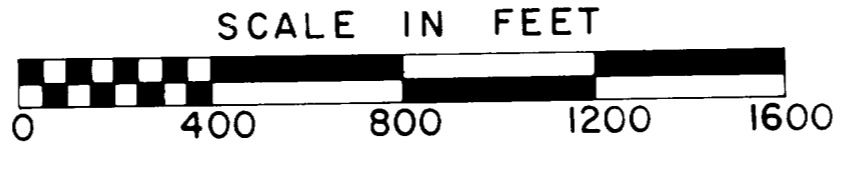


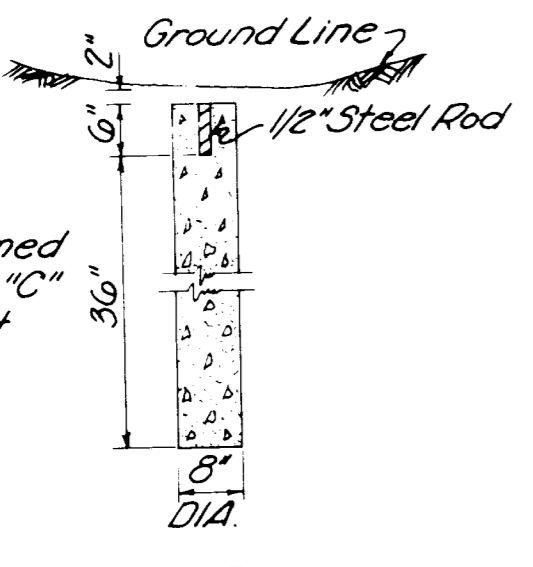
CENTERLINE SURVEY PLAT

U.S. ROUTE 40 - SEC. 5.04
 BELMONT COUNTY, OHIO
 KIRKWOOD TOWNSHIP R 6, T 9, SEC. 2
 UNION TOWNSHIP R 5, T 8, SECS. 32 26

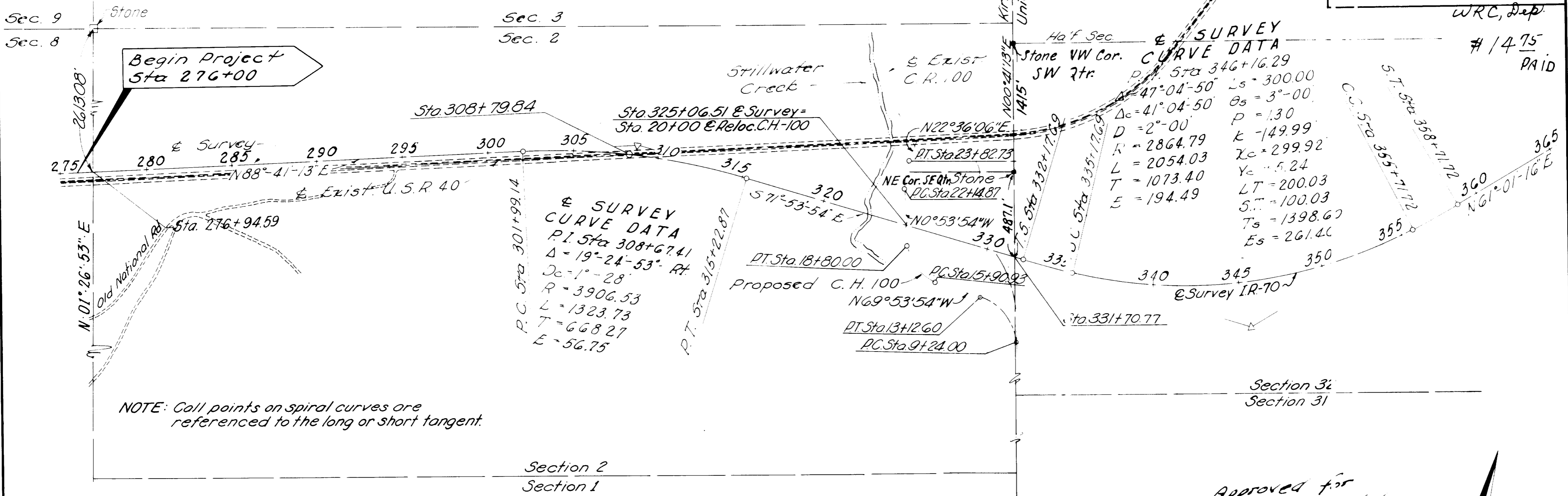


RECEIVED JUNE 10, 1964
 RECORDED JUNE 22, 1964
 BOOK 12 PAGE 87
 Nick Munas
 County Recorder

- NOTES
 1. Upper 6" To Be Formed
 2. Concrete To Be Class "C"
 3. Monuments To Be Set By Contractor.



CENTERLINE REFERENCE MONUMENT SECTION



NOTE: Call points on spiral curves are referenced to the long or short tangent.

THIS IMPROVEMENT HAS BEEN DECLARED A LIMITED ACCESS HIGHWAY FROM STATION 276+00 TO STATION 412+58.02 BY ACTION OF THE DIRECTOR OF HIGHWAYS AND RECORDED IN VOLUME 47 PAGE 690 OF THE DIRECTOR'S JOURNAL PURSUANT TO LAW

CENTERLINE MONUMENT ASSEMBLIES on CO. HWY. 100	
STATION	LOCATION
PC 9+24.00	E
PT 13+12.60	"
PC 15+90.93	"
PT 18+80.00	"
PC 22+14.87	"
PT 23+82.73	"
TOTAL 6 MONUMENTS	

CURVE DATA RELOCATION C. H. 100

P.I. STA.	Δ	D	R	T	L	E
23+00.00	23°-30'-00"	14°-00'-00"	409.26	85.13	167.86	876
17+55.88	69°-00'-00"	23°-52'-24"	240.00	164.95	289.07	51.22
11+51.80	75°-00'-00"	19°-18'-00"	296.87	227.80	388.60	77.33

CENTERLINE REFERENCE MONUMENTS WILL BE SET DURING CONSTRUCTION

CENTERLINE MONUMENTS on U.S.R.-40			
STATION	LOCATION	STATION	LOCATION
POT 280+00	E	ST 358+71.72	E
POT 287+00	"	POT 363+00	"
POT 294+00	"	T.S. 369+31.27	"
PC 301+99.14	"	SC 372+31.27	"
P.O.C. 308+00	"	POC 377+00	"
P.T. 315+22.87	"	POC 384+00	"
P.O.T. 324+00	"	CS 388+67.15	"
T.S. 332+17.69	"	ST 391+67.15	"
SC 335+17.69	"	POT 398+00	"
POC 339+00	"	POT 404+00	"
POC 346+00	"	POT 410+00	"
POC 353+00	"	Total 24 Monuments	
CS 355+71.72	"		

* SURVEY CURVE DATA
 P.I. Sta 380+88.25
 Δ = 38°-43'-03" Ls = 300.00
 Δc = 32°-43'-03" θs = 3°-00'
 D = 2°-00' P = 1.30
 R = 2864.79' k = 149.99'
 L = 1635.88' Xc = 299.92'
 T = 840.01' Yc = 5.24'
 E = 120.86' LT = 200.03'
 S.T. = 160.63'
 Ts = 1156.98'
 Es = 113.06'

I hereby certify that this Plat is a true delineation of a survey made for the Ohio Department of Highways in 1961 by Rackoff Associates.
 David S. Guthrie
 Date Nov. 21, 1963
 Registered Surveyor No. 4378

SIGNED Earl W. Nelson
 Earl W. Nelson
 DATE 11-26-63 DIVISION DEPUTY DIRECTOR

Approved for Recording - 4/4/64
 J. J. Beattie
 County Engr.

End Project Sta 411+98.02