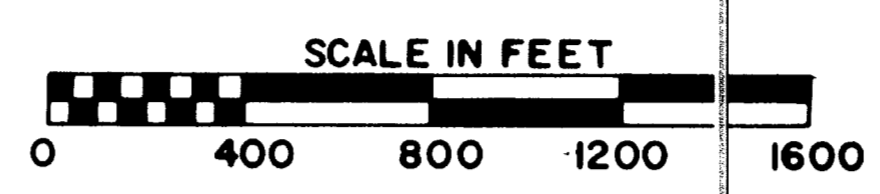
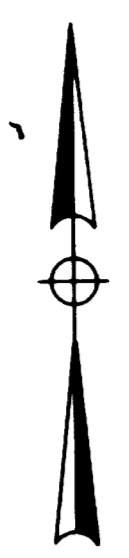


CENTERLINE SURVEY PLAT

U.S. ROUTE 40- SEC. 0.00
 BELMONT COUNTY, OHIO
 KIRKWOOD TOWNSHIP R-6 T-9 SEC. 26 & 32

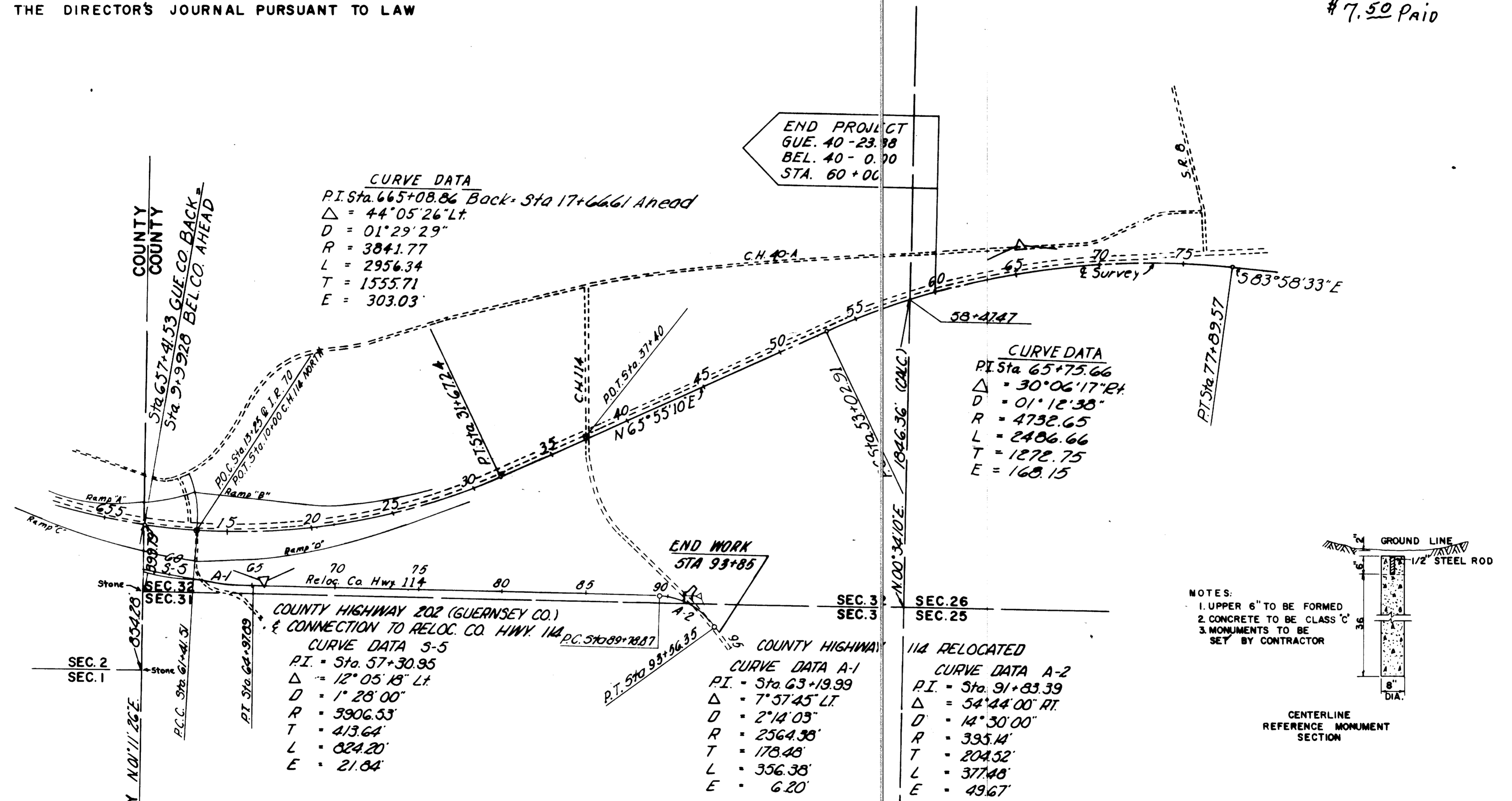


57780

RECEIVED DEC. 18 1963
 RECORDED DEC. 18 1963
 BOOK 12 PAGE 72
Nick Munn
 County Recorder
By W. R. Calver
 Dep.

\$7.50 PAID

THIS IMPROVEMENT HAS BEEN DECLARED A LIMITED ACCESS HIGHWAY FROM STATION 9+99.28 TO STATION 60+00 BY ACTION OF THE DIRECTOR OF HIGHWAYS AND RECORDED IN VOLUME 47 PAGE 690 OF THE DIRECTOR'S JOURNAL PURSUANT TO LAW



CENTERLINE REFERENCE MONUMENTS WILL BE SET BEFORE OR AFTER CONSTRUCTION

| REFERENCE MONUMENTS | | MONUMENT ASSEMBLIES | |
|---------------------|----------|-------------------------|----------|
| U.S. ROUTE 40 | | COUNTY HIGHWAY 114 | |
| STATION | LOCATION | STATION | LOCATION |
| P.O.C. 14+00 | E | P.C.G. 61+41.51 | E |
| P.O.C. 20+00 | " | P.T. 64+97.89 | " |
| P.O.C. 26+00 | " | P.O.T. 73+00 | " |
| P.T. 31+67.24 | " | P.O.T. 81+00 | " |
| P.O.T. 39+00 | " | P.C. 89+78.87 | " |
| P.O.T. 46+00 | " | P.T. 93+56.35 | " |
| P.C. 53+02.91 | " | | |
| P.O.C. 59+00 | " | | |
| Total Monuments 8 | | Total Mon. Assemblies 6 | |

Approved for Record, Dec. 17, 1963
E. J. ...
R. J. ...
 Belmont Co. Eng.

I hereby certify that this Plat is a true delineation of a survey made for the Ohio Department of Highways in 1962 by
 Rackoff Associates.
David S. Guthrie
 DAVID S. GUTHRIE

Date Oct. 4, 1963
 Registered Surveyor No. 4378

SIGNED *James T. Holden*
 JAMES T. HOLDEN
 Registered Surveyor No. 3766
 DATE Nov. 12, 1963 DIVISION DEPUTY DIRECTOR