

CENTER LINE SURVEY PLAT

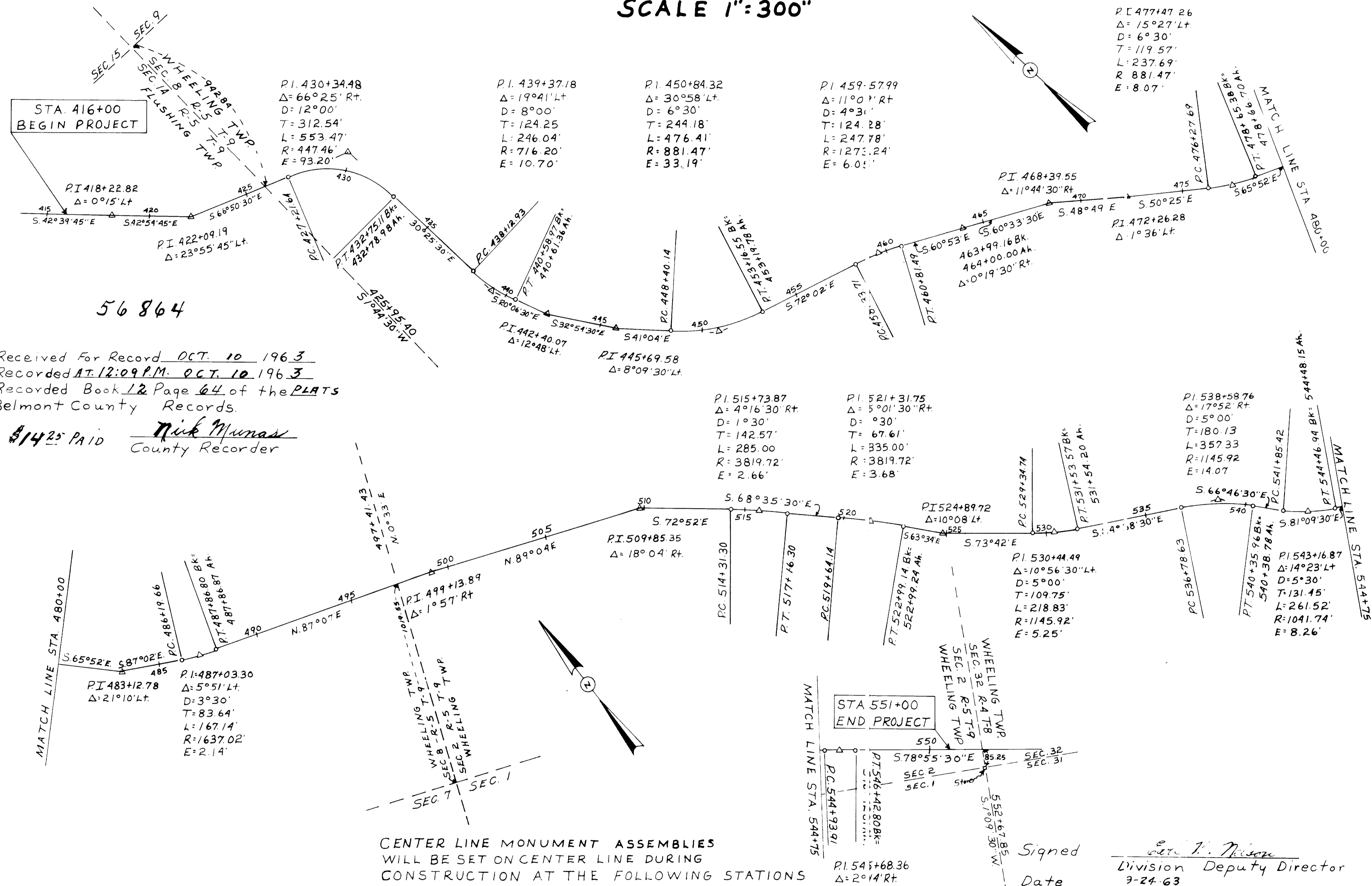
S.R. 331 SEC. 7.88

BELMONT COUNTY OHIO

FLUSHING TWP. T-9N R-5W SEC. 14

WHEELING TWP. T-9N R-5W SEC. 8 & 2

SCALE 1" = 300"



Received For Record DCT. 10 1963
 Recorded AT 12:09 P.M. OCT. 10 1963
 Recorded Book 12 Page 64 of the PLATS
 Belmont County Records.

\$14.25 PAID Nick Munas
 County Recorder

CENTER LINE MONUMENT ASSEMBLIES
 WILL BE SET ON CENTER LINE DURING
 CONSTRUCTION AT THE FOLLOWING STATIONS

- | | | | | |
|---------------------|---------------------|---------------------|---------------------|---------------------|
| P.O.T. 416+00 | PI. 442+40.07 | PI. 472+26.28 | P.O.T. 504+00 | PT. 531+53.57 Bk. * |
| PI. 418+22.82 | PI. 445+69.58 | PC. 476+27.69 | PI. 509+85.35 | PC. 536+78.63 |
| PI. 422+09.19 | PC. 448+40.14 | PT. 478+65.38 Bk. * | PC. 514+31.30 | PT. 540+35.96 Bk. * |
| PC. 427+21.64 | PT. 453+16.55 Bk. * | PC. 483+12.78 | PT. 517+16.30 | PC. 541+85.42 |
| POC. 429+98.38 | PC. 458+33.71 | PC. 486+19.66 | PC. 519+64.14 | PT. 544+46.94 Bk. * |
| PT. 432+75.11 Bk. * | PT. 460+81.49 | PT. 487+86.80 Bk. * | PT. 522+99.14 Bk. * | PC. 544+93.91 |
| PC. 438+12.93 | PI. 463+99.16 Bk. * | P.O.T. 493+50 | PI. 524+89.72 | PT. 546+42.80 Bk. * |
| PT. 440+58.97 Bk. * | PI. 468+39.55 | PI. 499+13.89 | PC. 529+34.75 | P.O.T. 551+00 |

Signed Carl N. Wilson
 Division Deputy Director
 Date 9-24-63

I hereby certify that this plot is
 a true delineation of a survey made
 for the Ohio Department of Highways
 in 1963 by the State of Ohio

Registered Surveyor
 Date 9-24-63

* For Equation, Refer To Respective Location on Plan

422-3
 Applied for recording Bel. Co. Eng.