

This improvement has been declared a Limited Access Highway from Station 411+40 to Station 890+41.88 by action of the Director of Highways and recorded in Volume 44, Page 921 of the Director's Journal pursuant to law

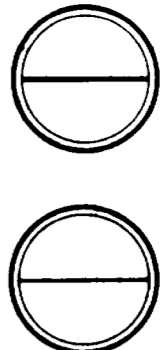
LOCATION PLAN

BEL-40-779

BELMONT COUNTY
UNION TWP SEC'S 2,8,14,20 & 26, T-8-N,R-5-W
RICHLAND TWP SEC. 33,T-7-N,R-4-W

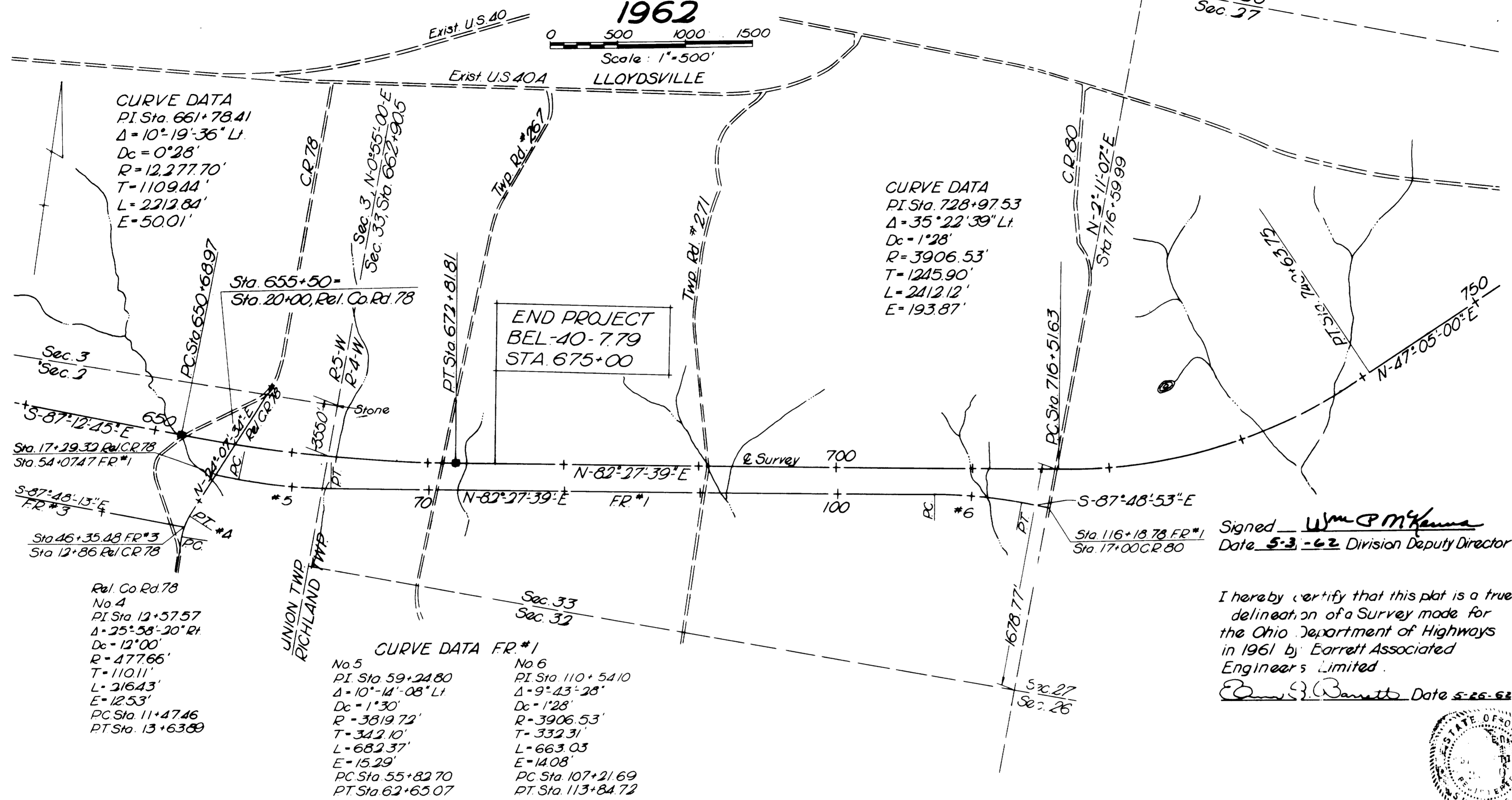
RECEIVED JUNE 12 1962
RECORDED 12:14 A.M. 6/29 62
BOOK 12 - PAGE 22
Nick Munas
BELMONT COUNTY RECORDER

FED. RD. DIVISION	STATE	PROJECT
2	OHIC	BEL-40-779 LIMITED ACCESS



1962

Scale: 1"=500'



CURVE DATA
 PI Sta. 661+78.41
 $\Delta = 10^{\circ}19'36''$ Lt.
 $D_c = 0^{\circ}28'$
 $R = 12,277.70'$
 $T = 1109.44'$
 $L = 2212.84'$
 $E = 50.01'$

CURVE DATA
 PI Sta. 728+97.53
 $\Delta = 35^{\circ}22'39''$ Lt.
 $D_c = 1^{\circ}28'$
 $R = 3906.53'$
 $T = 1245.90'$
 $L = 2412.12'$
 $E = 193.87'$

CURVE DATA FR.#1

No 5 PI Sta. 59+24.80 $\Delta = 10^{\circ}14'08''$ Lt. $D_c = 1^{\circ}30'$ $R = 3819.72'$ $T = 342.10'$ $L = 682.37'$ $E = 15.29'$ PC Sta. 55+82.70 PT Sta. 62+65.07	No 6 PI Sta. 110+54.10 $\Delta = 9^{\circ}43'28''$ $D_c = 1^{\circ}28'$ $R = 3906.53'$ $T = 332.31'$ $L = 663.03'$ $E = 14.08'$ PC Sta. 107+21.69 PT Sta. 113+84.72
--	--

Rel. Co. Rd. 78
No 4
PI Sta. 12+57.57
 $\Delta = 25^{\circ}58'20''$ Rt.
 $D_c = 12^{\circ}00'$
 $R = 477.66'$
 $T = 110.11'$
 $L = 216.43'$
 $E = 12.53'$
PC Sta. 11+47.46
PT Sta. 13+63.89

Signed Wm P McKenna
Date 5-3-62 Division Deputy Director

I hereby certify that this plat is a true delineation of a Survey made for the Ohio Department of Highways in 1961 by Earrett Associated Engineers Limited.
Edmund S. Bennett Date 5-26-62



LEGEND:
Monuments ■

Approved for recording
June 4 1962
E. J. Ponzalanda
C. Eng.