

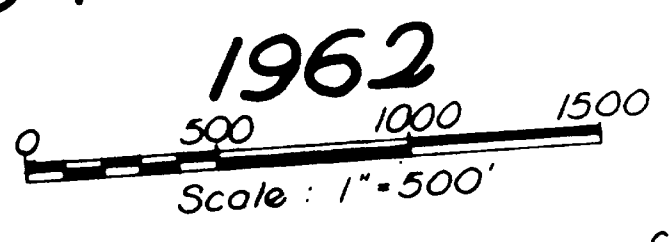
LOCATION PLAN

BEL-40-7.79
BELMONT COUNTY
UNION TWP SEC'S 2, 8, 14, 20 & 26, T-8-N, R-5-W
RICHLAND TWP SEC. 33, T-7-N, R-4-W

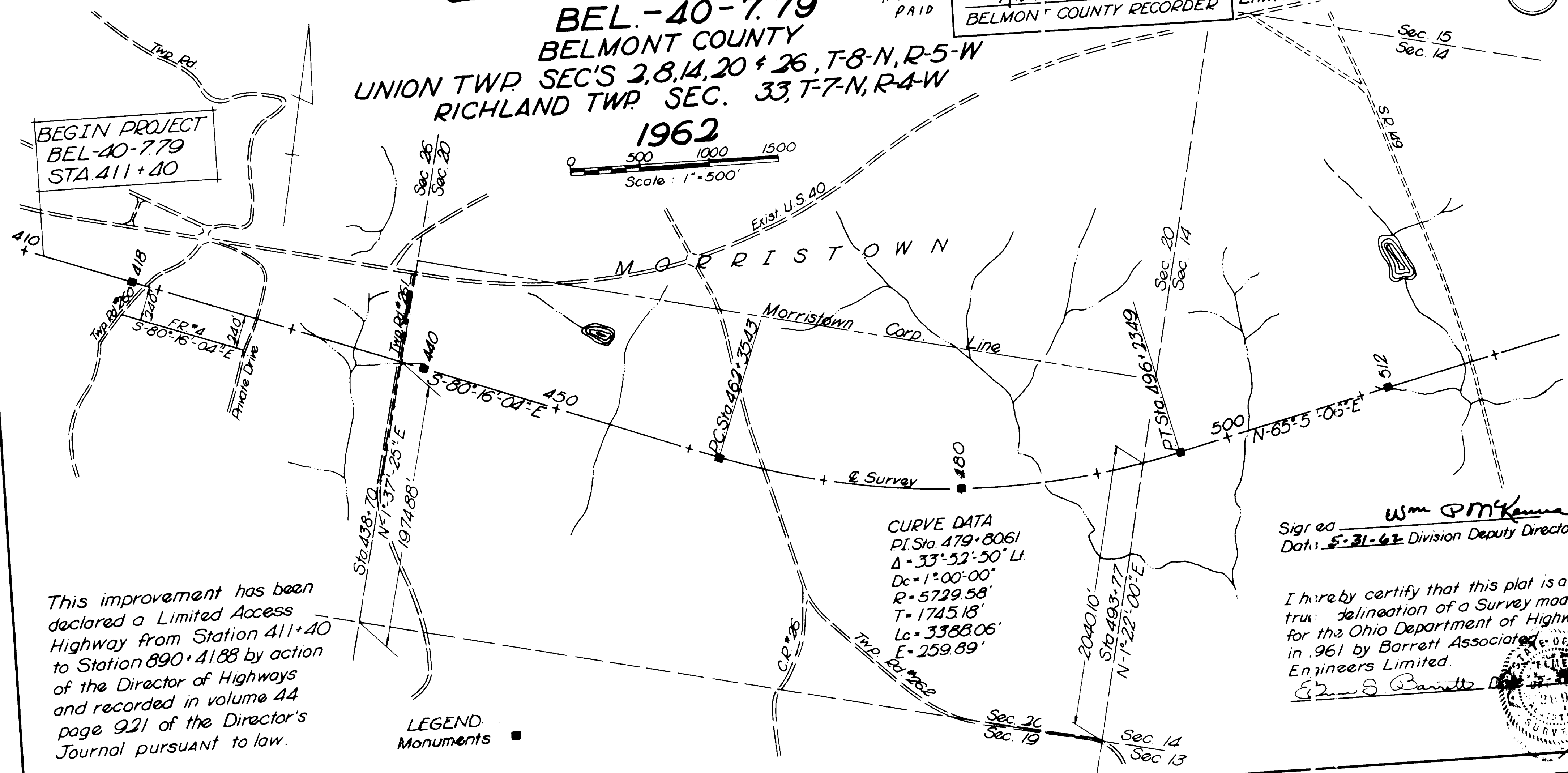
RECEIVED JUNE 12 1962
RECORDED 10:14 AM 6/12 1962
BOOK L? PAGE 21
Ned Munas
BELMONT COUNTY RECORDER

FED. RD. DIVISION	ST. FE	PROJECT
2	0410	BEL-40-7.79

LIMITED ACCESS



BEGIN PROJECT
BEL-40-7.79
STA 411+40



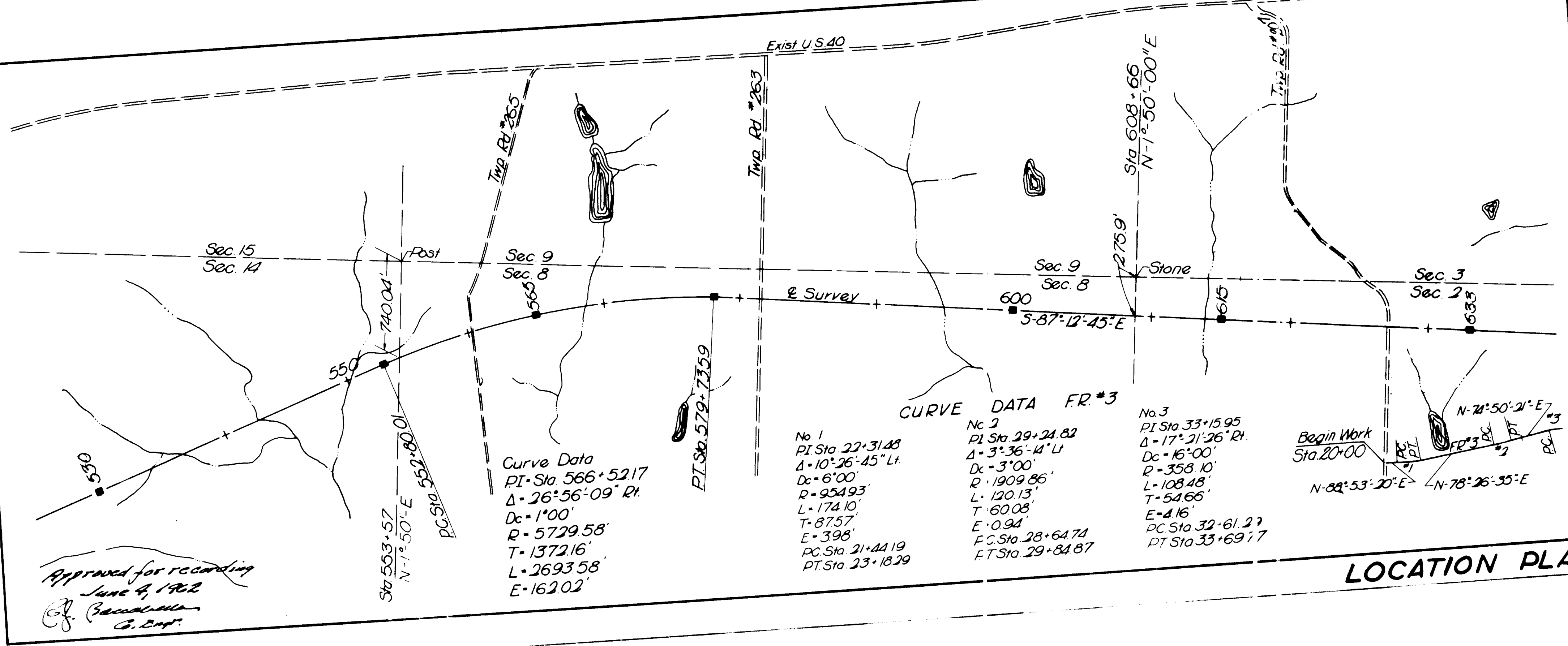
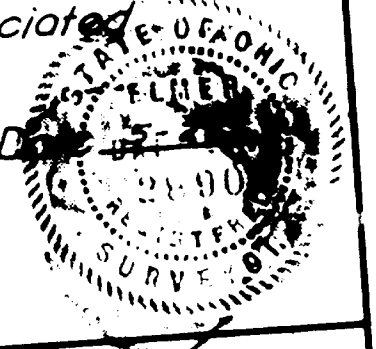
CURVE DATA
 PI Sta 479+8061
 $\Delta = 33^{\circ}52'50''$ Lt.
 $Dc = 1^{\circ}00'00''$
 $R = 5729.58'$
 $T = 1745.18'$
 $Lc = 3388.06'$
 $E = 259.89'$

Signed Wm PMKenna
 Dat: 5-31-62 Division Deputy Director

This improvement has been declared a Limited Access Highway from Station 411+40 to Station 890+4188 by action of the Director of Highways and recorded in volume 44 page 921 of the Director's Journal pursuant to law.

LEGEND
 Monuments ■

I hereby certify that this plat is a true delineation of a Survey made for the Ohio Department of Highways in 1961 by Barrett Associated Engineers Limited.
Edmund S. Barrett



Curve Data
 PI Sta 566+5217
 $\Delta = 26^{\circ}56'09''$ Rt.
 $Dc = 1^{\circ}00'$
 $R = 5729.58'$
 $T = 1372.16'$
 $L = 2693.58'$
 $E = 162.02'$

No 1
 PI Sta 22+3148
 $\Delta = 10^{\circ}26'45''$ Lt.
 $Dc = 6^{\circ}00'$
 $R = 954.93'$
 $L = 174.10'$
 $T = 87.57'$
 $E = 3.98'$
 PC Sta 21+4419
 PT Sta 23+1829

CURVE DATA FR #3
 No 2
 PI Sta 29+24.82
 $\Delta = 3^{\circ}36'14''$ Lt.
 $Dc = 3^{\circ}00'$
 $R = 1909.86'$
 $L = 120.13'$
 $T = 60.08'$
 $E = 0.94'$
 PC Sta 28+64.74
 FT Sta 29+84.87

No 3
 PI Sta 33+15.95
 $\Delta = 17^{\circ}21'26''$ Rt.
 $Dc = 16^{\circ}00'$
 $R = 358.10'$
 $L = 108.48'$
 $T = 54.66'$
 $E = 4.16'$
 PC Sta 32+61.27
 PT Sta 33+69.77

Begin Work
 Sta 20+00
 $N-82^{\circ}53'20''$ E
 $N-78^{\circ}26'35''$ E

Approved for recording
 June 4, 1962
[Signature]
 C. Eng.

LOCATION PLAN