

LOCATION PLAN

INTERSTATE ROUTE 70 BELMONT COUNTY, OHIO
BEL-40-23.89
RICHLAND TWP. R.3, T.6 SEC 21
PEASE TWP. R.3, T.6 SEC'S. 15, 9, & 3 R.2, T.3 SEC'S 27 28 & 33

RECEIVED APRIL 9, 1962
RECORDED APR. 9, 1:21 P.M. 1962
BOOK 12 PAGE 17
NICK MUNRS
42941 COUNTY RECORDER

FED. RD. DIVISION	DATE	PROJECT
2	MIO	

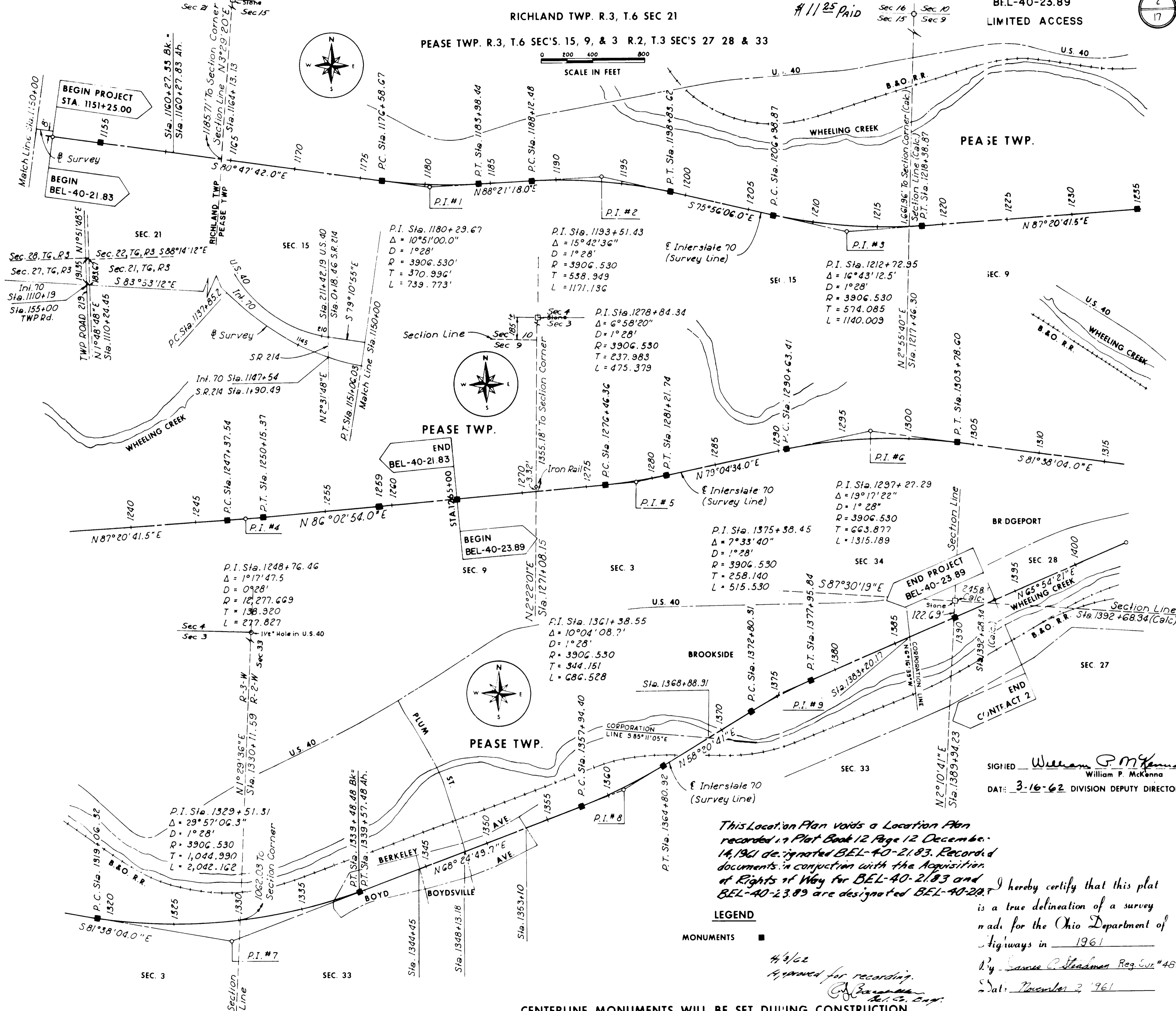
144
197

2
17

BELMONT COUNTY
BEL-40-23.89
LIMITED ACCESS

This improvement has been declared a limited access highway from Station 1151+25 to Sta. 1394+21.90, by action of the Director of Highways and recorded in volume 46, page 508 of the Director's Journal, pursuant to law.

SCALE IN FEET
0 200 400 800



This Location Plan voids a Location Plan recorded in Plat Book 12 Page 12 December 14, 1961 designated BEL-40-21.83. Recorded documents in conjunction with the Acquisition of Rights of Way for BEL-40-21.83 and BEL-40-23.89 are designated BEL-40-20.

LEGEND

MONUMENTS ■

4/3/62
Approved for recording.
[Signature]

SIGNED William P. McKenna
William P. McKenna
DATE: 3-16-62 DIVISION DEPUTY DIRECTOR

I hereby certify that this plat is a true delineation of a survey made for the Ohio Department of Highways in 1961
By James C. Steadman Reg. Sur. #46:4
Date: November 3, 1961

CENTERLINE MONUMENTS WILL BE SET DURING CONSTRUCTION