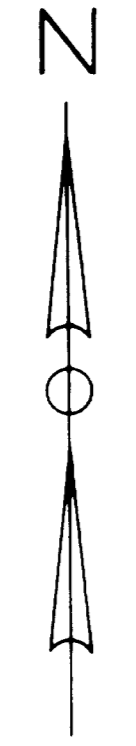
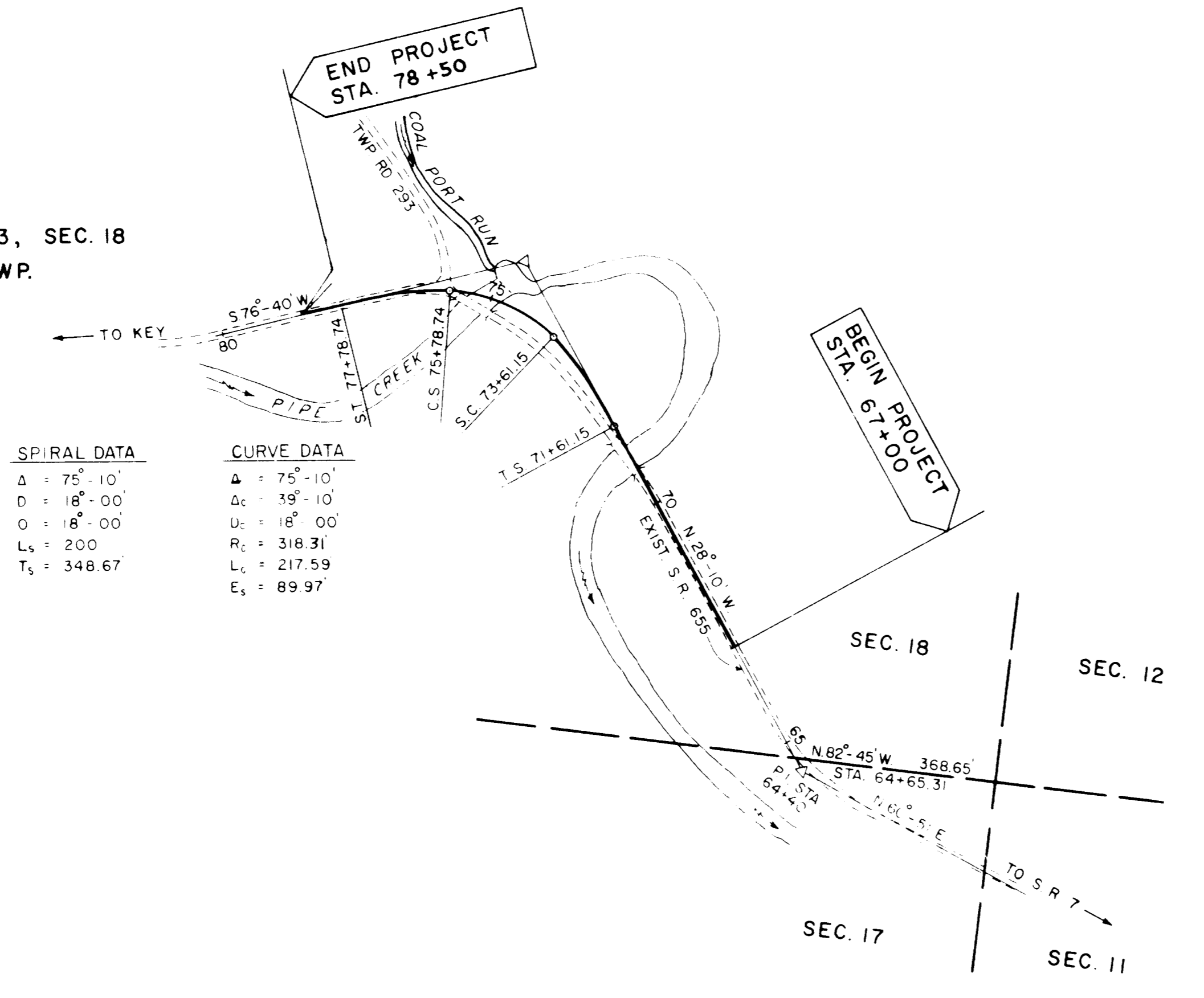


# LOCATION PLAN BEL-655-1.25 1962

SCALE: 1" = 200



T-4, R-3, SEC. 18  
MEAD TWP.



SPIRAL DATA

Δ	= 75° - 10'
D	= 18° - 00'
O	= 18° - 00'
L <sub>s</sub>	= 200
T <sub>s</sub>	= 348.67

CURVE DATA

Δ	= 75° - 10'
Δ <sub>c</sub>	= 39° - 10'
D <sub>c</sub>	= 18° - 00'
R <sub>c</sub>	= 318.31
L <sub>c</sub>	= 217.59
E <sub>s</sub>	= 89.97

#42939  
 Recd for Record April 9, 1962.  
 at 11:22 o'clock A.M.  
 Recorded April 9, 1962.  
 in Belmont County Record  
 of Plats, Volume 12, Page 15.

Niel Minnas, Recorder  
 \$1125 Paid

SIGNED Wm McKenna  
 DATE 3-12-62 DIVISION DEPUTY DIRECTOR

I HEREBY CERTIFY THAT THIS PLAT  
 IS A TRUE DELINEATION OF A SURVEY  
 MADE FOR THE OHIO DEPARTMENT OF  
 HIGHWAYS IN Oct & Dec 1961  
 BY Peace Associates of Ohio

Edward J. Paula DATE 11 Jan 1962

CENTER LINE MONUMENT ASSEMBLIES WILL BE  
 SET ON THE CENTER LINE DURING CONSTRUCTION  
 AT THE FOLLOWING STATIONS.

- STA. 67+00
- STA. 71+61.15
- STA. 73+61.15
- STA. 75+78.74
- STA. 77+78.74

2/24/62  
 Approved for Recording  
E. J. Green  
 Belmont County Engr.