

LOCATION PLAN

INTERSTATE ROUTE 70 BELMONT COUNTY, OHIO
BEL-40-21.83
RICHLAND TWP. R.3, T.6 SEC 21
PEASE TWP. R.3, T.6 SEC'S 15, 9, & 3 R.2, T.3 SEC'S 27 28 & 33

RECEIVED	19
RECORDED	19
BOOK	PAGE
COUNTY RECORDER	

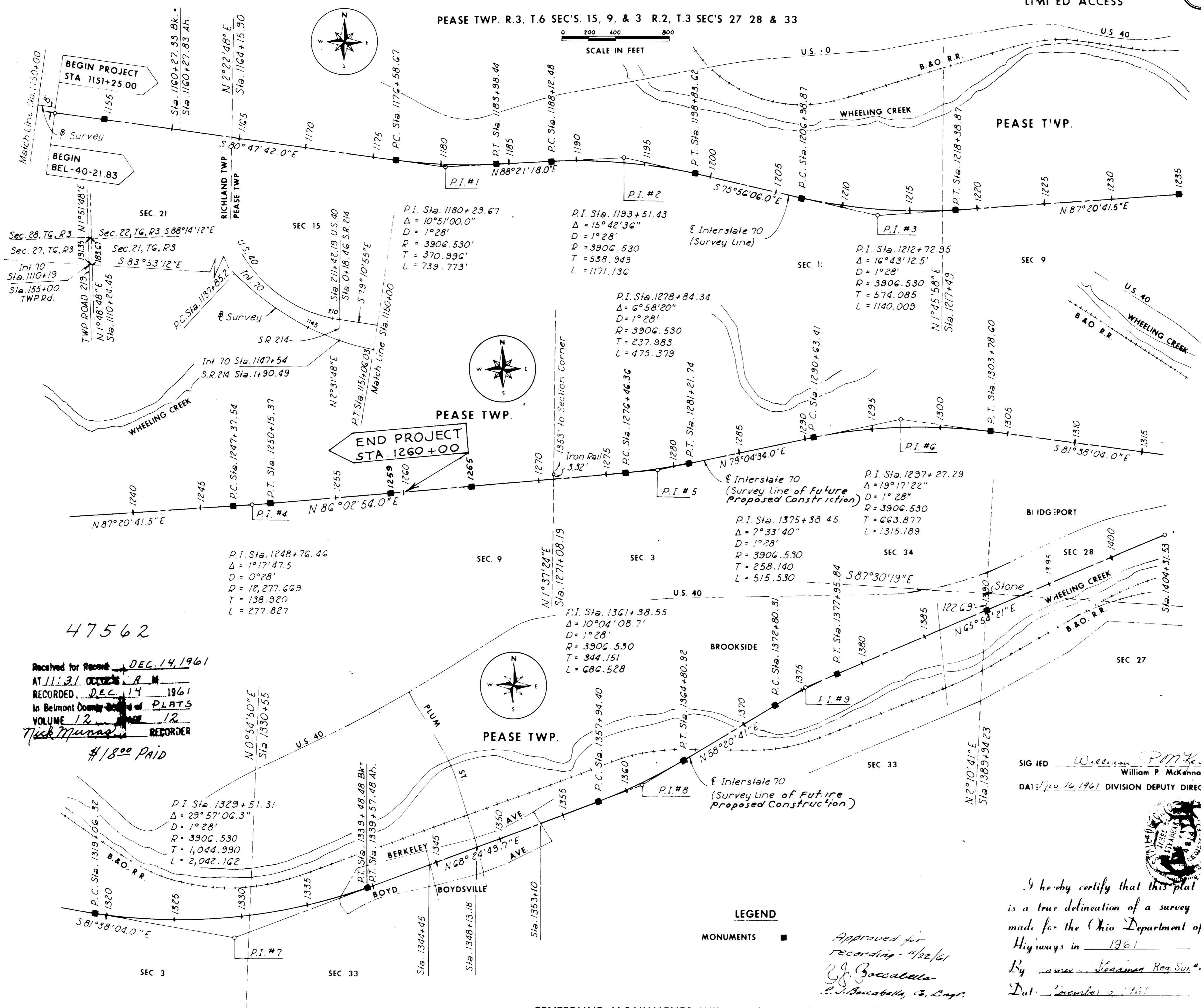
FED. RD. DIVISION	STA. E	PROJECT
2	OHIO	1-70-31223

128
139

BELMONT COUNTY
BEL-40-21.83
LIMITED ACCESS

2
13

This improvement has been declared a limited access highway from Station 1151+25 to Sta. 1394+21.90, by action of the Director of Highways and recorded in volume 46, page 508 of the Director's Journal pursuant to law.



47562

Received for Record DEC. 14, 1961
 AT 11:31 O'CLOCK A.M.
 RECORDED DEC. 14, 1961
 in Belmont County PLATS
 VOLUME 12 PAGE 12
Nick Murray RECORDER
 \$18.00 PAID

SIG IED William P. McKenna
 William P. McKenna
 DATE: Dec 16, 1961 DIVISION DEPUTY DIRECTOR



I hereby certify that this plat is a true delineation of a survey made for the Ohio Department of Highways in 1961
 By James Steamer Reg. Sur. #4814
 Dat. December 2, 1961

Approved for recording - 11/22/61
J.F. Boccabella
 J.F. Boccabella, C. Eng'r.

LEGEND
 MONUMENTS ■

CENTERLINE MONUMENTS WILL BE SET DURING CONSTRUCTION