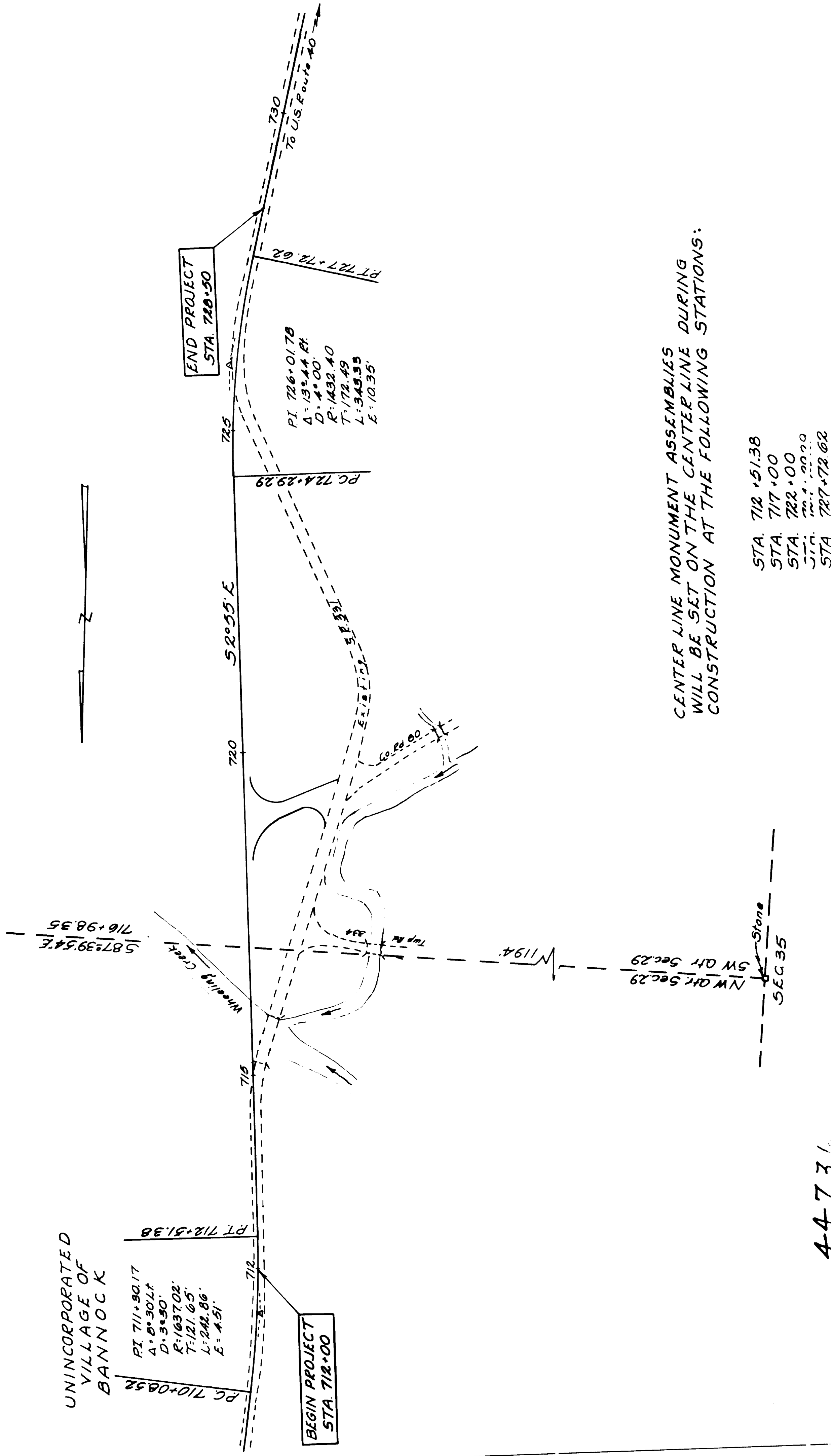


LOCATION PLAN BEL - 331 - 13.46

1961
SCALE: 1" = 100'



44734

COUNTY RECORDER
Received for Record JUNE 9 1961
at 10:40 O'clock A.M. 1961 in the
Recorded JUNE 9 1961 in the
Belmont County Record of Plats,
Plat Book No. 12 Page 3

Fee \$ 11.25 - Phil Neish County Recorder

COUNTY ENGINEER
Approved for Recording by the Belmont County
Engineer this 9th day of June 1961

R. J. Baccala
County Engineer

I hereby certify that this plat is correct
to the best of my knowledge and belief.

Wm. G. McKeown
Division Engineer
Date 5-25-61