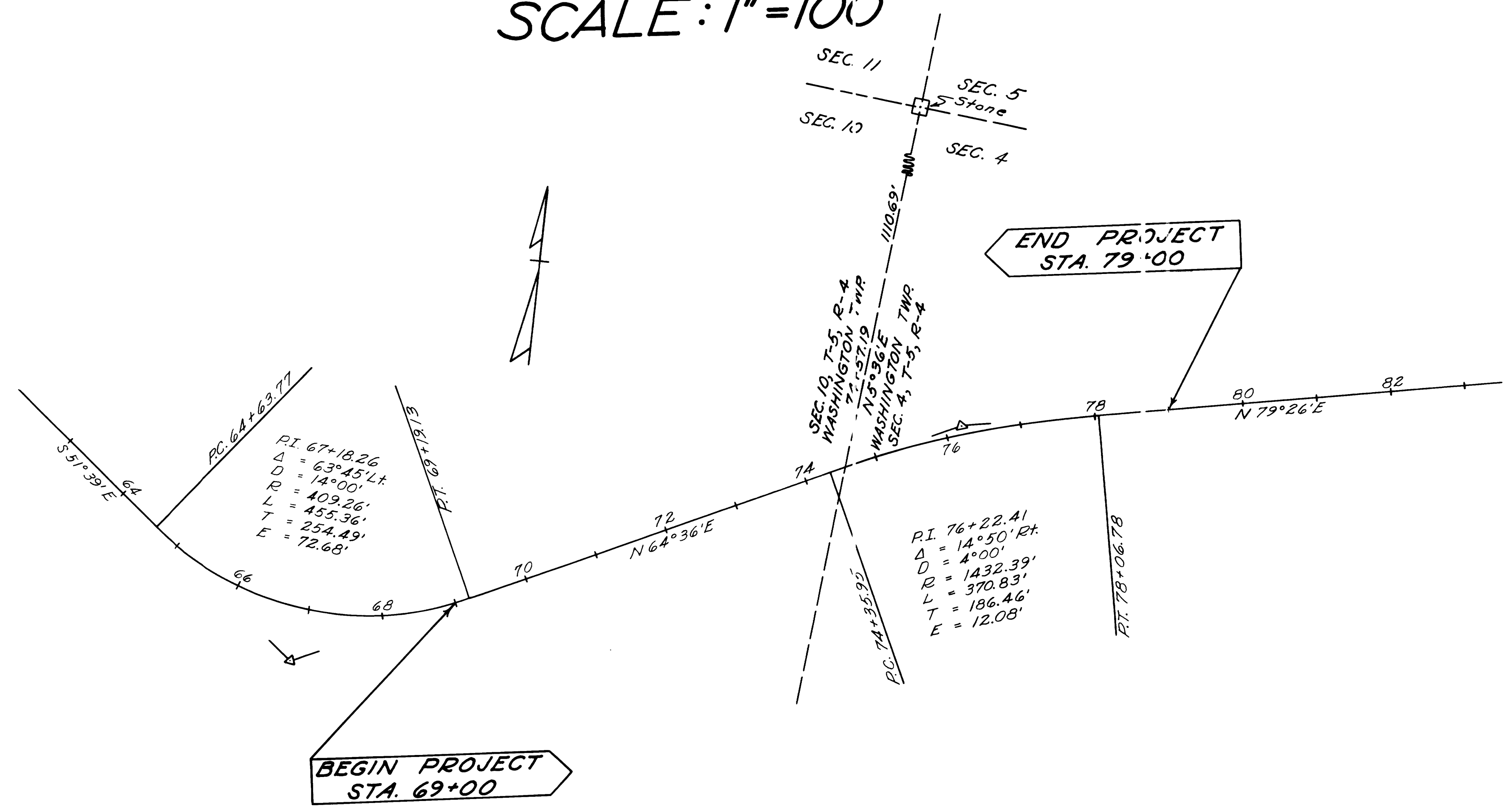


LOCATION PLAN BEL-148-16.79 1960

SCALE: 1"=100'



CENTER LINE MONUMENT ASSEMBLIES WILL BE SET ON CENTER LINE DURING CONSTRUCTION AT THE FOLLOWING STATIONS.

- P.T. 69+19.13
- P.C. 74+35.95
- P.T. 78+06.78

44424
 BELMONT CO. RECORD OF PLATS
 VOL. 12 PAGE 2
 RECEIVED
 MAY 22 12 31 PM '61
 RECORDED MAY 23 1961
 NICK MUNAS
 RECORDER

\$11.25 PAID

I hereby certify that this plat is correct to the best of my knowledge and belief.
 J. P. McKenna
 DIVISION ENGINEER DATE 5-9-61

Approved
 5/15/61 [Signature] Co. Engr.