

LOTS AND STREETS TO BE VACATED IN CRAWFORD HEIGHTS-MARTINS FERRY, O. 115

SCALE 1"=100'

SHRIVER-MCFARLAND-SURV'S.

JULY 1, 1974.

SHRIVER & MCFARLAND
SURVEYORS
MARTINS FERRY, OHIO

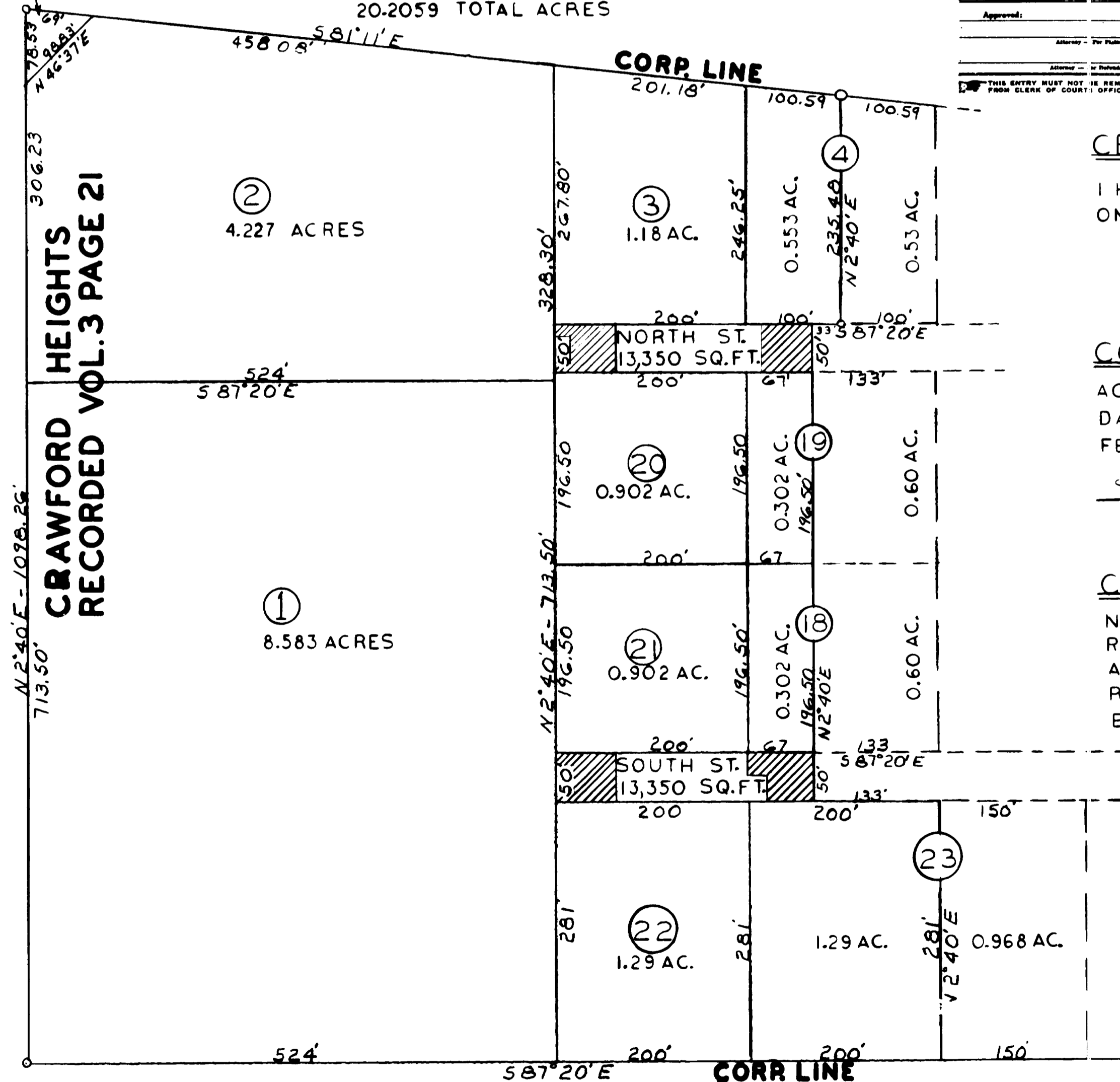
July 19, 1974

HARRISON LEASING CO.
0.0618 ACRES

ALL LOTS VACATED ARE OWNED BY THE MARTINS FERRY NEIGHBORHOOD DEVELOPMENT CORPORATION AND THE HARRISON LEASING CO.

LOTS TO BE VACATED— ALL OF LOTS 1-2-3-20-21-22 AND THE WEST PART OF LOTS 4-18-19 & 23—ALSO PARTS OF NORTH & SOUTH STREETS AS INDICATED.

19.593 ACRES IN LOTS
0.6129 ACRES IN STREETS
20.2059 TOTAL ACRES



COURT OF COMMON PLEAS OF BELMONT COUNTY, OHIO
DOCKET ENTRY 117-68

In Re: Vacations of Part of Crawford Heights and the City of Martins Ferry, Ohio
Case No. 74 - CIV - 218
Journal Vol. Page

Date of Entry SEPT. 10, 1974
This cause came on to be heard on the Petition of the owners of Crawford Heights Subdivision and the streets known as North and South Streets. From the evidence adduced the Court finds that the parties have complied with all required provisions of law, by virtue of Sections 711.17, 711.18 and 711.39 of the Revised Code of Ohio. It is therefore the finding of the Court that the plat of said subdivision of lots, including said North and South Streets be and is hereby vacated.
SPECIAL ENTRY.
APPROVED: [Signature]
Attorney for Plaintiff: [Signature]
Attorney for Defendant: [Signature]
THIS ENTRY MUST NOT BE REMOVED FROM CLERK OF COURT'S OFFICE

PERIMETER DESCRIPTION OF AREA TO BE VACATED IN CRAWFORD HEIGHTS.

Situated in the City of Martins Ferry, County of Belmont, State of Ohio, and being all of lots 1-2-3-20-21 & 22, the west part of lots 4-18-19-23 and parts of North and South Streets in Crawford Heights, the same being more particularly described as follows: Beginning for a description of same at the southwest corner of Lot No. 1 in Crawford Heights as recorded in Vol. 3, Page 21 of the Belmont County Record of Plats. Thence from this place of beginning S. 87° 20' E. 924.00 feet to a point from which the southeast corner of lot 23 bears S. 87° 20' E. 150.00 feet; thence N. 2° 40' E. 261.00 feet to the south line of South Street; thence therewith N. 87° 20' W. 133.00 feet; thence N. 2° 40' E. 495.00 feet to a point on the north line of North Street, from which point the southwest corner of Lot No. 4 bears N. 87° 20' W. 87.00 feet; thence along the north line of North Street S. 87° 20' W. 33.00 feet; thence N. 2° 40' E. 235.66 feet to the north line of Crawford Heights and the corporation line; thence therewith N. 81° 11' W. 880.85 feet to the northwest corner of lot No. 2, passing on line the northwest corner of lot No. 4 at 100.59 feet; thence along the west line of lots 1 and 2 and the corporation line S. 2° 40' W. 1094.25 feet to the place of beginning, and containing 20.2059 acres more or less.

CERTIFICATION

I HEREBY CERTIFY THIS PLAT WAS PREPARED BY ME ON JULY 1-1974.

BY Russ McFarland
SHRIVER & MCFARLAND-REC. SURV'S.

COUNTY AUDITOR

ACCEPTED FOR RECORD
DATE Sept. 23rd 1974
FEE \$ 3.50 PAID

H. O. Hall
AUDITOR By P. Castiglione

COUNTY RECORDER

NO. 117988
RECEIVED FOR RECORD SEPT. 23, 1974
AT 11 O'CLOCK A.M.
RECORDED OCTOBER 4, 1974 VOL 14 PAGE 115
BELMONT COUNTY PLAT RECORDS

Wich Musas \$ 25.50
RECORDER FEE PAID
By: Stanley Lemons, Deputy

PREPARED IN ACCORDANCE WITH SECTIONS 711.18-711.19-711.20-711.17 711.39 AND 723.09 OHIO REVISED CODE