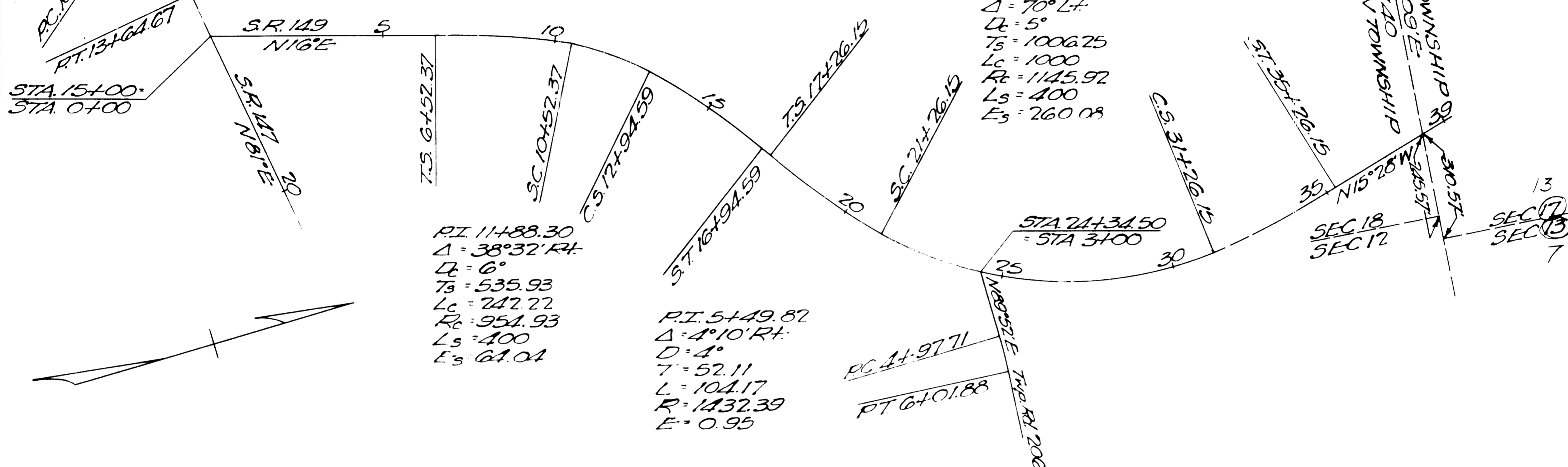


LOCATION PLAN BEL-149-(0.00-0.30) 1958 SCALE 1" = 200'

Received for Record AUG. 4, 1958
AT 9:16 O'CLOCK A.M.
RECORDED AUG. 4, 1958
In Belmont County Record of Plats
VOLUME 11 PAGE 73
Nick Munas RECORDER
\$ 11.75 Paid

P.I. 7+77.83
 $\Delta = 10^{\circ}26' Lt.$
 $D = 8^{\circ}$
 $T = 65.39$
 $L = 130.42$
 $R = 716.20$
 $E = 2.98$

P.I. 12+27.45
 $\Delta = 30^{\circ}58' Rt.$
 $D = 11^{\circ}$
 $T = 144.29$
 $L = 281.51$
 $R = 570.87$
 $E = 19.62$

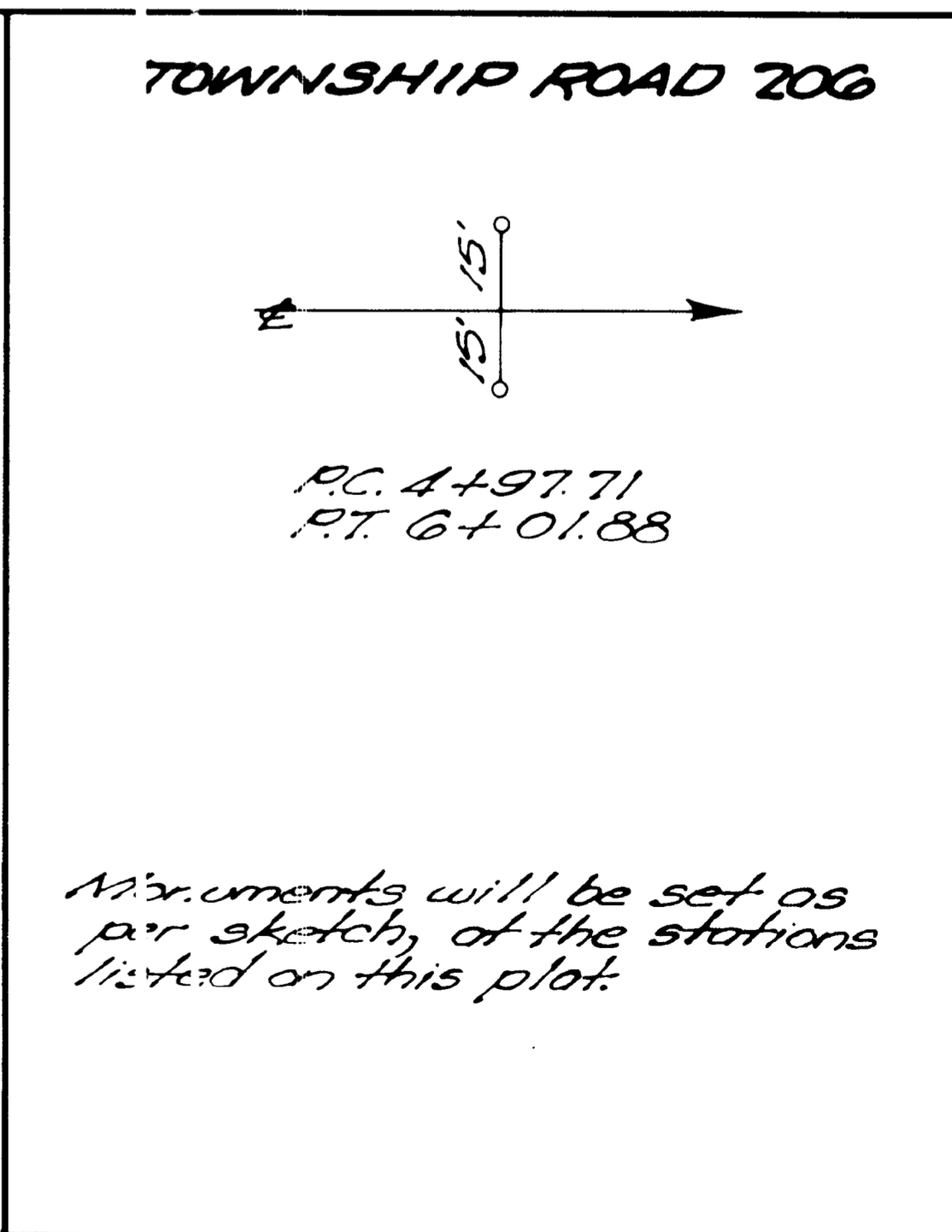
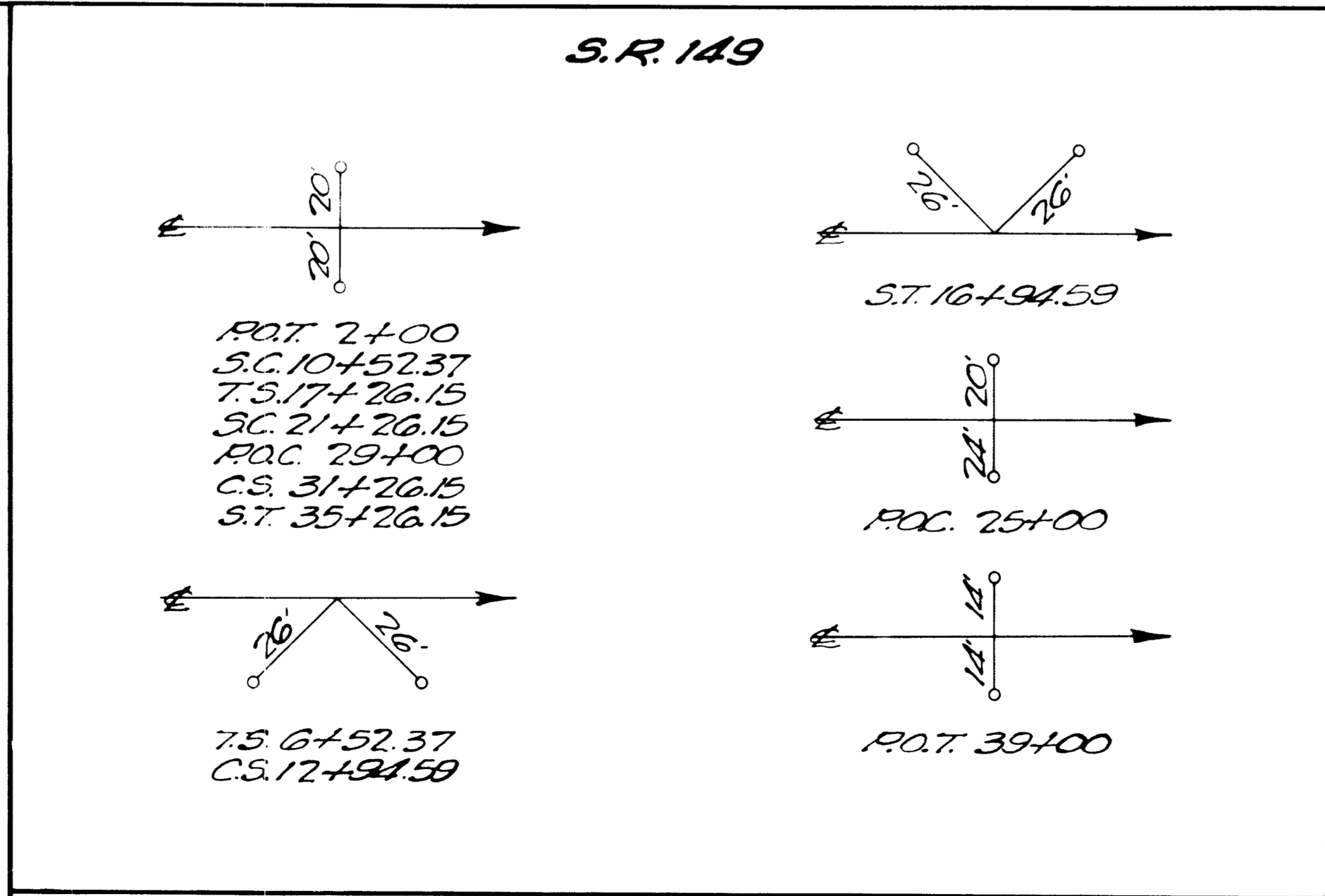
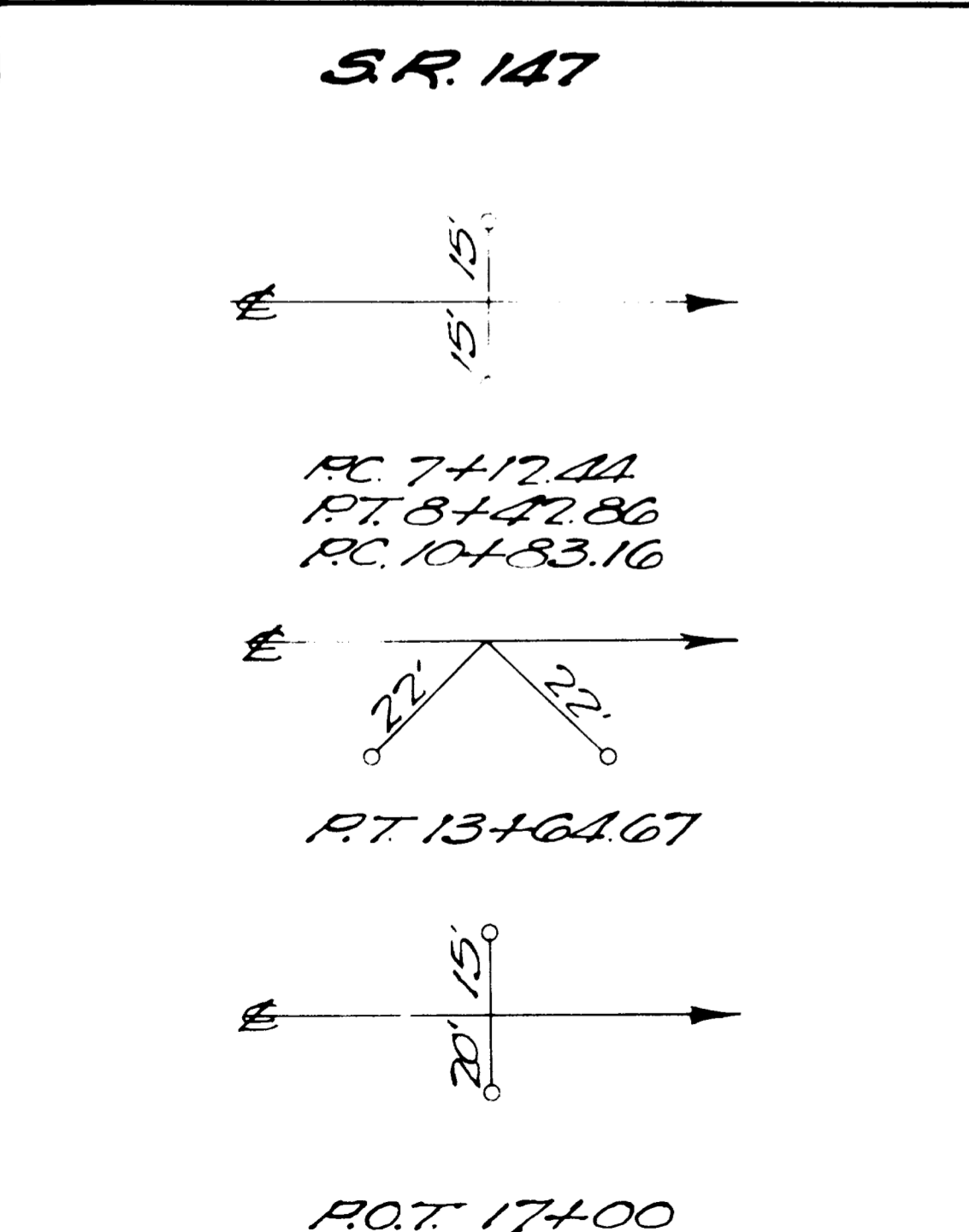


P.I. 11+88.30
 $\Delta = 38^{\circ}32' Rt.$
 $D = 6^{\circ}$
 $T = 535.93$
 $L = 242.22$
 $R = 951.93$
 $L_s = 400$
 $E_s = 61.04$

P.I. 5+49.82
 $\Delta = 4^{\circ}10' Rt.$
 $D = 4^{\circ}$
 $T = 52.11$
 $L = 104.17$
 $R = 1432.39$
 $E = 0.95$

P.I. 27+32.40
 $\Delta = 70^{\circ} Lt.$
 $D = 5^{\circ}$
 $T = 1006.25$
 $L_c = 1000$
 $R_c = 1145.92$
 $L_s = 400$
 $E_s = 260.08$

CENTERLINE MONUMENTS WILL BE PLACED 4" BELOW GROUND BEFORE OR AFTER CONSTRUCTION



I hereby certify that this Plat is correct to the best of my knowledge and belief.

NE Quirk

7-21-58

