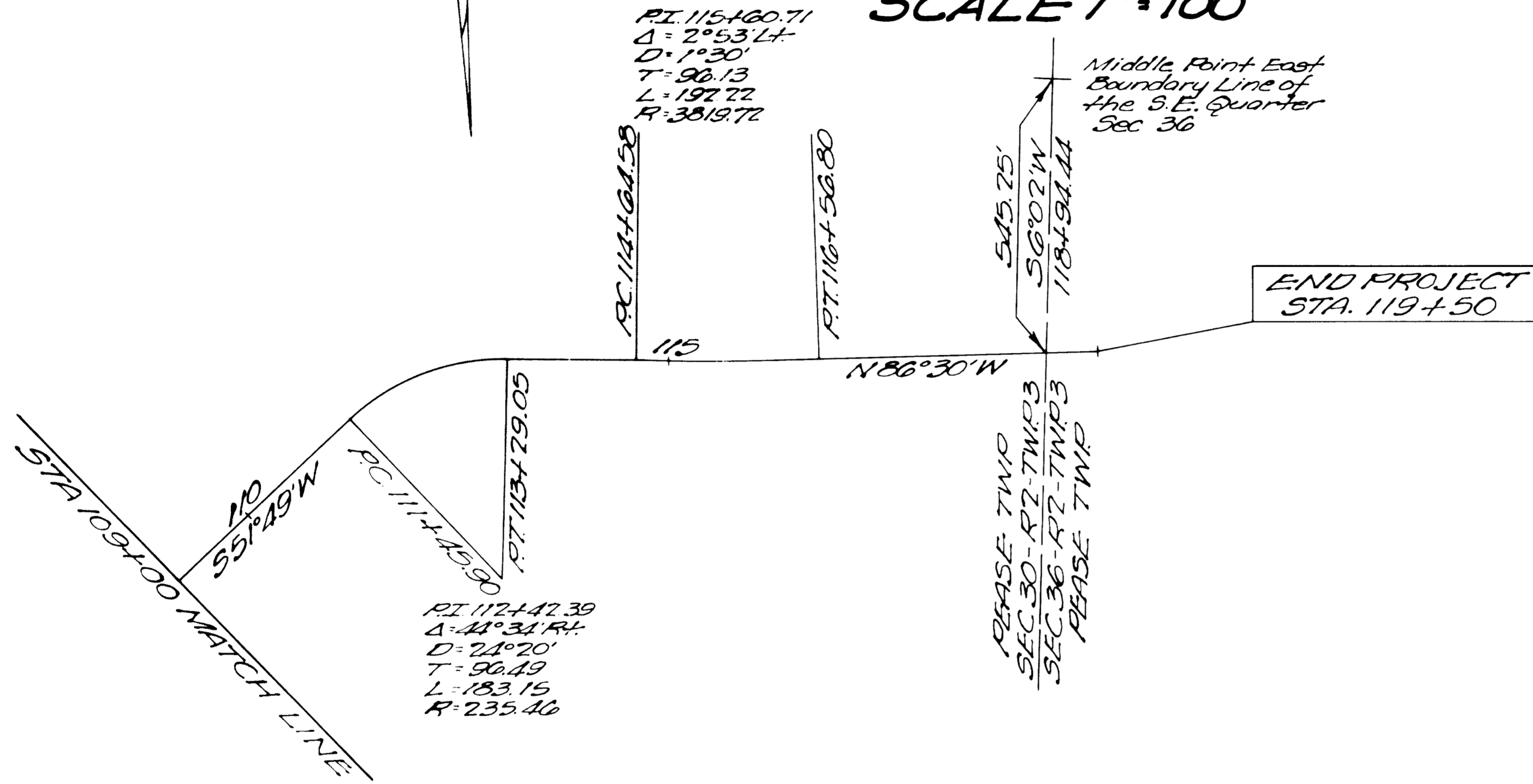
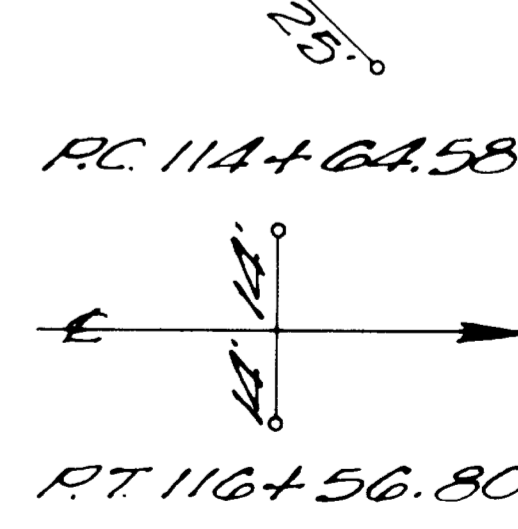
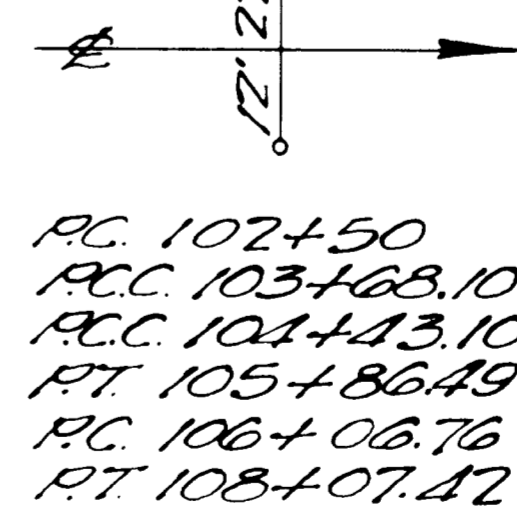
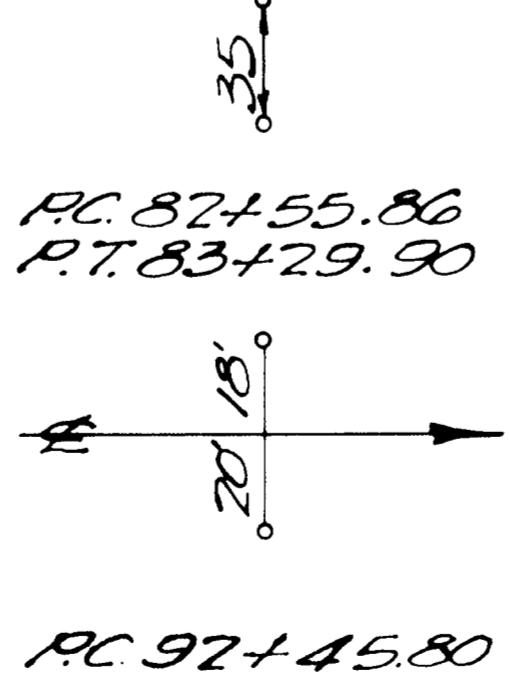
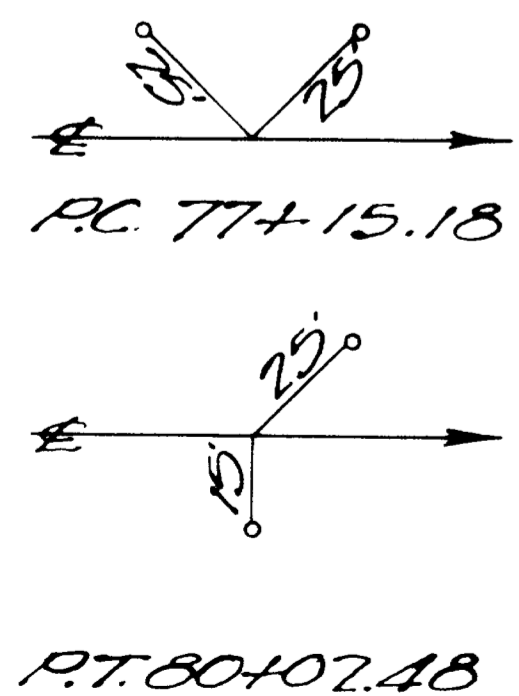
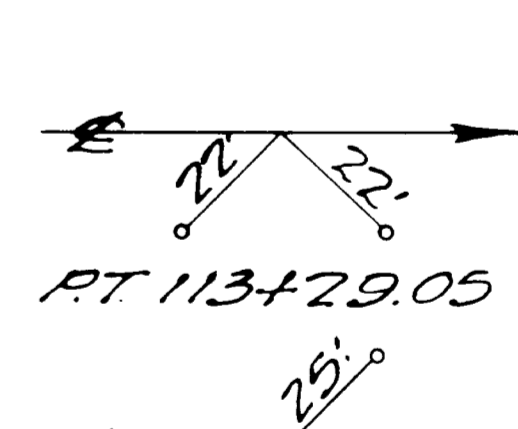
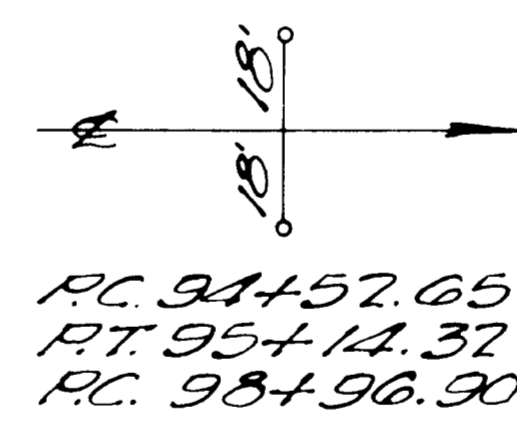
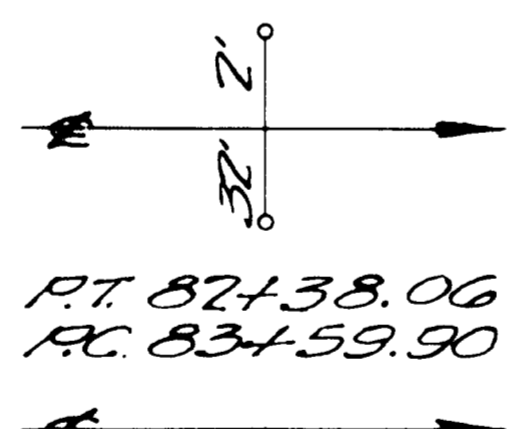
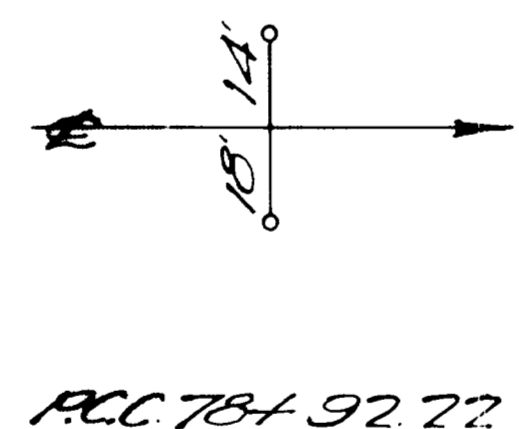
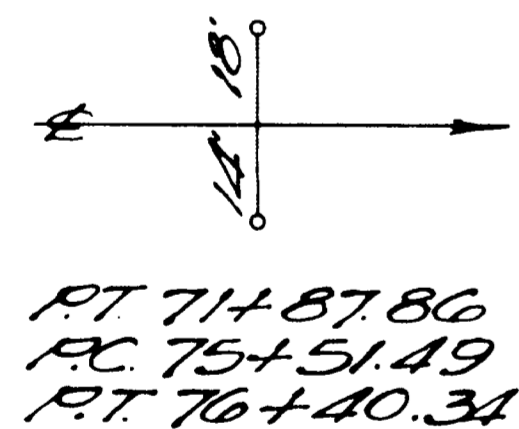


LOCATION PLAN BEL-647-1.38 1958

SCALE 1" = 100'



CENTERLINE MONUMENTS WILL BE PLACED 4" BELOW GROUND BEFORE OR AFTER CONSTRUCTION



Monuments will be set as per sketch, at the stations listed on this plot.

I hereby certify that this Plot is correct to the best of my knowledge and belief.

J. E. Zwick 7-21-58
 DIVISION ENGINEER DATE