

LOCATION PLAN BEL-647-1.38 1958

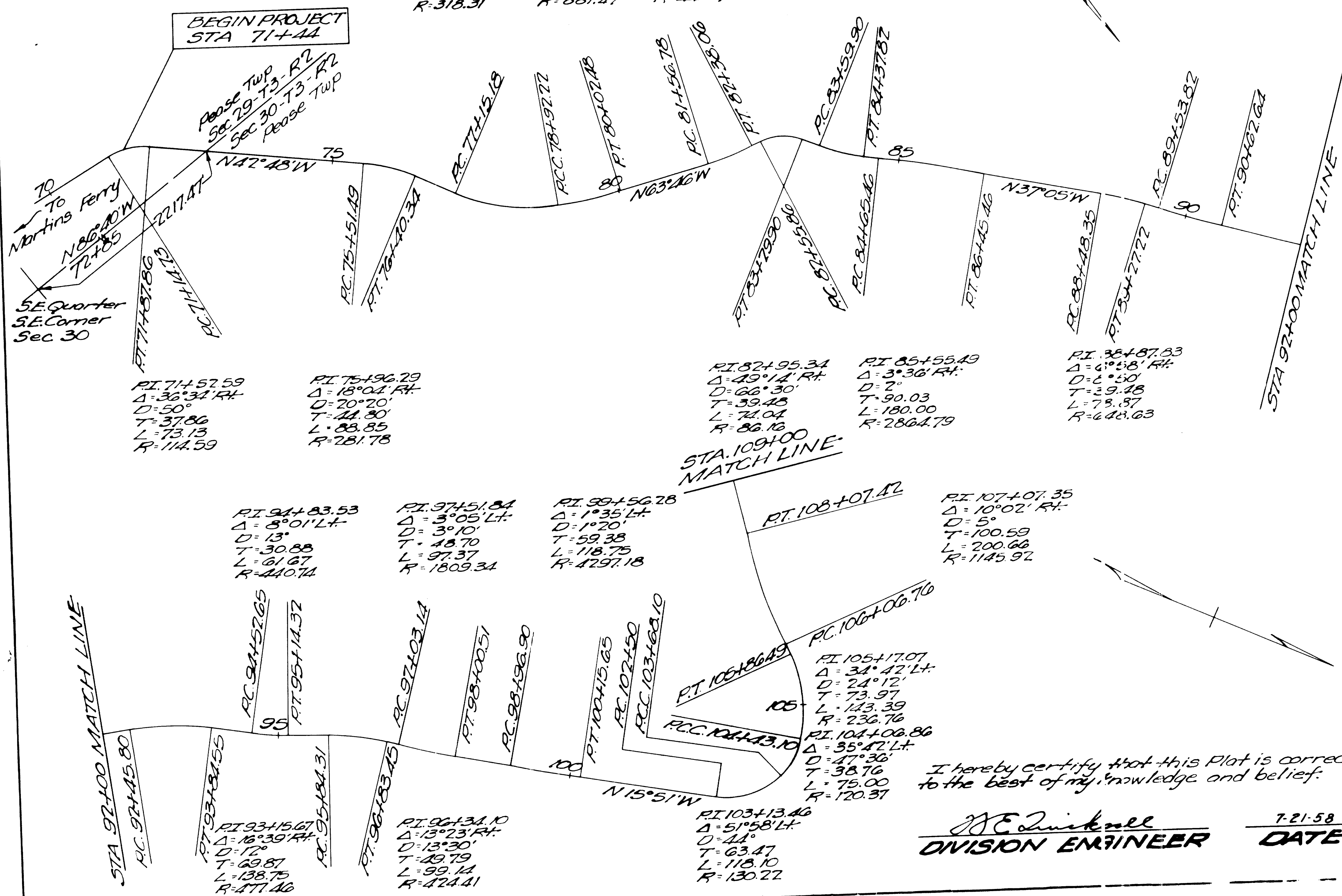
23916
\$23.50 Paid

Received for Record Aug. 4, 1958
at 8:16 O'CLOCK A. M.
RECORDED AUG. 4, 1958
in Belmont County Record of Plats
VOLUME 11 PAGE 72
Nick Munaw RECORDER

SCALE 1" = 100'

PI. 78+06.06 Δ=31°52' Lt. D=18° T=90.87 L=177.04 R=318.31	PI. 79+47.42 Δ=7°10' Lt. D=6°30' T=55.20 L=110.26 R=881.47	PI. 81+97.54 Δ=10°34' Lt. D=13° T=40.76 L=81.28 R=410.74	PI. 83+99.10 Δ=15°35' Lt. D=20° T=39.20 L=77.92 R=286.48
--	---	---	---

PI. 90+08.74
Δ=3°05' Lt.
D=2°50'
T=54.42
L=108.82
R=2022.20



BEGIN PROJECT
STA 71+44

POOSE TWP
Sec 29-73-R2
Sec 30-73-R2
POOSE TWP

To
Martins Ferry
N86°40'W
72+85
SE. Quarter
SE. Corner
Sec 30

PI. 74+52.59
Δ=36°34' Rt.
D=50°
T=37.86
L=73.13
R=114.59

PI. 75+96.29
Δ=18°04' Rt.
D=20°20'
T=44.80
L=83.85
R=281.78

STA. 109+00
MATCH LINE

PI. 82+95.34
Δ=49°14' Rt.
D=66°30'
T=39.48
L=74.04
R=86.16

PI. 85+55.49
Δ=3°36' Rt.
D=2°
T=90.03
L=180.00
R=2864.79

PI. 86+87.83
Δ=6°58' Rt.
D=6°50'
T=29.48
L=73.87
R=648.63

PI. 94+83.53
Δ=8°01' Lt.
D=13°
T=30.88
L=61.67
R=440.74

PI. 97+51.84
Δ=3°05' Lt.
D=3°10'
T=48.70
L=97.37
R=1809.34

PI. 99+56.28
Δ=1°35' Lt.
D=1°20'
T=59.38
L=118.75
R=4297.18

PI. 107+07.35
Δ=10°02' Rt.
D=5°
T=100.59
L=200.66
R=1145.92

PI. 105+86.49
Δ=31°42' Lt.
D=24°12'
T=73.97
L=143.39
R=236.76

PI. 104+06.86
Δ=35°42' Lt.
D=47°36'
T=38.76
L=75.00
R=120.37

PI. 93+15.67
Δ=16°39' Rt.
D=12°
T=69.87
L=138.75
R=477.46

PI. 96+34.10
Δ=13°23' Rt.
D=13°30'
T=49.79
L=99.14
R=424.41

PI. 103+13.46
Δ=51°58' Lt.
D=44°
T=63.47
L=118.10
R=130.22

I hereby certify that this Plat is correct to the best of my knowledge and belief.

J. E. Quirkell
DIVISION ENGINEER

7-21-58
DATE