

DEDICATION:

We, the owners of the lots as designated by the lot numbers appearing before our names hereby Certify that we have directed this plat to be recorded and we hereby Dedicate the Streets as shown hereon for Public use.

- 1-5-7-8-9- -12-6- -21 John J. Carroll Louise C. Carroll
- 2 Joseph C. Kasper Marjorie Kasper
- 3 Thomas Bequa Mary A. Bequa
- 4 Frank X. Daphin Janet Daphin
- 10 Frank Butch Rose Butch
- 13 Carl J. Weisch Gene Weisch
- 14-15 Hubert Williams Deland Williams
- 16-17 Bruney Suptas Mary Suptas
- 18 Robert E. Porter Constance Porter
- 19 John Carroll Willie Carroll
- 20 George F. Steiner John C. Steiner Alice Steiner

PLANNING COMMISSION CERTIFICATE

Approved by the Planning Commission of St. Clairsville, Ohio

This 3rd day of September 1957

John B. Reimer
Chairman

Received for Record this 19 day of SEP 1957 at 2:21 O'clock P.M.

Recorded SEPT 19 1957 in Volume 11 Page 60
Belmont County Record of Plats 18.50 Fee Pd.

Mich. Mansard
Recorder

Transferred this 10 day of SEPT 1957 by the Auditor of Belmont County. \$150 Fee

Edmund Bellon
Deputy Auditor

Accepted by the Commissioners of Belmont County, Ohio This 4th day of SEPT 1957

John C. Fink
Chairman
James R. Cook
Clerk

CERTIFICATE OF ENGINEER

I, the undersign, hereby Certify that the Sub-division known as **WOODLAND TERRACE** was staked by me as represented by this Plat and that the monuments shown hereon are in place.

Sioux H. Jaeger
ENGINEER
Certificate No. 325

WITNESS:
Arch. S. Fogle
Heidi M. Fogle

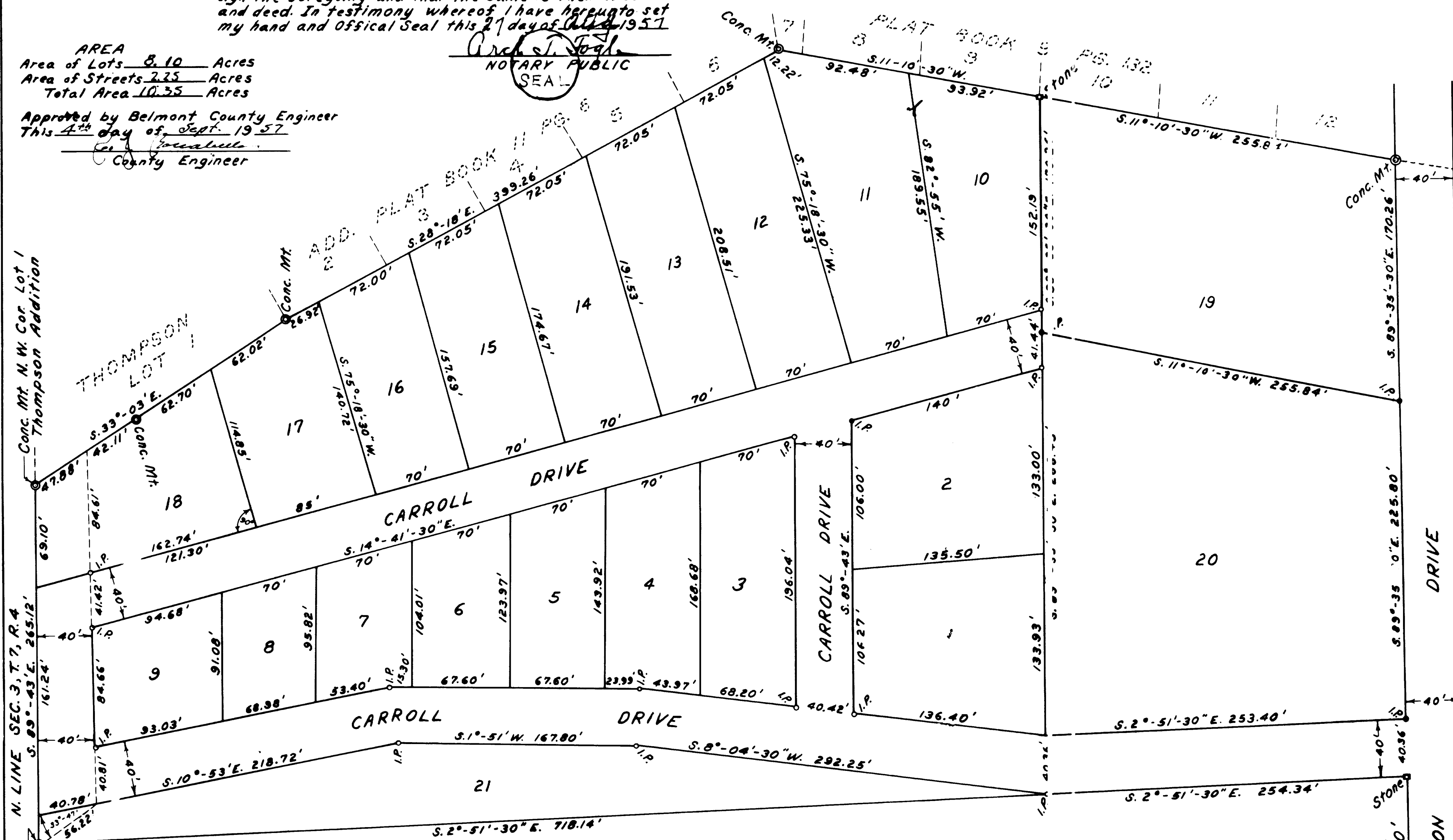
STATE OF OHIO
COUNTY OF BELMONT S.S.

Before me a Notary Public personally appeared the above persons and acknowledged that they did sign the foregoing and that the same is their free act and deed. In testimony whereof I have hereunto set my hand and Official Seal this 21 day of Sept 1957

Arch. S. Fogle
NOTARY PUBLIC
SEAL

AREA
Area of Lots 8.10 Acres
Area of Streets 2.25 Acres
Total Area 10.35 Acres

Approved by Belmont County Engineer
This 4th day of Sept 1957
Carl J. Weisch
County Engineer



**PLAT OF
WOODLAND TERRACE
RICHLAND TWP. SEC. 3, T. 7, R. 4**

SCALE IN FEET

