

DEDICATION

We, the undersigned, being all the owners of the real estate represented by this Plat, hereby dedicate to the Village of St. Clairsville, Ohio, for street purposes, all the streets shown hereon. In witness whereof we set our hands this 24th day of December 1955

WITNESS:
Jim McFarlane
John D. Carter

STATE OF OHIO } 55.
BELMONT CO. }
Signed and acknowledged before me,
Notary Public, December 1955

John D. Carter
Notary Public.

ENGINEERS CERTIFICATE

The undersigned, hereby certify that this Plat has been made by me from surveys and that monuments shown hereon are in place and that the bearings as shown are magnetic.

William J. Shriver
Reg. Engr. No. 6253
Reg. Surveyor No. 2604

Approved by the Board of County Commissioners by resolution dated the 11th day of December 1955
John D. Carter
Notary Public of Belmont Co., Comm.

Accepted by the Planning Commission of the Village of St. Clairsville by resolution dated the 24th day of December 1955

John B. Revere
Pres.
Sect.

Accepted by the Council of the Village of St. Clairsville, Ohio, by Ordinance No. 763 adopted on the 24th day of May 1957.

W. H. Warner
Mayor
Clerk.

Property to be taken into St. Clairsville Corporation
David A. Pugh - 0.421 Acres.
Nick Stranges - 4.332
Total Area - 4.753

Filed with Village Clerk
Dec. 20, 1955
John D. Carter

I or We the undersigned hereby certify that I am the Owner of the lot or lots represented by this Plat and that I have directed the same to be made and I hereby submit this Plat for Record.

WITNESS
John D. Carter
John D. Carter
LOT 9
LOT 10
LOT 11

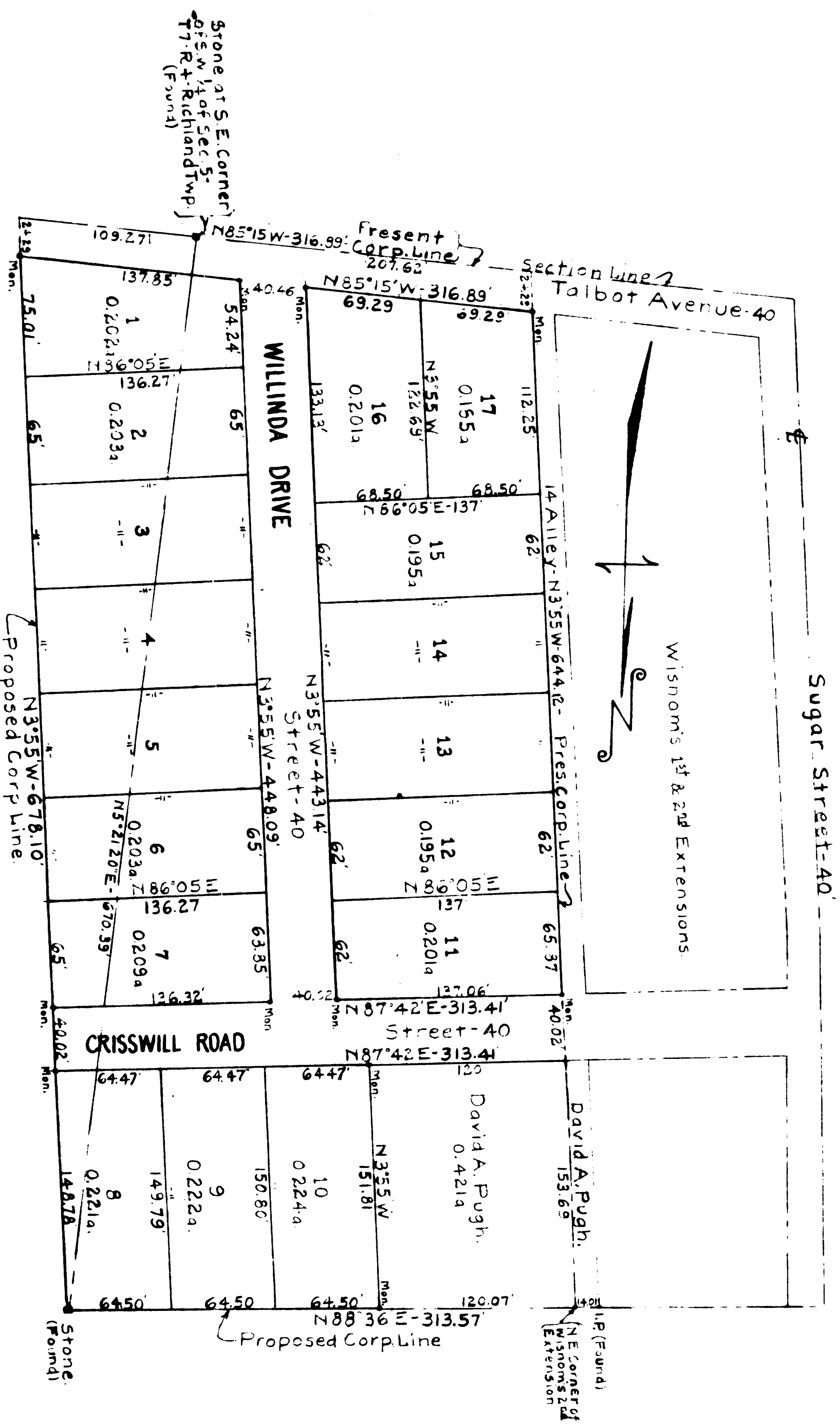
TAX MAP TRANSFER
OK BY *John D. Carter*
COUNTY ENR.
R. J. BOCCABELLA

Received for Record June 14, 1957
At 11:45 o'clock A.M.
Recorded JUNE 14, 1957
In Belmont County Record of PLATS
Volume 11 Page 58
John D. Carter
RECORDER

TRANSFERRED
MAY 27 1957
W. T. McCort, Auditor
William J. Shriver
Reg. Engr. No. 6253 Ohio
W. S. Shriver - Reg. Prof. Engr. No. 6253 Ohio

4850 PAID

MORNINGSIDE ADDITION TO VILLAGE OF ST. CLAIRSVILLE BELMONT CO. OHIO SCALE - 1"=50' DATE - 10/8/55 Total Area = 4.332a - Lots = 3.460a - Sts = 0.872a



FOR CORDINANCE No. 91-201
SEE VOL. 113 P. 114 DEED RECORDS.