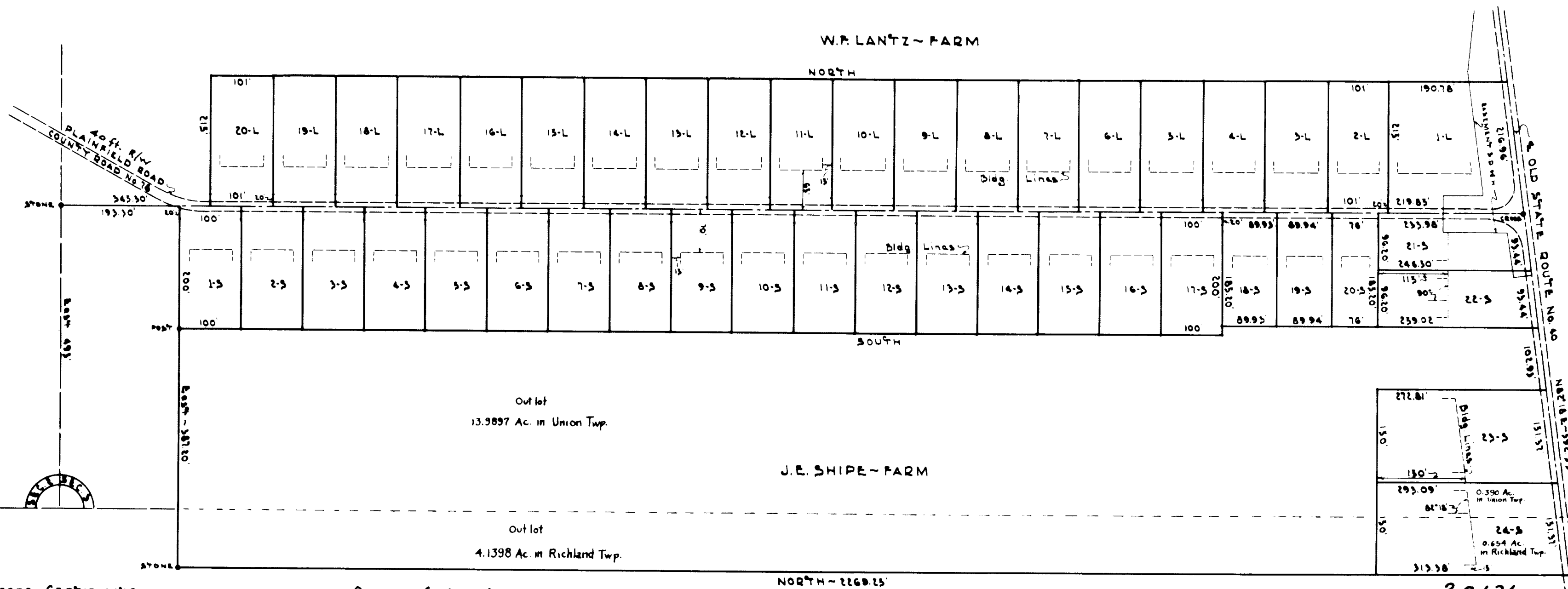


PLAINFIELD DRIVE ADDITION

UNION TOWNSHIP

W.F. LANTZ - FARM

NORTH



J.E. SHIPE - FARM

NORTH - 2269.25'

RICHLAND TOWNSHIP

TRANSFERRED
JAN 24 1957
W. T. McINTOSH, Auditor
R. A. ... Deputy
FEE \$0.10

20136
Received for Record AUGUST 6 1956
At 10:27 A.M. A.M.
RECORDED SEPTEMBER 12 1956
In Belmont County Record of PLATS
Volume 11 PAGE 56
RECORDED

ENGINEER'S CERTIFICATE
I hereby certify that this Map is correct & that the measurements indicated are from actual survey and the corners are marked as shown.
W.R. ...
Engineer

OWNER'S CERTIFICATE
I the undersigned hereby certify that I am the Owner of the Property Represented by this Plat and that I have Directed the same to be made and I hereby submit this Plat for Record subject for Approval by the Belmont County Commissioners.
John ...
Owners

COMMISSIONER'S CERTIFICATE
This Plat Approved by the Commissioners of Belmont County this 15th Day of June 1956.
Walter ...
County Commissioners
Clerk Comm. 6/15/56

Acknowledged before me this 15th Day of June 1956.
Walter ...
Notary Public
Notary Number 73-87

I the undersigned hereby certify that I am the Owner of the Lot or Lots Represented by this Plat and that I have Directed the same to be made and I hereby submit this Plat for Record.
John ...
Lots 1-9
John ...
Lots 10-15
John ...
Lots 16-24

Lot Acreage

Lot 1-L to 10-L	0.50 AC.	0.50 AC.
Lot 11-L	1.015 AC.	1.015 AC.
Lot 11-S to 12-S	0.459 AC.	0.459 AC.
Lot 13-S to 14-S	0.382 AC.	0.764 AC.
Lot 15-S	0.323 AC.	0.323 AC.
Lot 16-S	0.531 AC.	0.531 AC.
Lot 17-S	0.558 AC.	0.558 AC.
Lot 18-S	0.974 AC.	0.974 AC.
Lot 19-S	1.044 AC.	1.044 AC.
Total	22.510	Acres in Lots

TRANSFERRED
AUG 11 1956
W. T. McIntosh, Auditor
R. A. ... Deputy
FEE \$1.50

MAP OF
LOTS OWNED BY J.E. SHIPE & W.F. LANTZ
ADJOINING THE PLAINFIELD ROAD
IN
BELMONT COUNTY
Scale 1/2 inch = 100 Feet
May 12, 1956

LOTS SQUARE EXCEPT AS SHOWN ON MAP.
BUILDING LINES 15 FT. N & S & 70 FT. E & W - SHIPE FARM EXCEPT LOTS 21-S, 22-S, 23-S & 24-S
BUILDING LINES 15 FT. N & S & 65 FT. E & W - LANTZ FARM
COUNTY ROAD NO. 78 RIGHT OF WAY 40 FEET