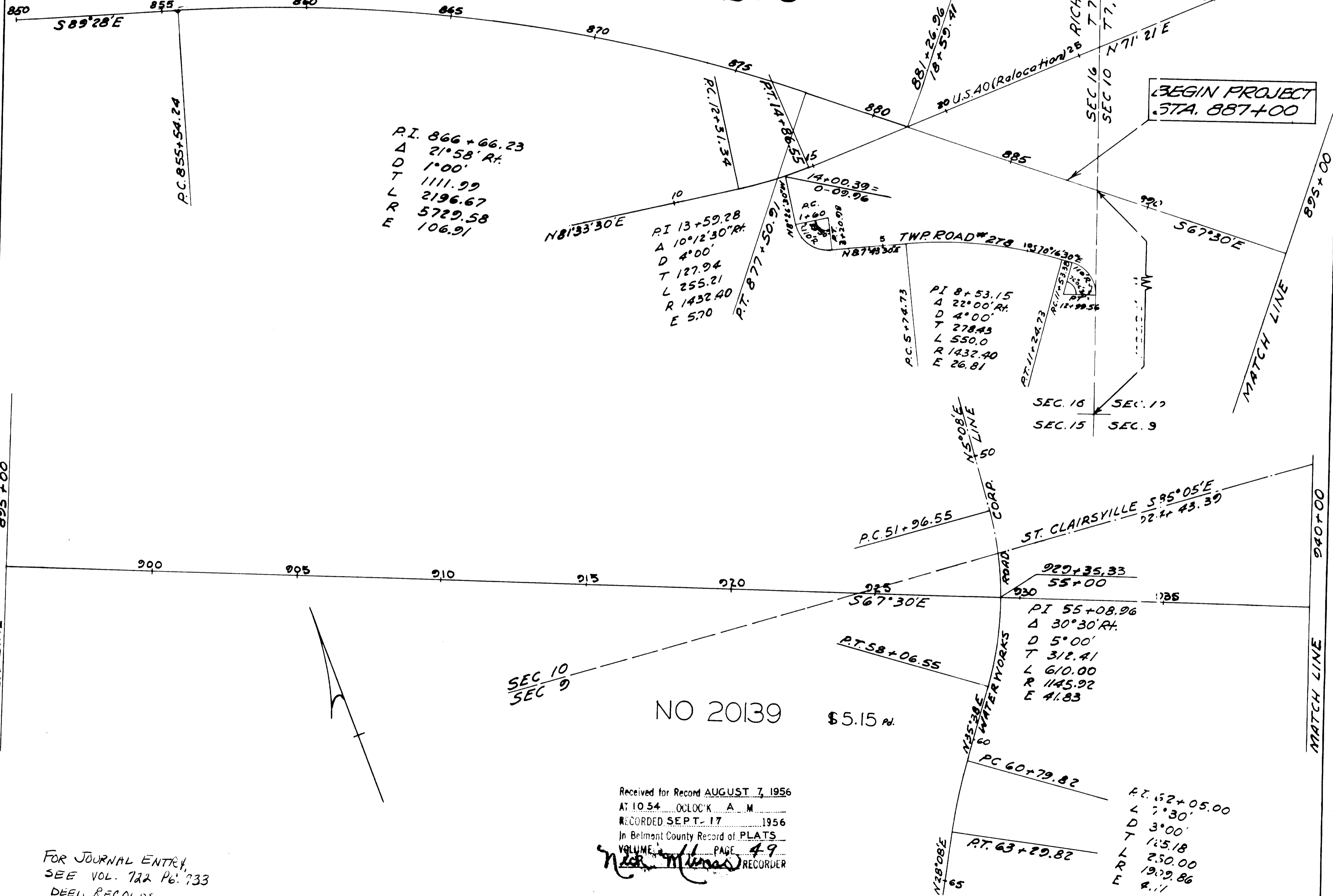


# LOCATION PLAN BEL-40-16.80 1956 Scale 1"=200'



NO 20139 \$5.15 PD.

Received for Record AUGUST 7, 1956  
 AT 10 54 O'CLOCK A.M.  
 RECORDED SEPT. 17 1956  
 In Belmont County Record of PLATS  
 VOLUME PAGE 49  
*John Thomas* RECORDER

FOR JOURNAL ENTRY,  
 SEE VOL. 722 Pg. 733  
 DEED RECORDS.

I hereby certify that this Plat is correct to the  
 best of my knowledge and belief.  
*Dean R. [Signature]*  
 DIVISION ENGINEER Date 8/2/56