

NO. 20136

\$ 12.75 pd.

PLAINFIELD DRIVE ADDITION

UNION TOWNSHIP

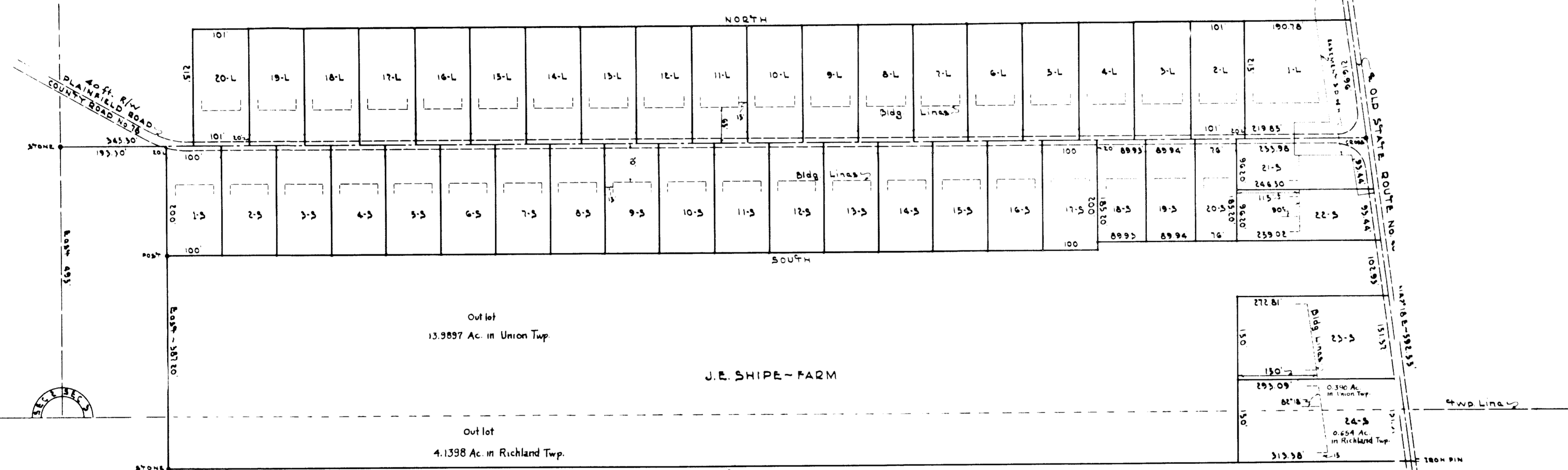
W.F. LANTZ - FARM

NORTH

SOUTH

J.E. SHIPE - FARM

NORTH - 2269.25'



**ENGINEERS CERTIFICATE**  
I hereby certify that this Map is correct & that the Measurements Indicated are from Actual Survey and the Corners are marked as shown.  
*W.R. Herbert*  
Engineer

**OWNERS CERTIFICATE**  
I the undersigned hereby certify that I am the Owner of the Property Represented by this Plat and that I have Directed the same to be made and I hereby submit this Plat for Record subject for Approval by the Belmont County Commissioners.  
*John Lantz*  
Owner's

**COMMISSIONER'S CERTIFICATE**  
This Plat Approved by the Commissioners of Belmont County this 19th Day of June 1956.  
*W. H. Keast*  
County Commissioners  
Clerk Comm. 6/19/56

Acknowledged Debona me a *Mary Dulis*  
this 11th Day of June 1956  
Majlona Niemiec  
MILITARY PUBLIC  
M. Comm. in Excess 7-3 57

I the undersigned hereby certify that I am the Owner of the Lot or Lots Represented by this Plat and that I have Directed the same to be made and I hereby submit this Plat for Record.  
Lots #6 *John Mistovich*  
9-10 *John Mistovich*  
Lots #4 *Anna B. Kompiński*  
7+8 *Carlina Kompiński*  
Lots #1 *Jones Pruitt*  
15 *Wilbur Pruitt*

Lot Acraaga

Lot 2-L & 20-L	0.50 AC.	9.50 AC.
Lot 1-L	1.015 AC.	1.015 AC.
Lot 11-S-17-S	0.489 AC.	7.803 AC.
Lot 18-S & 19-S	0.382 AC.	0.764 AC.
Lot 20-S	0.323 AC.	0.323 AC.
Lot 21-S	0.531 AC.	0.531 AC.
Lot 22-S	0.558 AC.	0.558 AC.
Lot 23-S	0.974 AC.	0.974 AC.
Lot 24-S	1.044 AC.	1.044 AC.
Total =		22.510 Acres in Lots.

Transferred on Tax Map  
*C. J. ...*  
R. J. Doccaballa County Engineer  
(6-20-56)

Received for Record AUGUST 6 1956  
10 37 A.M.  
SEPTEMBER 17 1956  
In Bel. County Record of PLATS  
*Nick Milnes* RECORDER

**TRANSFERRED**  
W. T. Moore, Author  
*E. ...* DRAFT  
FEE \$ 1.50 1/2

LOTS OWNED BY J.E. SHIPE & W.F. LANTZ  
ADJOINING THE PLAINFIELD ROAD  
IN  
BELMONT COUNTY  
Scale 1/2 inch = 100 feet  
May 12, 1956

*Re-recorded - See page 56 - this book.*