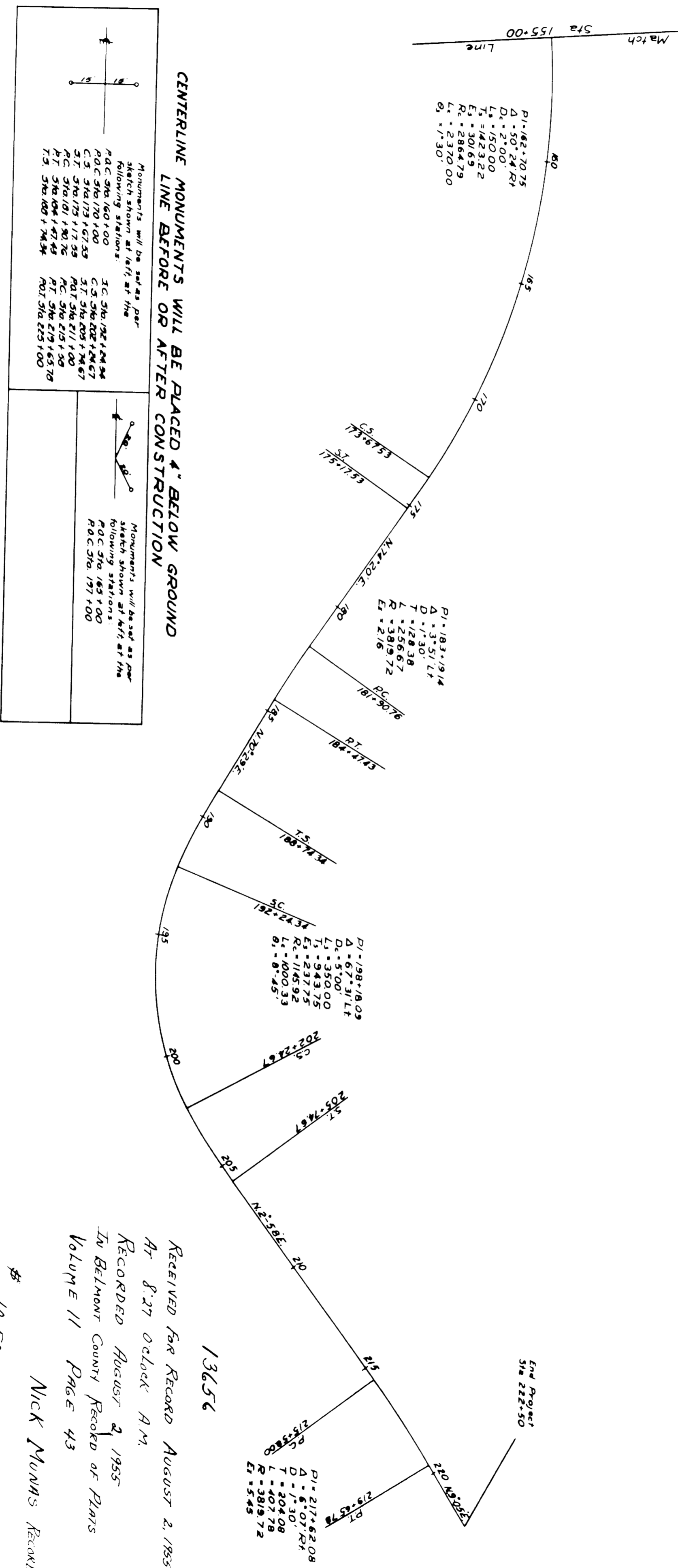


# LOCATION PLAN BEL - 8 - (10.97-13.67) 1955

SCALE 1"=200'

SHEET 6 OF 6 SHEETS



**CENTERLINE MONUMENTS WILL BE PLACED 4" BELOW GROUND  
LINE BEFORE OR AFTER CONSTRUCTION**

Monuments will be set as per sketch shown at left of the following stations: P.O.C. 576+160+00 P.T. 576+173+07.33 P.C. 576+181+80.33 P.T. 576+188+74.34 P.O.C. 576+190+00 P.T. 576+193+07.33 P.C. 576+197+100 P.T. 576+204+74.34 P.O.C. 576+206+00 P.T. 576+211+00 P.C. 576+217+00 P.T. 576+223+00		Monuments will be set as per sketch shown at left of the following stations: P.O.C. 576+160+00 P.T. 576+173+07.33 P.C. 576+181+80.33 P.T. 576+188+74.34 P.O.C. 576+190+00 P.T. 576+193+07.33 P.C. 576+197+100 P.T. 576+204+74.34 P.O.C. 576+206+00 P.T. 576+211+00 P.C. 576+217+00 P.T. 576+223+00	
--	--	--	--

Received for Record August 2, 1955  
 At 8:27 o'clock A.M.  
 RECORDED August 2, 1955  
 In Belmont County Record of Plans  
 Volume 11 Page 43  
 NICK MUNNIS Recorder  
 \$ 10.50 paid

I hereby certify that this plat is correct  
 to the best of my knowledge and belief  
 Division Engineer  
 DATE

13656

End Project  
Sta 222+50