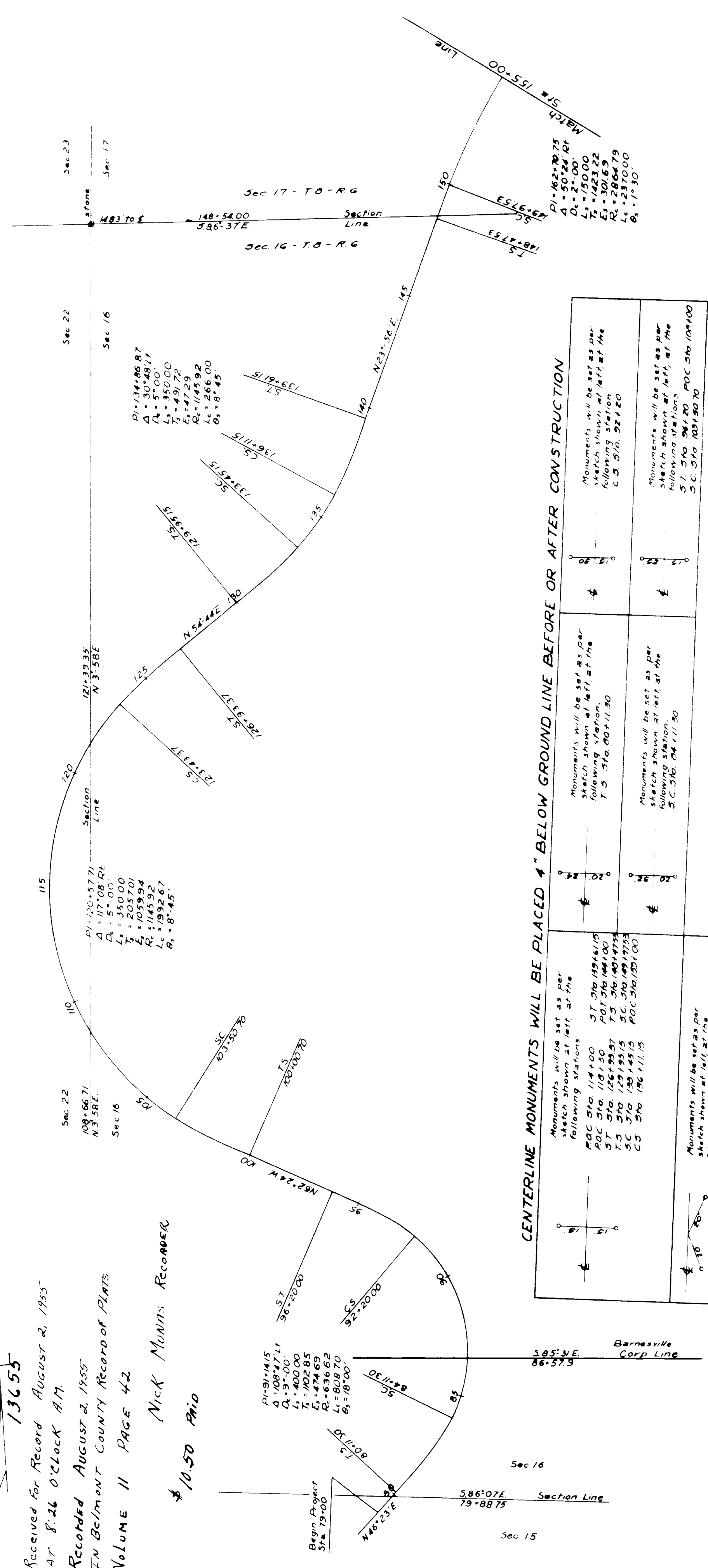


LOCATION PLAN BEL - 8 - (10.97-13.67) 1955 SCALE 1" = 200'

Sheet 1 of 2 sheets

13655
Received for Record August 2, 1955
AT 8:26 O'CLOCK A.M.
Recorded August 2, 1955
IN BELMONT COUNTY RECORD OF PLATS
VOLUME II PAGE 42

Nick Mannis Recorder
\$10.50 Paid



CENTERLINE MONUMENTS WILL BE PLACED 4" BELOW GROUND LINE BEFORE OR AFTER CONSTRUCTION

<p>Monuments will be set as per sketch shown at left at the following stations:</p> <p>POC Sta 114+00 ST Sta 119+61.0 ST Sta 114+00 POJ Sta 141+00 ST Sta 126+99.87 ST Sta 140+75 T.S. Sta 129+93.5 ST Sta 141+75 SC Sta 135+45.5 POC Sta 151+00 CS Sta 136+11.5</p> <p>Monuments will be set as per sketch shown at left at the following stations:</p> <p>T.S. Sta 100+00.70 T.S. Sta 100+49.37 C.S. Sta 129+49.37</p>	<p>Monuments will be set as per sketch shown at left at the following station:</p> <p>T.S. Sta 101+11.30</p>	<p>Monuments will be set as per sketch shown at left at the following stations:</p> <p>T.S. Sta 101+11.30 C.S. Sta 103+90.20</p>
---	--	---

I hereby certify that this plat is correct to the best of my knowledge and belief.

 Date _____
 Division Engineer