

DEDICATION

THE WILLAY CORPORATION, THE OWNER OF THE PROPERTY SHOWN ON THIS PLAT, DOES HEREBY ASSENT TO AND ADOPT THIS PLAT AND DECLARES WAS LAID AT ITS REQUEST. THE STREETS AND ROADS AS SHOWN ON THIS PLAT IT HEREBY DEDICATES FOR PUBLIC USE.

IN WITNESS WHEREOF, SAID THE WILLAY CORPORATION HAS CAUSED THESE INSTRUMENTS TO BE SIGNED BY R.H. WILSON, ITS PRESIDENT AND W.R. MAY, ITS SECRETARY, AND ITS CORPORATE SEAL TO BE HERETO AFFIXED ON THIS 14th DAY OF December A. D. 1954.

SIGNED AND ACKNOWLEDGED IN PRESENCE OF: R.H. Wilson, President; W.R. May, Secretary.

THE STATE OF OHIO, COUNTY OF BELMONT, SS:

BEFORE ME A NOTARY PUBLIC IN AND FOR SAID COUNTY, PERSONALLY APPEARED R.H. WILSON, PRESIDENT AND W.R. MAY, SECRETARY OF THE WILLAY CORPORATION, THE CORPORATION WHICH EXECUTED THE FOREGOING INSTRUMENT, WHO ACKNOWLEDGED THAT THE SEAL AFFIXED TO SAID INSTRUMENT IS THE CORPORATE SEAL OF SAID CORPORATION; THAT THEY DID SIGN AND SEAL SAID INSTRUMENT AS SUCH PRESIDENT AND SECRETARY IN BEHALF OF SAID CORPORATION AND BY AUTHORITY OF ITS BOARD OF DIRECTORS; AND THAT SAID INSTRUMENT IS THEIR FREE ACT AND DEED INDIVIDUALLY AND AS SUCH PRESIDENT AND SECRETARY AND THE FREE AND CORPORATE ACT AND DEED OF THE SAID THE WILLAY CORPORATION.

IN TESTIMONY WHEREOF I HAVE HERETO SUBSCRIBED MY NAME AND AFFIXED MY OFFICIAL SEAL THIS 16th DAY OF December A. D. 1954.

Notary Public for Belmont County, Ohio; William L. Kant, Notary Public, Belmont County, Ohio.

I, L.O. McGLUMPHY, DIRECTOR OF PUBLIC SERVICE OF THE CITY OF MARTINS FERRY, OHIO HEREBY APPROVE THIS PLAT.

L.O. McGlumphy, Director of Public Service, City of Martins Ferry, Ohio.

I, W.S. SHRIVER, CONSULTING ENGINEER FOR THE CITY OF MARTINS FERRY, OHIO, HEREBY APPROVE THIS PLAT THIS 14th DAY OF December A.D. 1954.

W.S. Shriver, Registered Professional Engineer, Ohio - No. 6253.

SURVEYORS CERTIFICATION

THIS PLAT REPRESENTS THE FIRST ADDITION TO ZANE KNOLLS SUBDIVISION TO THE CITY OF MARTINS FERRY, BELMONT COUNTY OHIO, IN SECTION 24, TOWNSHIP 3, RANGE 2, AS SURVEYED AND PLATTED BY ME AT THE REQUEST OF THE WILLAY CORPORATION THE OWNER THEREOF AND CONTAINS 8.650 ACRES, OF WHICH 2.7284 ACRES IS IN LOTS AND 0.9776 ACRES IS IN STREETS AND ROADS. I HEREBY CERTIFY THAT THIS PLAT IS CORRECT AND THAT THE LENGTHS, DIMENSIONS AND BEARINGS OF LOTS, STREETS AND ROADS, AND THE NAMES OF THE STREETS AND ROADS AND THE LOCATION OF MONUMENTS AND IRON PINS ARE AS SHOWN ON THIS PLAT.

W.S. Shriver, Registered Professional Engineer, Ohio - No. 6253.

APPROVED, ACCEPTED AND PASSED BY THE CITY COUNCIL OF MARTINS FERRY, OHIO ON THIS 14th DAY OF Dec. A.D. 1954.

Signed: Mayor, City Council members.

APPROVAL OF PLATTING COMMISSIONERS

WE THE PLATTING COMMISSIONERS OF THE CITY OF MARTINS FERRY, OHIO, DO HEREBY APPROVE THIS PLAT AND ACCEPT THE STREETS AND ROADS DEDICATED TO PUBLIC USE AS SHOWN HEREOF.

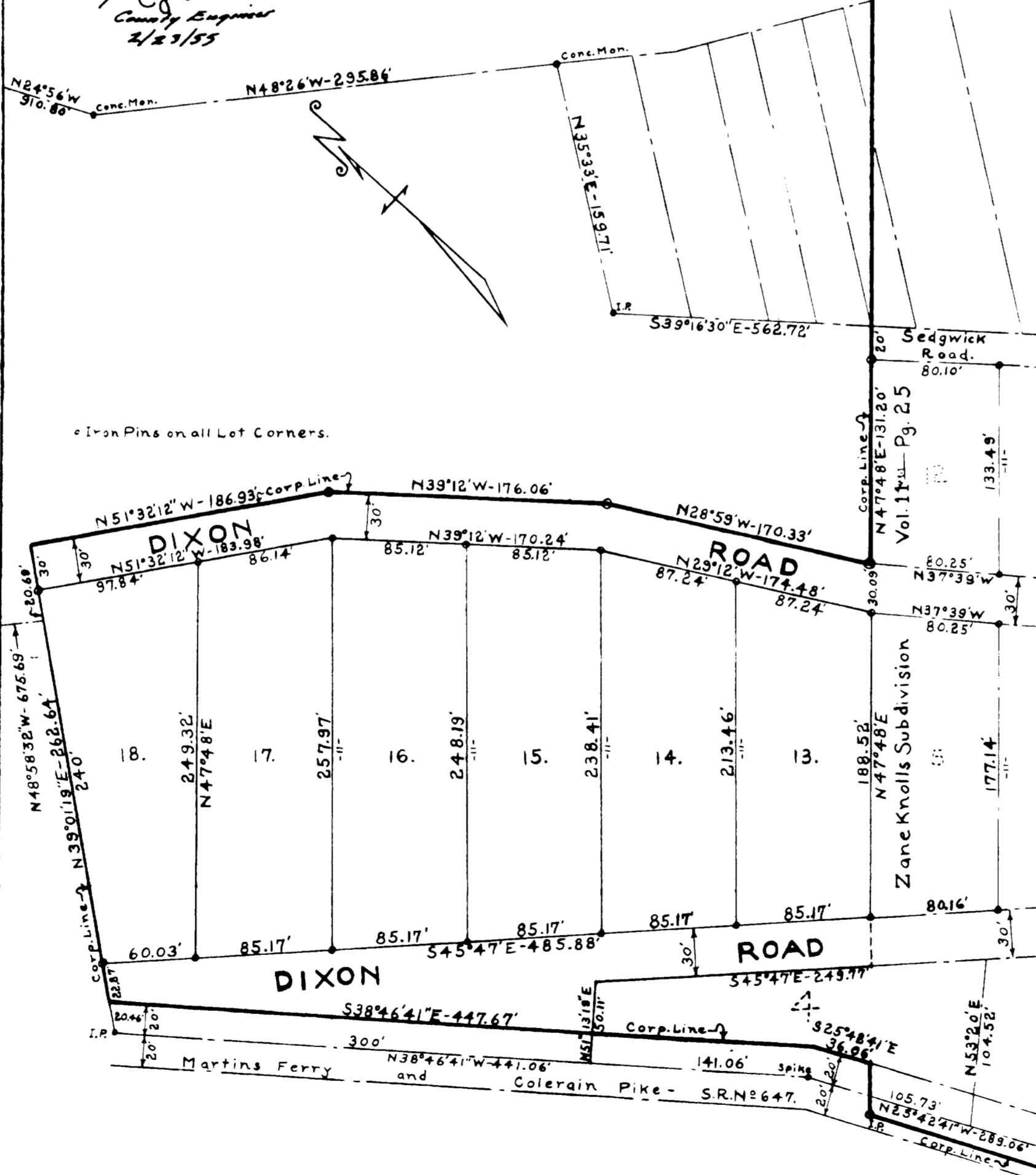
Charles J. Miller, James A. Baker, etc. City of Martins Ferry Council.

RECEIVED FOR RECORDING MAP 28, 1955 at 1:03 PM. RECORDED IN VOLUME 11, PAGE 40, BELMONT COUNTY RECORDS OF PLATS.

Signed: Nick Minns, Recorder of Belmont County.

Tax Map Transfer by E. Conant, County Engineer, 2/23/55.

\$1250 PAID



FIRST ADDITION TO ZANE KNOLLS SUBDIVISION TO THE CITY OF MARTINS FERRY, OHIO.

SCALE - 1"=50' DATE - Jan 20 - 1954 Section 24 - Twp 3 - Range 2 - Pease Township - Belmont County - Ohio - W.S. SHRIVER - Registered Prof. Eng. No. 6253.

CAB C - SLIDE 41