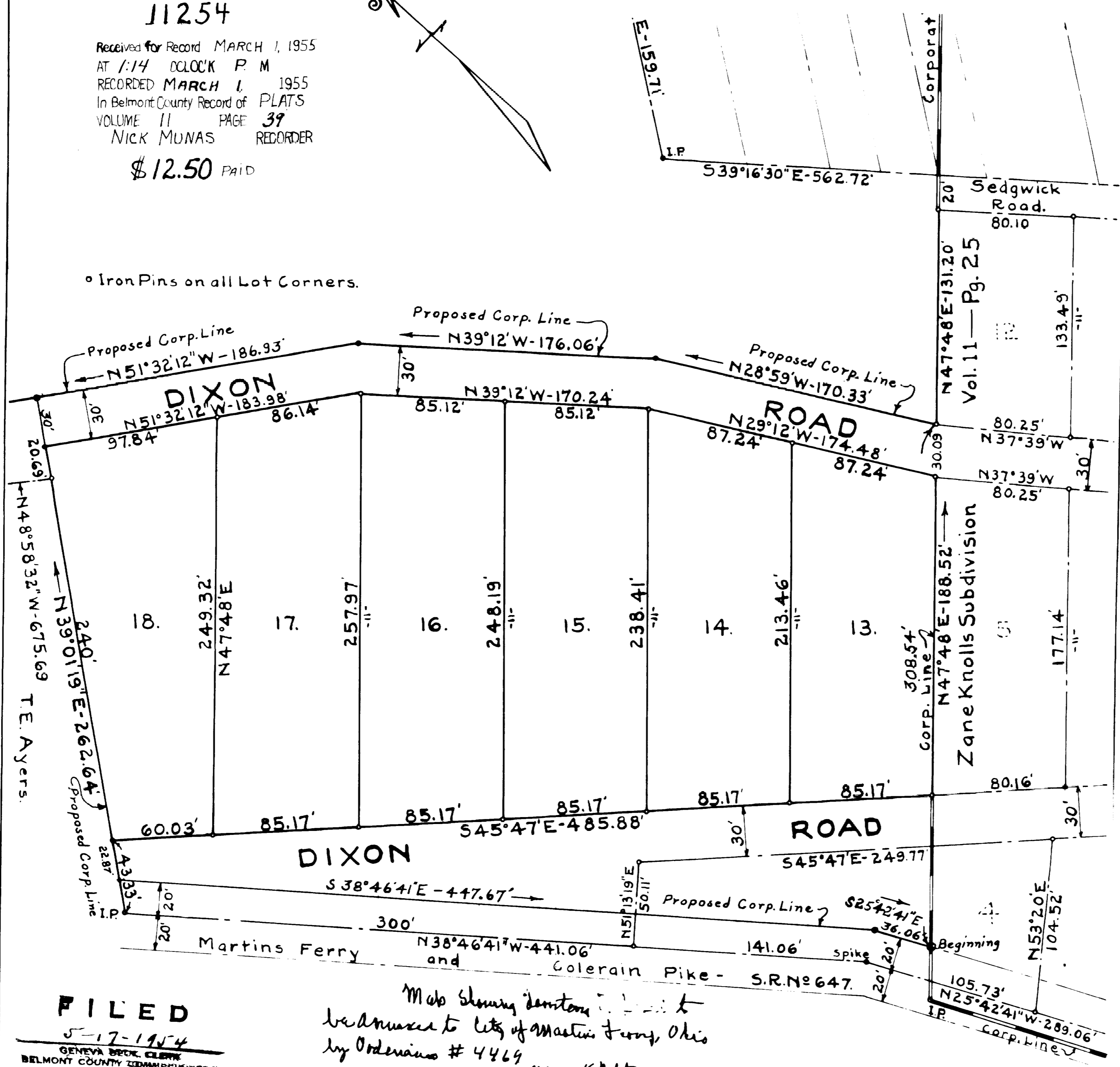


N24°56'W 910.80' Conc. Mon. N48°26'W-295.86'

11254

Received for Record MARCH 1, 1955
 AT 1:14 O'CLOCK P. M.
 RECORDED MARCH 1, 1955
 In Belmont County Record of PLATS
 VOLUME 11 PAGE 39
 NICK MUNAS RECORDER
 \$12.50 PAID

o Iron Pins on all Lot Corners.



FILED
 5-17-1954
 GENEVA BRICK CLERK
 BELMONT COUNTY ADMINISTRATION

Map showing boundaries to be annexed to City of Martins Ferry, Ohio by Ordinance # 4469

FIRST ADDITION
 TO
ZANE KNOLLS SUBDIVISION
 TO THE
CITY OF MARTINS FERRY, OHIO.

SCALE - 1" = 50' DATE - Jan. 20 - 1954
 Section 24 - Twp. 3 - Range 2 - Pease Township.
 Belmont County, Ohio.
 W.S. SHRIVER - Registered Prof. Engr. No. 6253.

CAB. C - SLIDE - 40

PAGE 1.