

Engineers Certificate

I hereby certify that this Map is Correct and that the Measurements Indicated are from Actual Survey and that Iron Pins are Planted on the Corners.

Engineer W.R. [Signature]

Owners Certificate

I the undersigned hereby certify that I am the Owner of the property represented by this Plat and that I have directed the same to be made and I hereby Submit this Plat for Record Subject for Approval by the Belmont County Commissioners.

Owner's William S. McCaughey  
[Signature]

Acknowledged before me on September 10, 1954

This 15th Day of September 1954  
My Commission expires January 10, 1957

Commissioners Certificate

This Plat Approved by the Commissioners of Belmont County this 7th day of Sept. 1954

[Signature]  
County Commissioners  
Clark of Comm.

9440

Received for Record OCT. 1, 1954  
At 11:50 o'clock A.M.

RECORDED OCT. 1, 1954  
In Belmont County Record of PLATS  
VOLUME 11 PAGE 34

Nick Munn, Recorder.

\$ 5.75 Fee

MAP

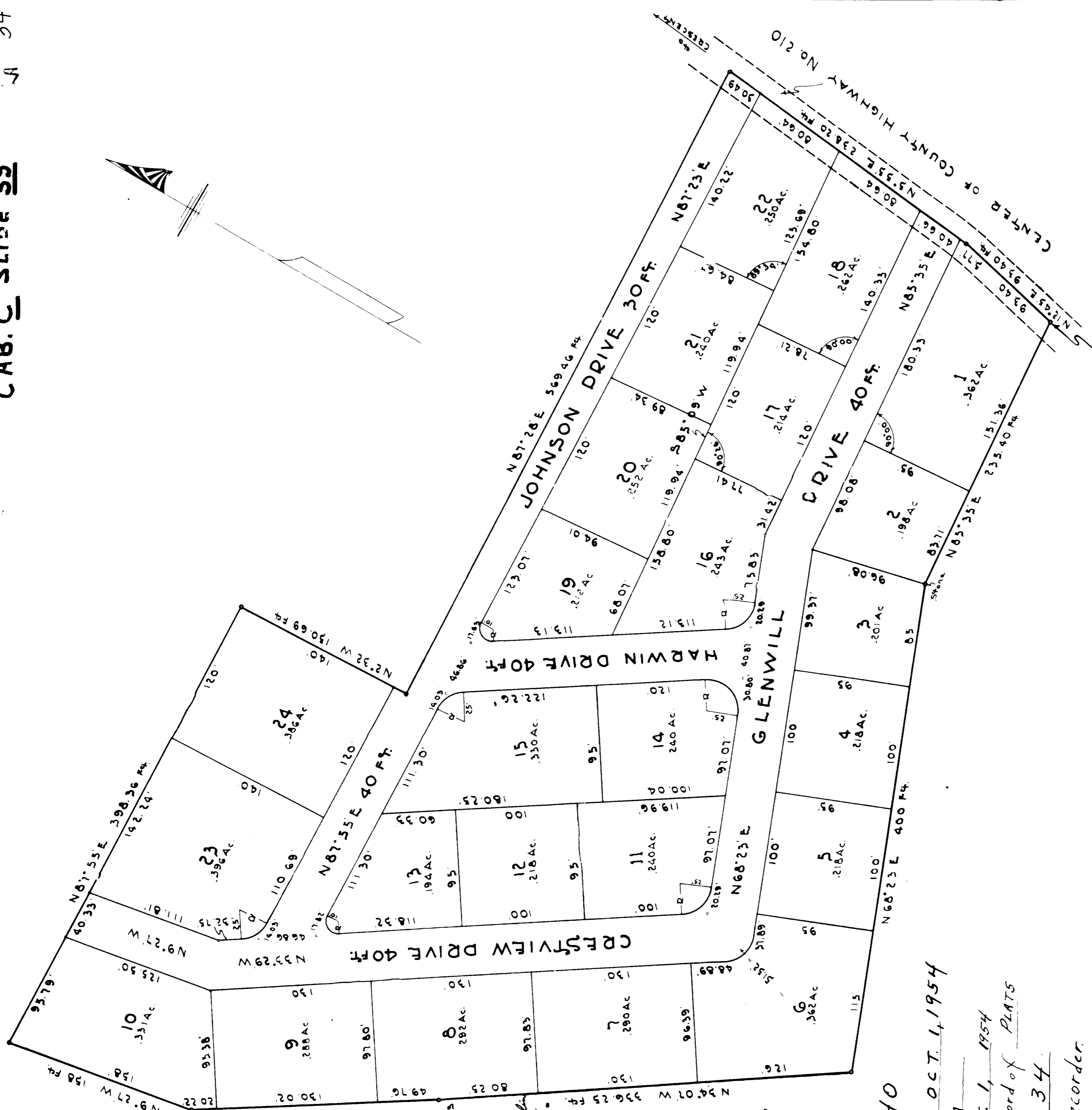
ORCHARD TERRACE

LOCATED IN RICHLAND TOWNSHIP BELMONT COUNTY  
SECTION No 5 TOWNSHIP No 7 & RANGE No 4

SCALE 1" = 50'

AUGUST 28, 1954

TRANSFERRED  
SEPT 4 1954  
W. T. McCort, Auditor  
[Signature], Deputy  
TRANSFERRED ON TAX MAP  
By C.R.M.  
R. J. Boccabella  
County Engineer



N 5° 55' E 635.13 ft & S 01° 26' E 402.74 ft  
From the Center of Section No. 5  
Twp. No. 7 & Rg. No. 4.