

LOCATION PLAN OF ACCESS ROAD

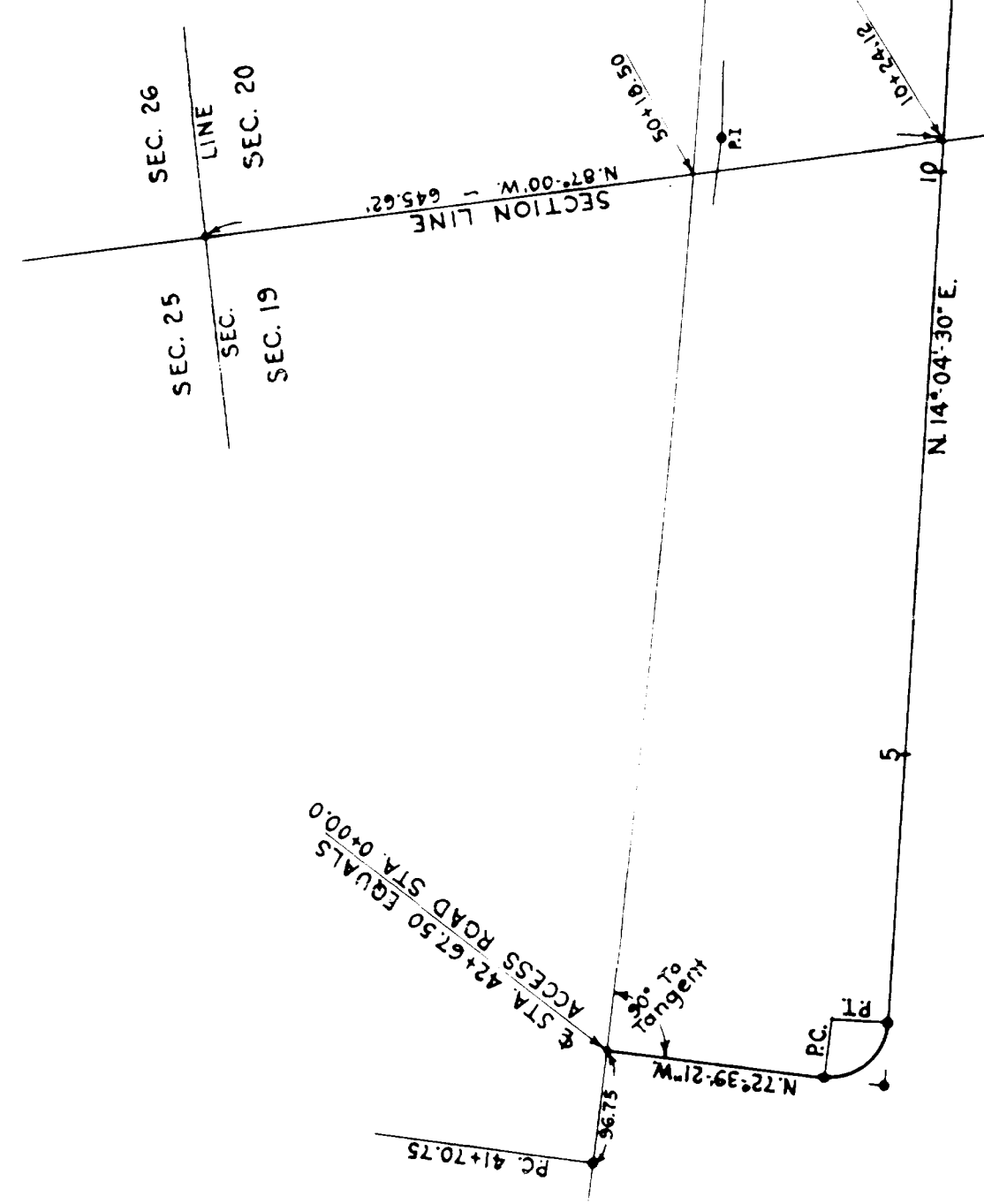
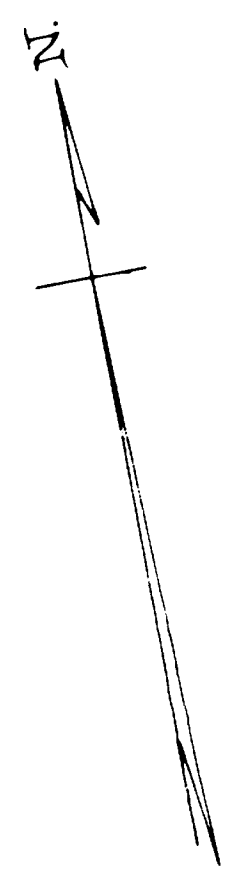
TO
BEL-7-(17.67-20.14)
(RECORDED IN VOL. II - PG. 22 - A.D. 1953)

1954

SCALE - 1" = 100'

STATE	PROJECT	TYPE
OHIO		PLAT
2		PLAND

BEL-7-(17.67-20.14)



NOTE :-
Station 42+67.50 and Station 73+32.10 are the same stations as shown on "Location Plan" recorded in Vol. II, Pg. 22 of Plat Records of Belmont County in 1953.

A = 93°16'09"LT.
R = 90.00'
T = 32.34'
E = 22.87'
P.C. = 1+89.23
P.T. = 2+70.63

NOTE :-
All bearings on Access Road have been co-ordinated with centerline of highway bearings on Location Plan of Bel-7-(17.67-20.14) heretofore referred to.

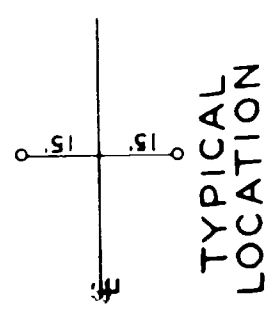
A = 87°32' RT.
R = 50.00'
T = 70.93'
E = 19.24'
P.R.C. = 32+71.37
P.T. = 33+47.76

A = 17°39'30" LT.
R = 07.40'
T = 8594.37'
E = 953.26'
L = 1898.75'
E = 52.70'
P.C. = 13+72.62
P.R.C. = 32+71.37

A = 98°27' LT.
R = 90.00'
T = 37.98'
E = 65.92'
L = 26.56'
P.C. = 33+84.03
P.T. = 34+70.01

Monuments shall be set (as shown by Typical Location) at the following stations either during or after construction.

- STA. 1+89.23
- STA. 2+70.63
- STA. 13+72.62
- STA. 23+00.0
- STA. 32+71.37
- STA. 33+47.76
- STA. 33+84.03
- STA. 34+70.01



TYPICAL
LOCATION

6206

Received for Record MAR 10, 1954
AT 9:34 O'CLOCK A.M.
Recorded MAR. 10, 1954
In Belmont County Record of Plats
VOLUME II - PAGE 28.
Rick Munnas, Recorder.
#10.75

I hereby certify that this Plat is correct to the best of my knowledge and belief.

DATE: 2-2-54
DIVISION ENGINEER