

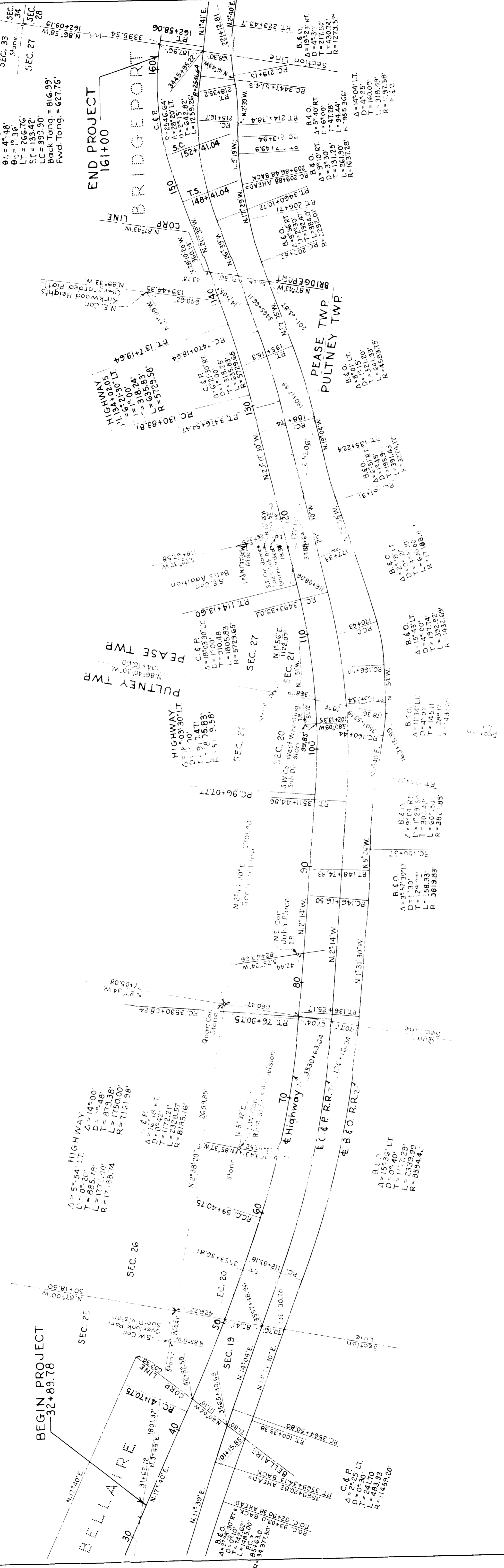
SECTION	DATE	PROJECT
2	CHC	BEL-7-(17.67-20.14)

LOCATION PLAN BEL-7-(17.67-20.14) 1953

SCALE - 1"=400' Longitudinally
Not to Scale Horizontally

4201
#34-50 PAID
checked for Record OCT 8 - 1953
AT 2:57 P.M. O.C.K. P.M.
RECORDED Oct. 22, 1953
in Belmont County Record of
PLATS, VOLUME 11, PAGE 22
L. C. HARRIS, RECORDER

HIGHWAY
PI 156+58.03
A = 29°12'30" RT.
D = 228.24'
PC = 235.33'
PT = 44.0'
PVI = 18.46'
L = 236.76'
ST = 138.42'
LC = 393.30'
Back Sog. = 816.99'
Pw'd Tang. = 627.75'



NOTE: This plat is a revision of and supercedes the Location Plan of Bel-7 (17.67-20.14) dated 1952 and recorded August 5, 1952, in Volume 11, Page 12, of the Plat Records of Belmont County.

I, Dean P. Leaver, hereby certify that this Plat is correct to the best of my knowledge and belief.
 DEAN P. LEAVER
 DIVISION ENGINEER
 10-5-53
 DATE

Monuments shall be set on centerline at the following stations either during or after construction.

- STA. 32+89.78
- STA. 41+70.75
- STA. 47+00
- STA. 53+00
- STA. 59+40.15
- STA. 64+00
- STA. 70+00
- STA. 76+90.75
- STA. 86+00
- STA. 96+07.77
- STA. 102+00
- STA. 108+00
- STA. 114+13.60
- STA. 122+00
- STA. 130+83.81
- STA. 137+15.27
- STA. 143+00
- STA. 148+41.04
- STA. 152+41.04
- STA. 156+00
- STA. 162+58.00