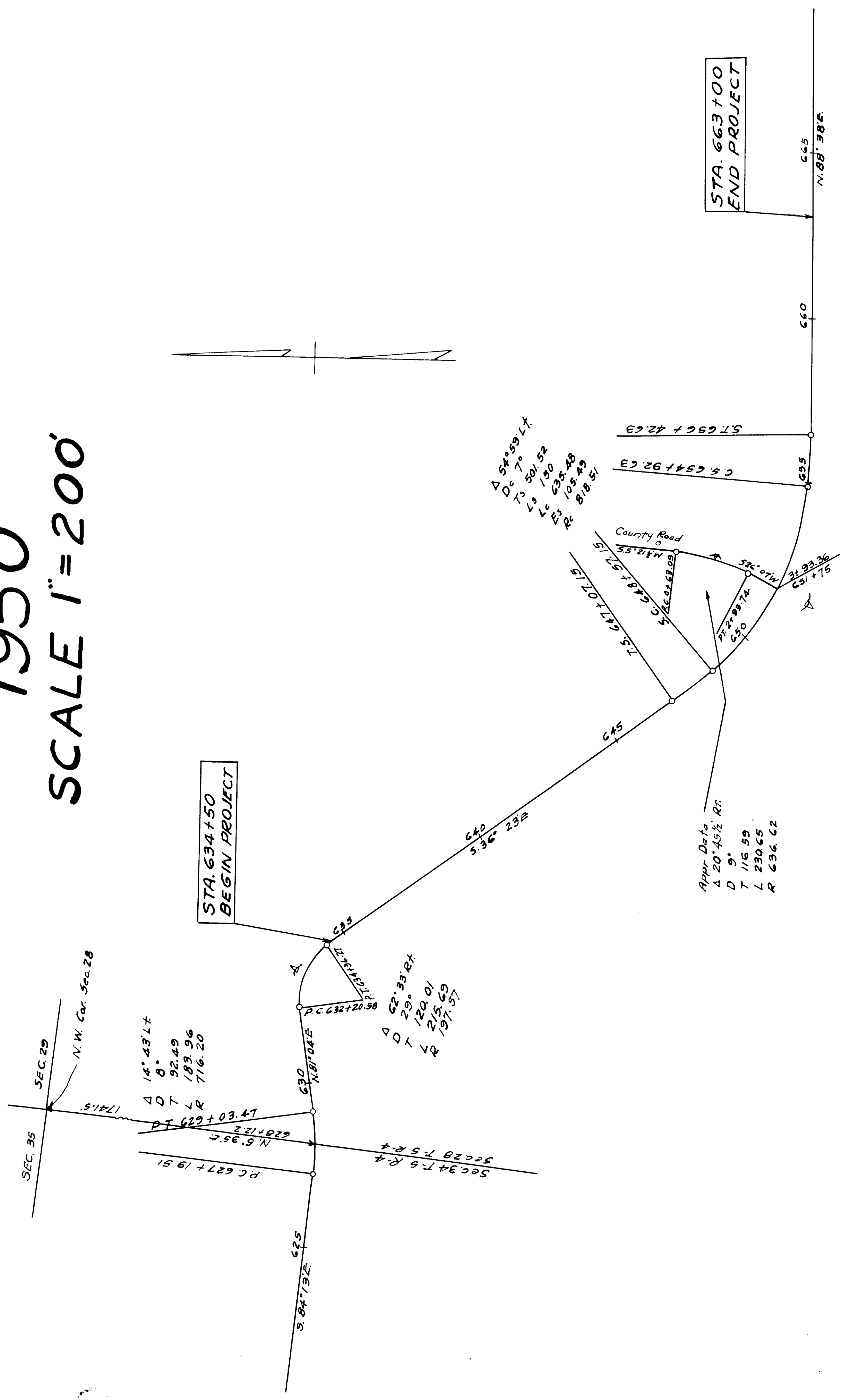


# LOCATION PLAN

## BEL-148-(12.02-12.22)

### 1950

### SCALE 1"=200'



52026

RECEIVED FOR RECORD - OCT. 21, 1950 AT 9:53 O'CLOCK A.M.  
 RECORDED... 1950...  
 IN BELMONT COUNTY RECORDED RECORD OF PLATS - VOL. 11 PAGES  
 1925  
 I HEREBY CERTIFY THAT THIS PLAT IS CORRECT TO THE BEST  
 OF MY KNOWLEDGE AND BELIEF

SIGNED: DAWSON W. SMITH - DIVISION ENGINEER  
 DATE: 10-20-50