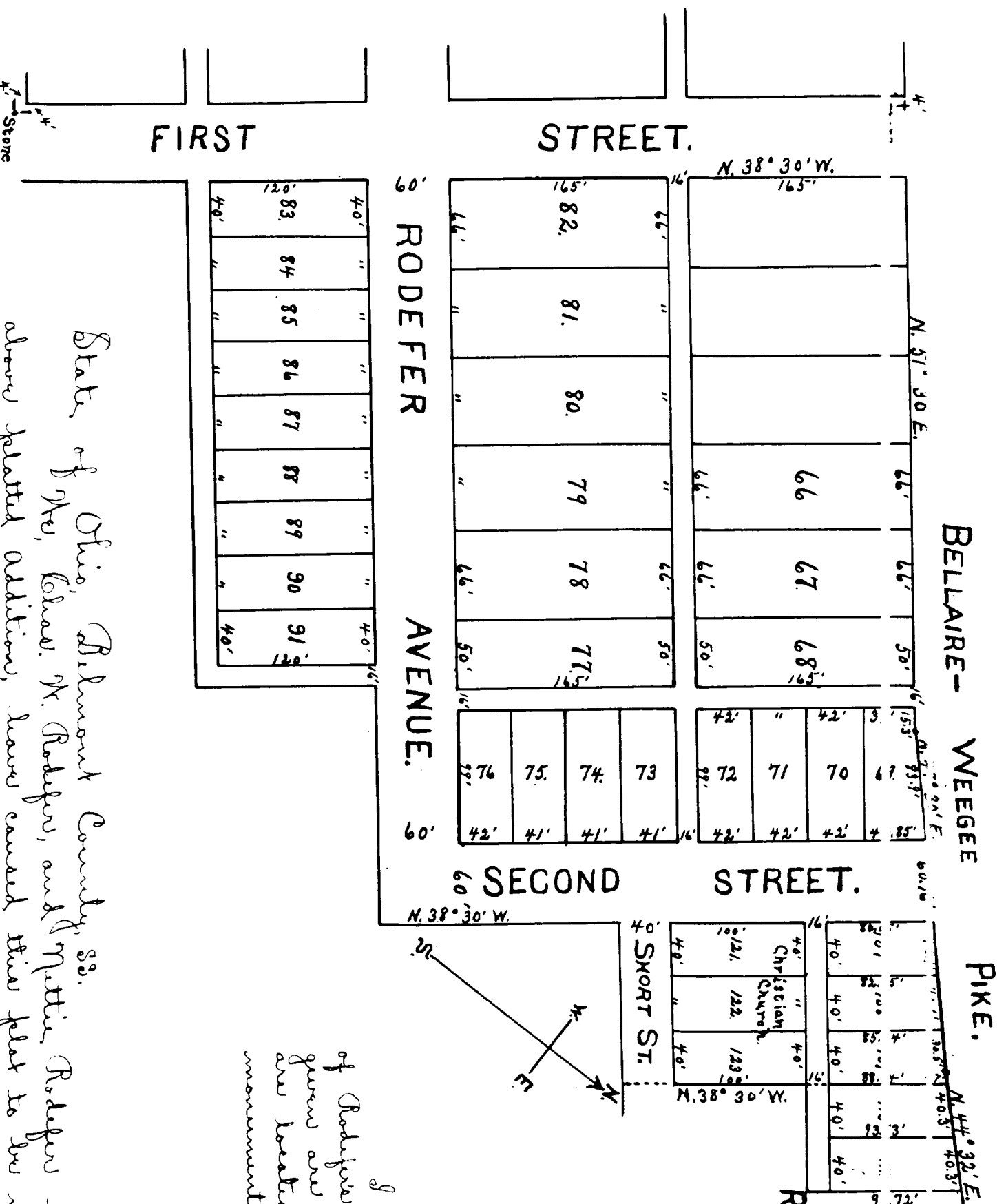


Sec. 27, T. 2, R. 2.

SEE CARPET & SHADY SIDE  
SEE CARPET & SHADY SIDE



**PLAT**  
OF  
**RODEFERS 4TH ADDITION**  
TO  
**SHADYSIDE, O.**

JAN. 26, 1906.

Scale 1/4"=100'

A. J. Harbaugh  
Civ. Engr.

I hereby certify that the above is a correct plat of Roddefers fourth addition to Shadyside, O. that the monuments given are from actual surveys, that the streets and alleys are located as shown and that the good and sufficient monuments are in the positions indicated.  
A. J. Harbaugh, Civ. Engr.

State of Ohio, Belmont County, ss.  
I, Wm. E. Blair, W. Roddefers, and Mattie Roddefers, wives and Mary D. Roddefers, owners of the above platted addition, have caused this plat to be made, and do hereby set apart and dedicate to public use the streets, avenues, and alleys shown therein.  
Witness our signatures this 16th day of February, 1906.  
E. Blair, W. Roddefers, Mattie Roddefers, Mary D. Roddefers.

4.5744 A = See L. 101,  
L. 843 " = State.  
6.387 " = State.

State of Ohio, Belmont County, ss.  
I, Wm. E. Blair, W. Roddefers, and Mattie Roddefers, wives and Mary D. Roddefers, owners of the above platted addition, have caused this plat to be made, and do hereby set apart and dedicate to public use the streets, avenues, and alleys shown therein.  
Witness our signatures this 16th day of February, 1906.  
E. Blair, W. Roddefers, Mattie Roddefers, Mary D. Roddefers.

Witnessed E. E. Shupford, Atty. Auditor.

Received Feb. 9-1906 at 11 A.M.  
Recorded March 5-1906

John S. McFarland Recorder