

COLERAIN TOWNSHIP

PEASE TOWNSHIP

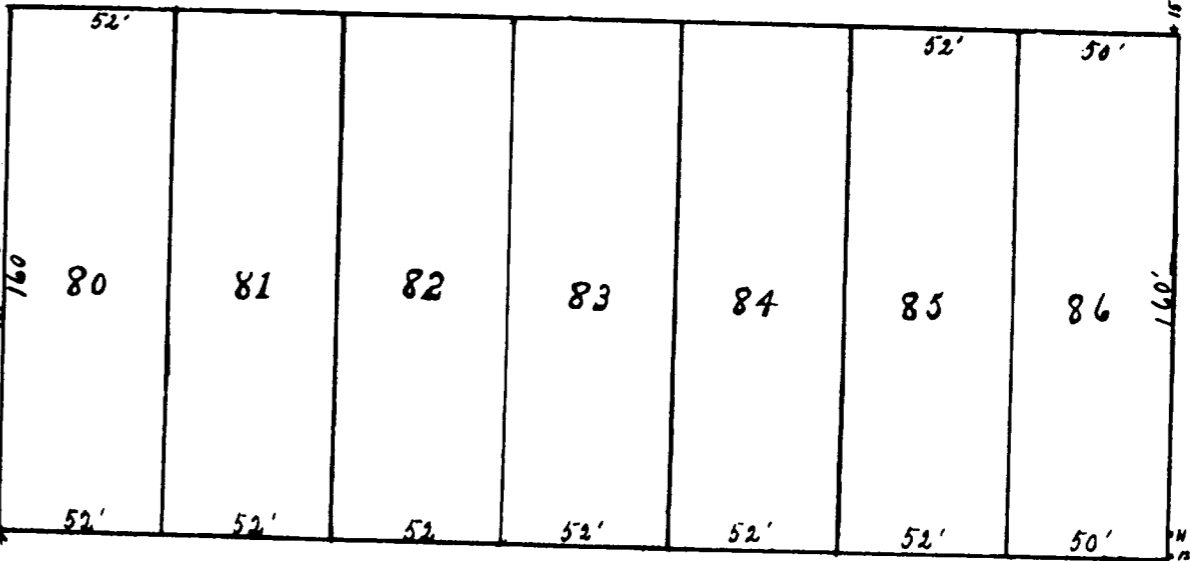
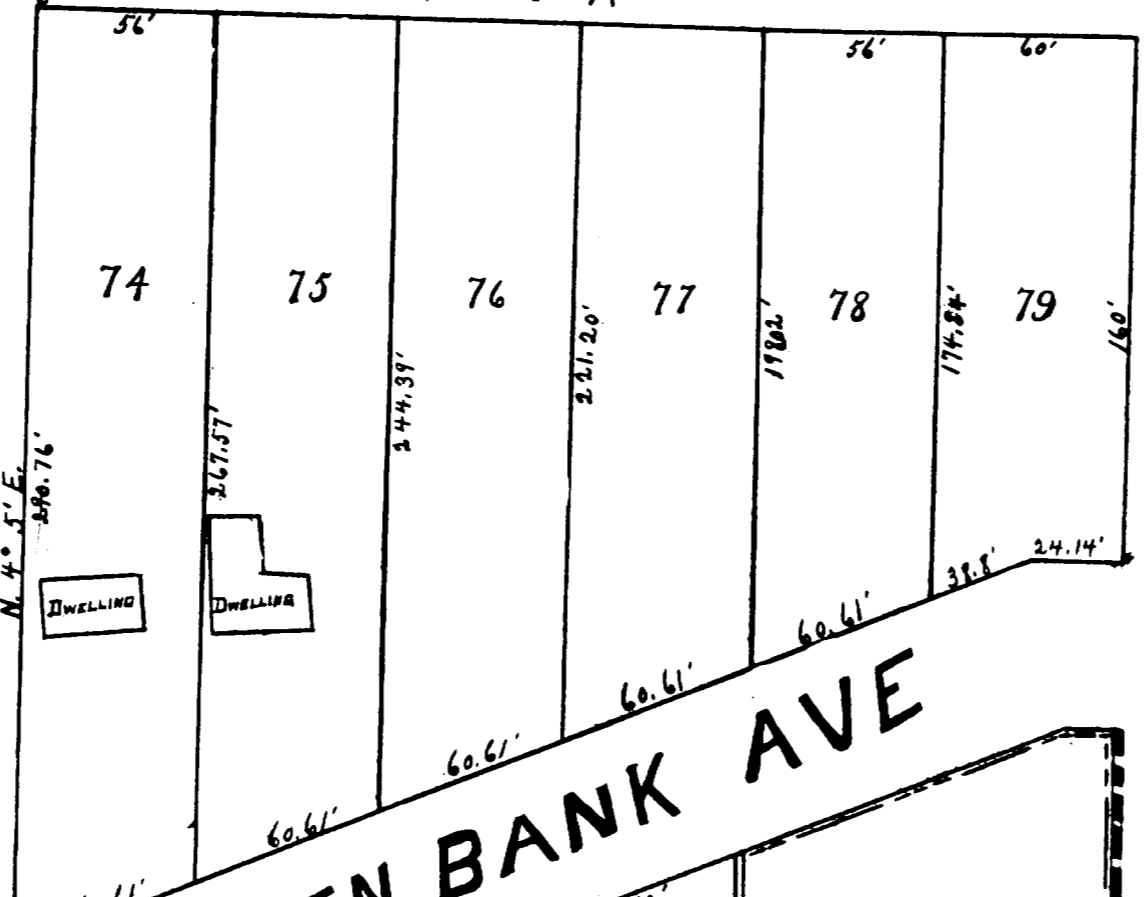
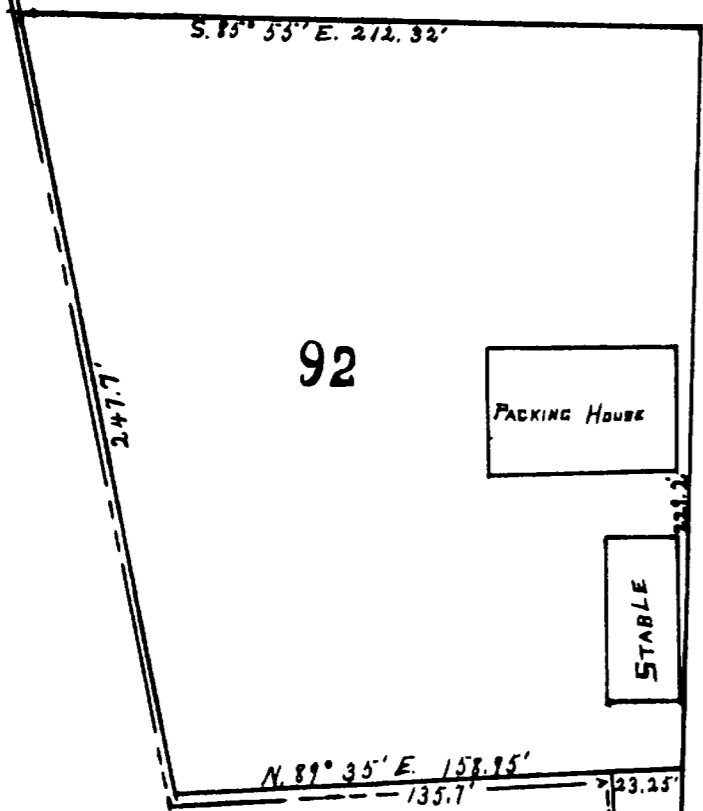
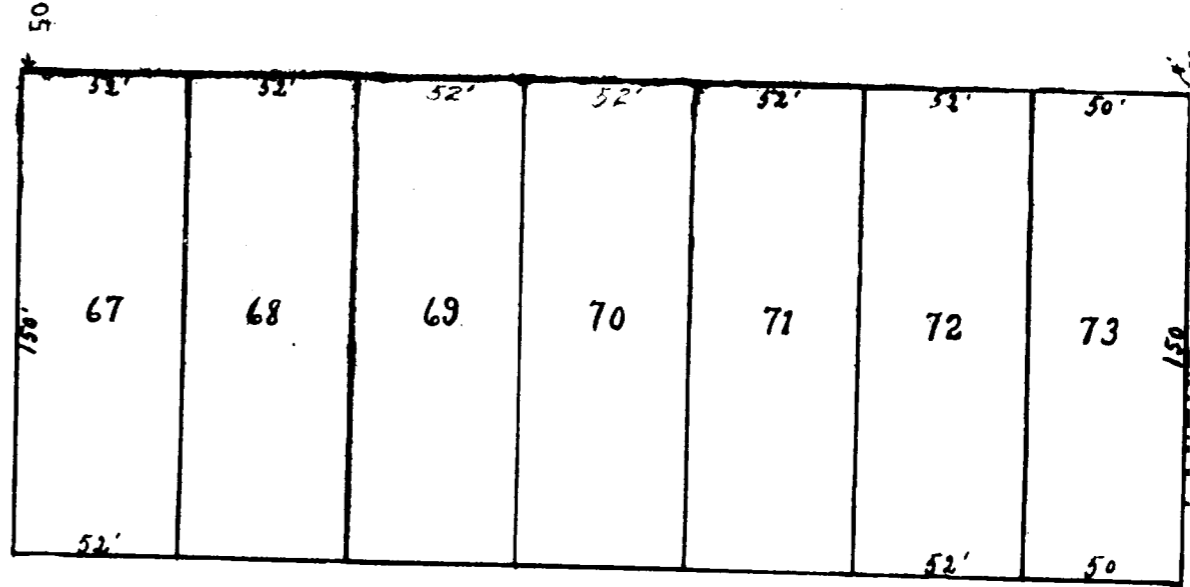
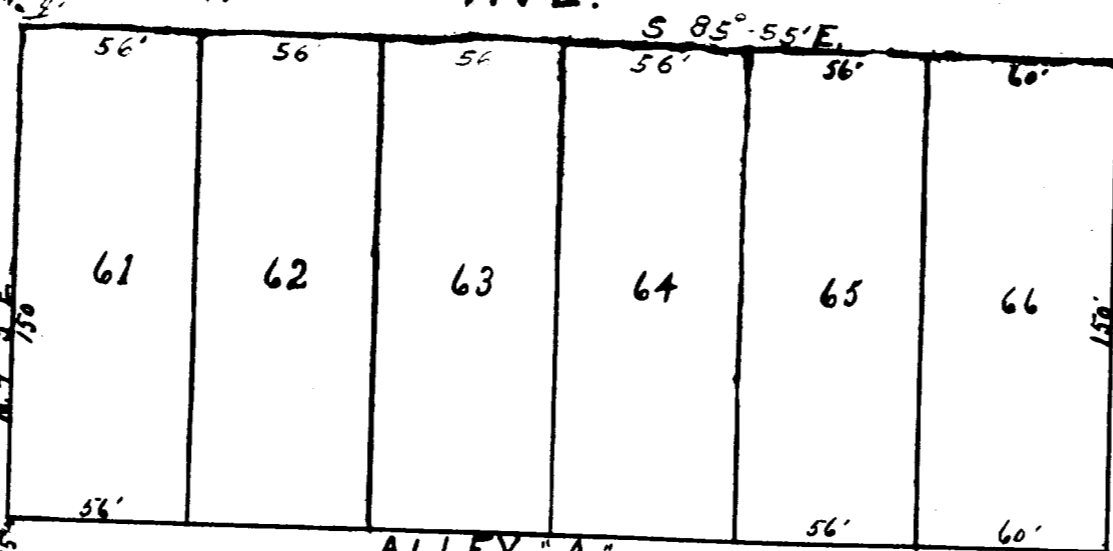
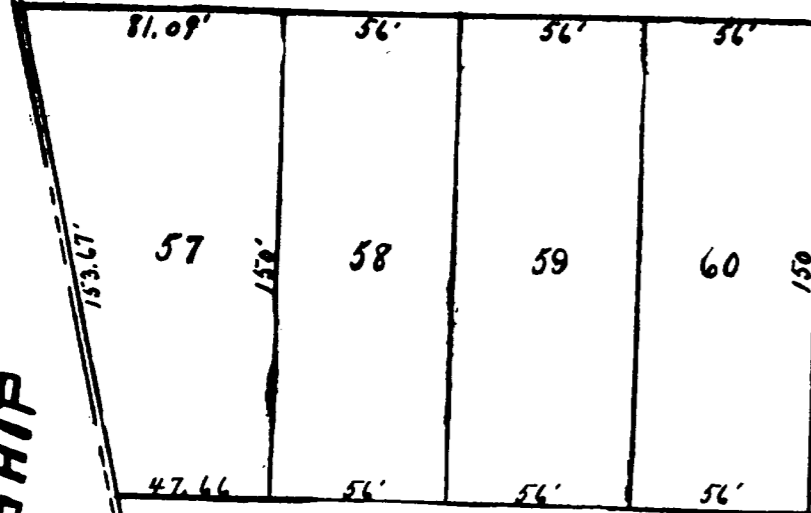
TOWNSHIP LINE

CHURCH

SCOTT

GREEN BANK AVE

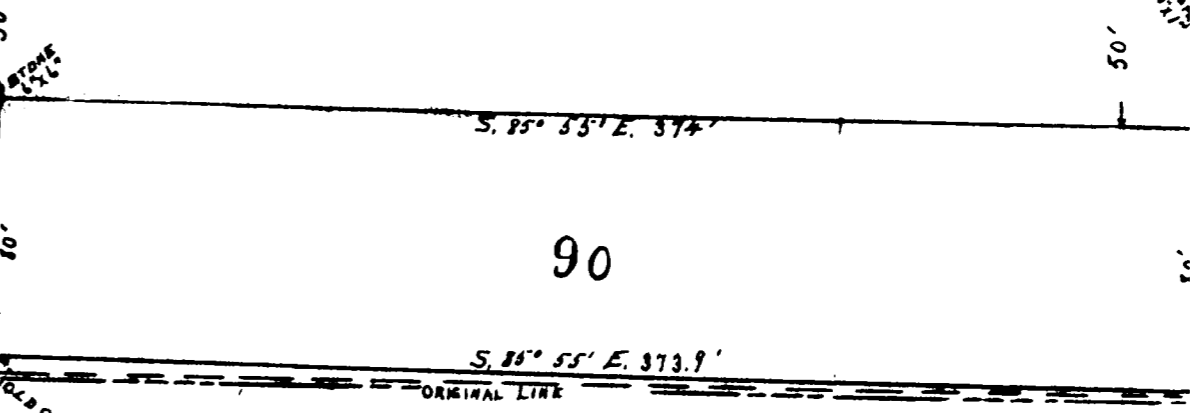
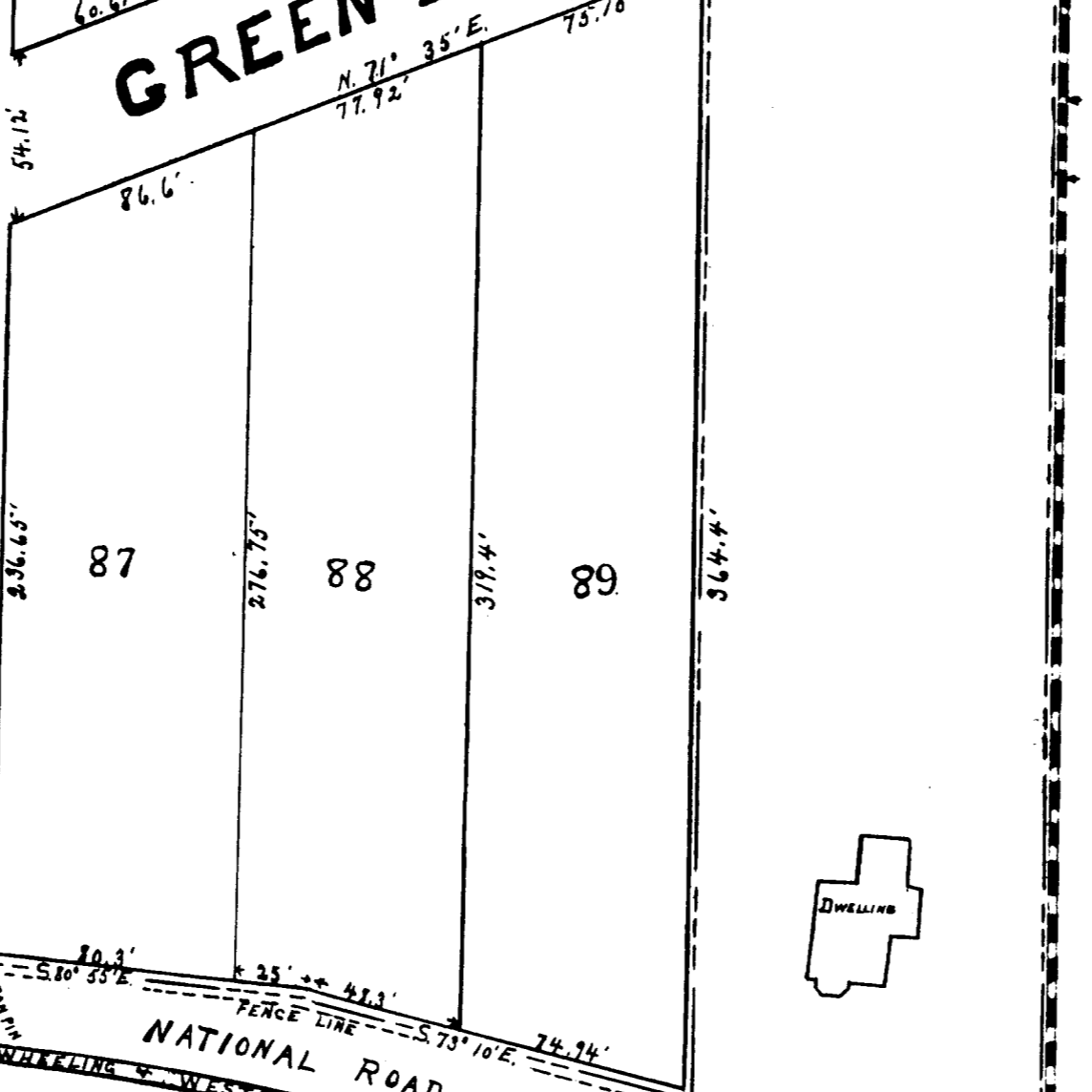
NATIONAL ROAD



CEMETERY



91



Plat of a survey made June 8<sup>th</sup> 1905 for Charles C. Wilson and Frances Brynble, of a tract of land, situated in the N. H. & S. H. Quarters of Section 4 and the North East Quarter of Section 10, Townships Six and Range 3, in the Townships of Pease and Colerain, County of Belmont and State of Ohio. Said tract was divided into a number of Lots, Streets and Alleys. The Lots are numbered, the streets and alleys named, and are of the size and located as shown upon the above plat. This subdivision is enclosed by a broken dotted line and contains 27 acres.

There is planted at the North West corner of Lot Number 90, as shown thereon, a good and sufficient stone monument 6x6 inches at the top also 6 iron monuments 30 inches long by 1 inch thick, placed as shown upon the plat at right angles to the property line and 4 feet distant from the lot line, one near the S. H. corner of Lot No. 7; one near the South East corner of Lot No. 19; one near the North West corner of Lot No. 6; one near the N. E. corner of Lot No. 7 one near the S. H. corner of Lot No. 87; and one near the S. E. corner of Lot No. 86, from which to make future measurements and surveys.

There are 26 2/3 acres in Sec. 4 Township 6 Range 3 Pease Township, and 2/3 acres in Sec. 10, Township 6 Range 3 Colerain Township.

C. C. Smith, Surveyor,  
Wheeling, W. Va.

Transferred June 10-1905  
A. H. Beatty,  
Auditor.

Received June 10-1905 at 9 a. m.  
Recorded June 26-1905  
John H. McFarland  
Recorder