

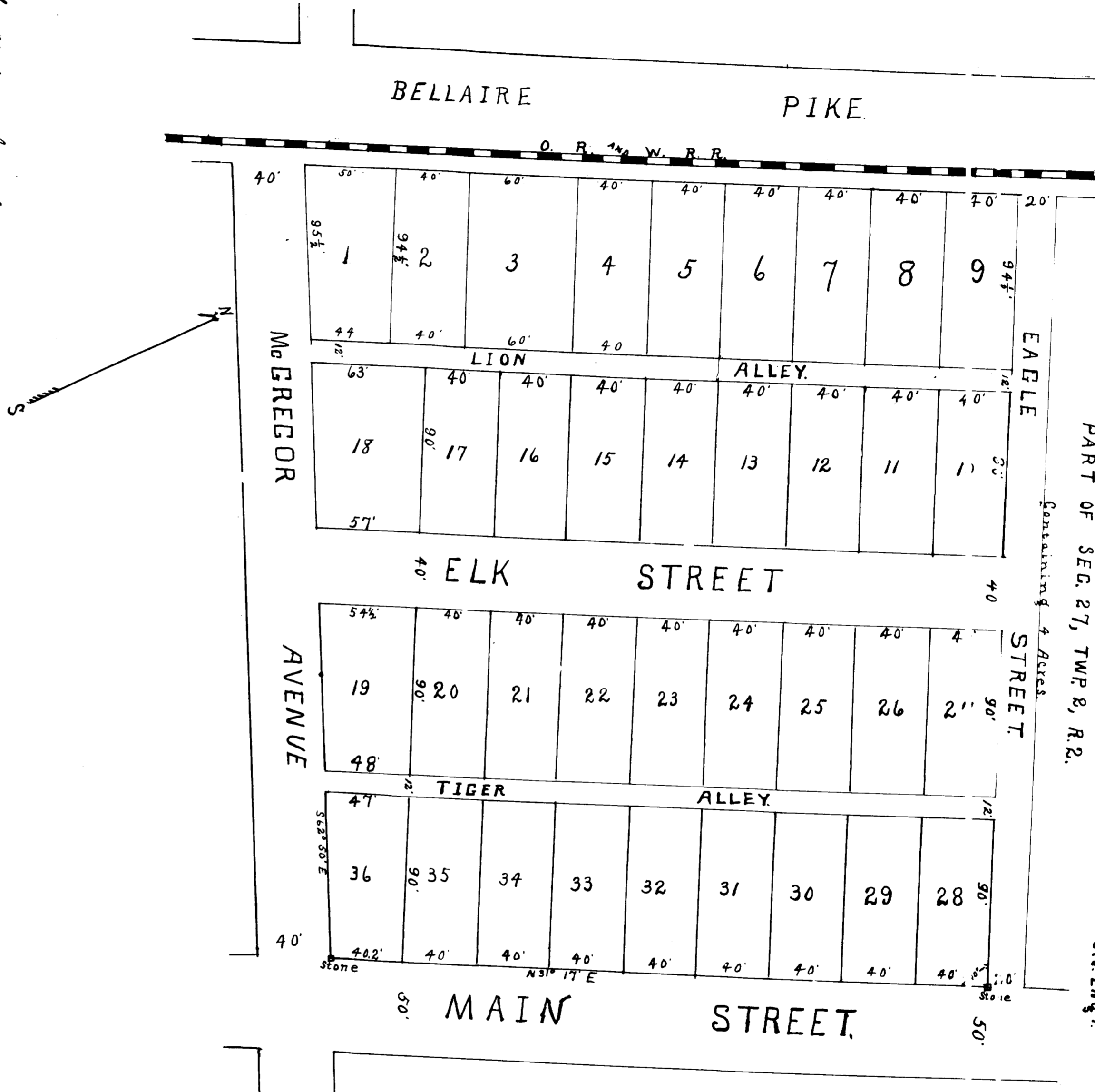
PLAT OF CUNNINGHAM'S
ADDITION TO SHADYSIDE, O.

Being Subdivision of Tracts 12 & 13 of Brangle's Addition.
February, 1905.

Scale 1" = 50ft.

R. J. Harbaugh
Civ. Engr.

PART OF SEC. 27, TWP. 8, R. 2.



I, Harry C. Gentry, that the above is a correct plat of Mrs. C. J. Cunningham's subdivision of tracts 12 and 13 of Brangle's Addition, made from surveys and measurements that the lots are marked and streets and alleys named and located as shown on the plat, and that the good and sufficient stone monuments are placed at points points shown, from which to make future surveys, hereafter.

Witness my hand and the seal of my office this 27th day of February, 1905.
R. J. Harbaugh
Deputy Auditor

Received Feb. 27th 1905, at 4 P.M.
Recorded Mar 4/1905
John A. McFarland
Recorder.

State of Ohio, Cuyahoga County, ss.
I, Harry C. Gentry, that the above is a correct plat of Mrs. C. J. Cunningham's subdivision of tracts 12 and 13 of Brangle's Addition, made from surveys and measurements that the lots are marked and streets and alleys named and located as shown on the plat, and that the good and sufficient stone monuments are placed at points points shown, from which to make future surveys, hereafter.

Witness my hand and the seal of my office this 27th day of February, 1905.
R. J. Harbaugh
Deputy Auditor

State of Ohio, Cuyahoga County, ss.
I, Harry C. Gentry, that the above is a correct plat of Mrs. C. J. Cunningham's subdivision of tracts 12 and 13 of Brangle's Addition, made from surveys and measurements that the lots are marked and streets and alleys named and located as shown on the plat, and that the good and sufficient stone monuments are placed at points points shown, from which to make future surveys, hereafter.

Witness my hand and the seal of my office this 27th day of February, 1905.
R. J. Harbaugh
Deputy Auditor