

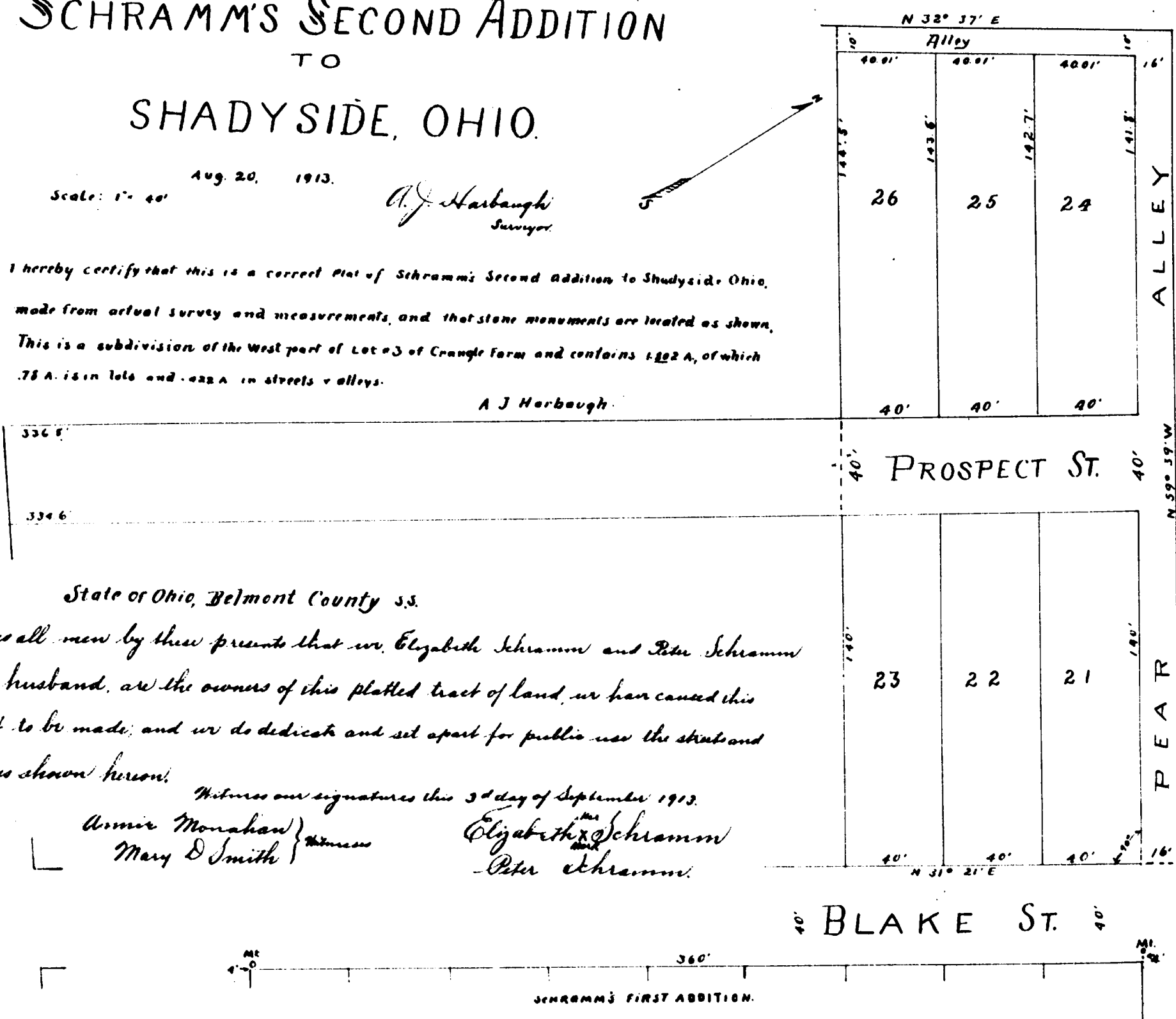
SCHRAMM'S SECOND ADDITION TO SHADYSIDE, OHIO.

Scale: 1" = 40' Aug. 20, 1913.

A. J. Harbaugh
Surveyor

I hereby certify that this is a correct Plat of Schramm's Second Addition to Shadyside, Ohio, made from actual survey and measurements, and that stone monuments are located as shown. This is a subdivision of the West part of Lot #3 of Crangle Farm and contains 1.222 A., of which .78 A. is in lots and .442 A. in streets & alleys.

A. J. Harbaugh



State of Ohio, Belmont County ss.

Knows all men by these presents that we, Elizabeth Schramm and Peter Schramm her husband, as the owners of this platted tract of land, we have caused this plat to be made, and we do dedicate and set apart for public use the streets and alleys shown hereon.

Witness our signatures this 3^d day of September 1913.

Archie Monahan }
Mary D. Smith } witnesses

Elizabeth Schramm
Peter Schramm

BLAKE ST.

State of Ohio, Belmont County ss.

Before me, a Notary Public in and for said county, personally appeared Elizabeth Schramm and Peter Schramm her husband, and did acknowledge the foregoing platting and dedicating to be their free act and deed.

In witness whereof I have hereunto set my hand and official seal this 3^d day of September 1913

J. H. Morrell
Notary Public
(L.S.)

The above plat was accepted at a special meeting of Council held Sept. 15, 1913.

Attest
Geo. E. McKelvey
Village Clerk.

Russell Sammons
Mayor

Transferred Sept. 18, 1913.
Emerson Campbell Auditor
C. F. McLeary Dep.
Fee 601 00.

Received for record Sept 18th 1913 at 3 o'clock P.M.
Recorded Sept. 20, 1913.

E. E. Workman, Recorder
By *J. H. Morrell*, Dep.