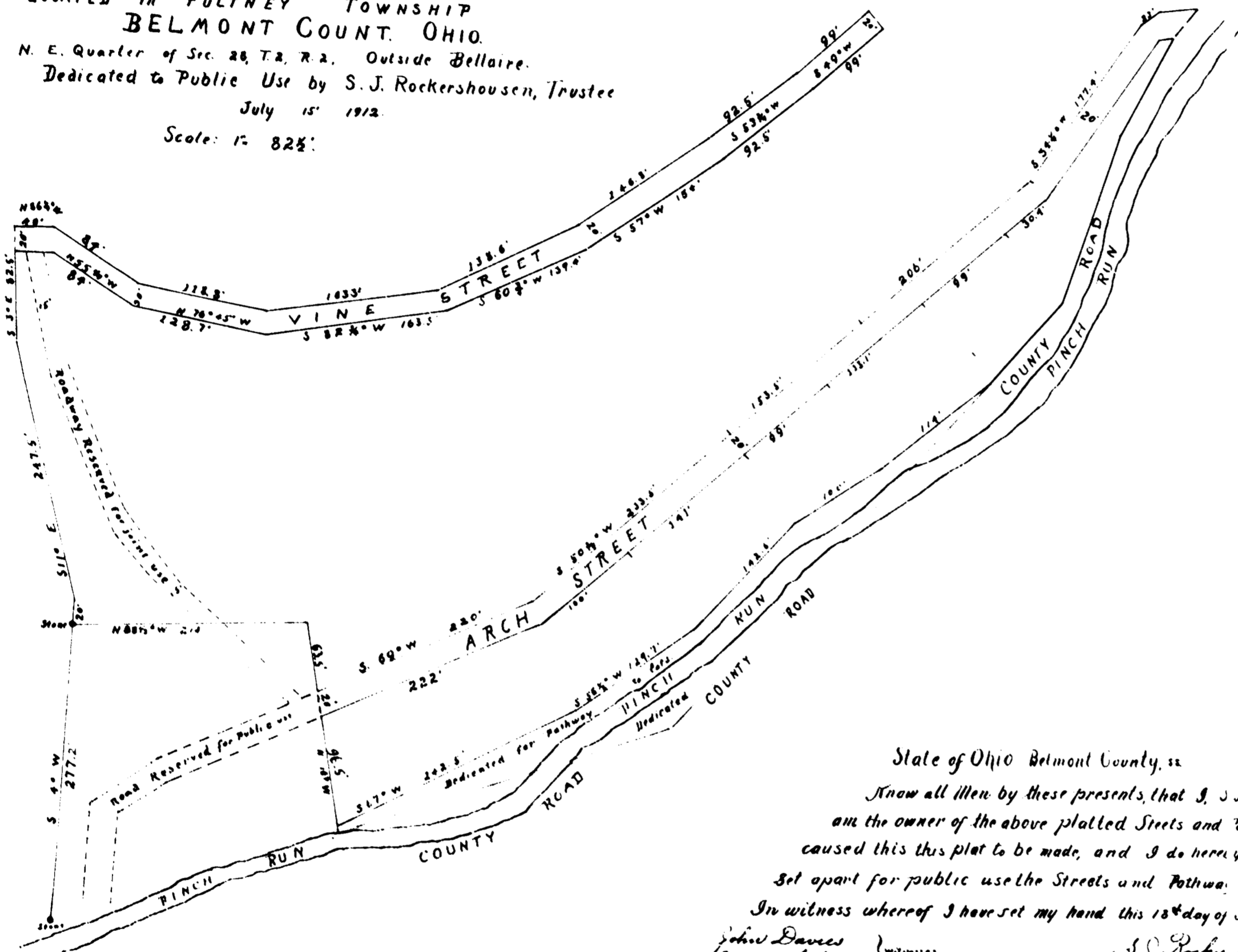


PLAT OF STREETS AND ROADS

LOCATED in PULTNEY TOWNSHIP
BELMONT COUNTY, OHIO.
N. E. Quarter of Sec. 28, T. 2, R. 2. Outside Bellaire.
Dedicated to Public Use by S. J. Rockershausen, Trustee
July 15, 1912.
Scale: 1" = 825'



State of Ohio, Belmont County, ss.
Know all Men by these presents, that S. J. Rockershausen Trustee
am the owner of the above platted Streets and Pathway, that I have
caused this this plat to be made, and I do hereby dedicate and
set apart for public use the Streets and Pathway shown hereon
In witness whereof I have set my hand this 15th day of July, A.D. 1912
John Davies }
Jesse Childs } Witnesses
S. J. Rockershausen Trustee

I hereby certify that this is a correct
Plat of Vine St, Arch St, and land adjacent to Pinch Run
and the County Road, owned by S. J. Rockershausen Trustee
and by him dedicated to Public use, that the measurements
are from actual surveys, that the monuments are located
as shown and that the amount dedicated comprises 1.425 Acres.
W. J. Harbaugh, Civ. Eng.

State of Pennsylvania, Allegheny County, ss.
Before me a Notary Public in and for said county, personally appeared
S. J. Rockershausen, Trustee, and did acknowledge the foregoing signing,
plating and dedicating to be his free act and deed.
In witness whereof I have hereunto set my hand and official seal
this 18th day of July, A.D. 1912.

Transferred Aug 22, 1912
Emerson Campbrell, Auditor
See 107 21

John M. Davis, Notary Public
My commission expires Apr 12, 1913 (L.S.)

Record for Record Aug 22, 1912 at 1 P.M.
Recorded Oct. 25, 1912 Vol. 6 - Page 78
Sub 1912 70

E. E. Peterson
By J. H. Bluff