

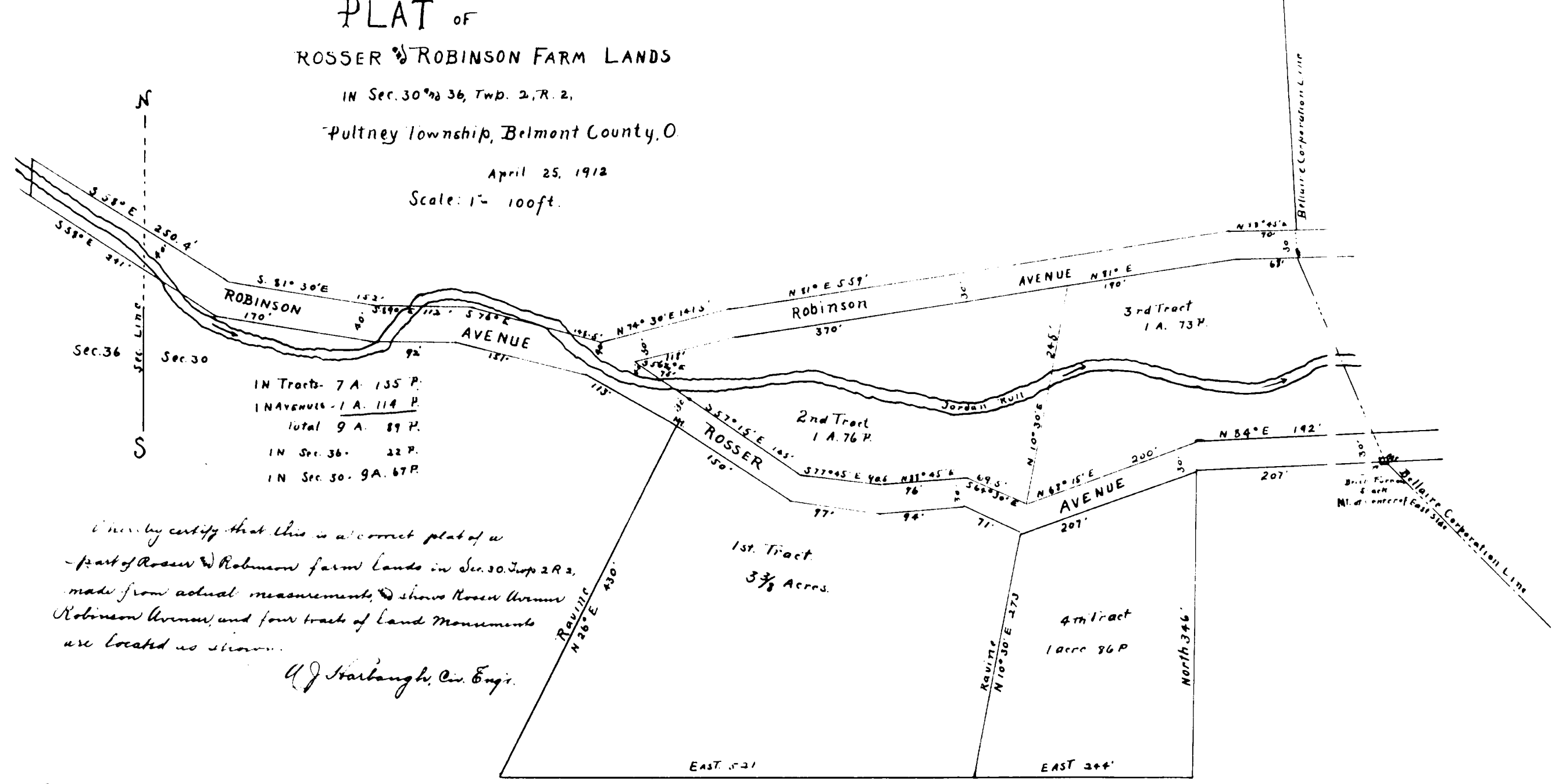
PLAT OF ROSSER & ROBINSON FARM LANDS

IN Sec. 30th 36, Twp. 2, R. 2.

Pultney Township, Belmont County, O

April 25, 1912

Scale: 1" = 100ft.



I hereby certify that this is a correct plat of a part of Rosser & Robinson farm lands in Sec. 30 Twp. 2 R. 2. made from actual measurements, & shows Rosser & Robinson corners, and four tracts of land monuments are located as shown.

A. J. Starbough, Civ. Eng.

State of Ohio, Belmont County, ss
 Know all men by these presents, that we, Charles Rosser and Anna Rosser his wife, Geo. C. Robinson & Emma L. Robinson his wife, are the owners of the above platted farm lands and corners, that we have caused this plat to be made and do hereby dedicate and set apart for public use the corners shown hereon.

In witness we have hereunto set our hands
 this 25th day April, A. D. 1912

L. W. Cooper
 Grace Robinson } witnesses

C. Rosser
 Anna Rosser
 Geo. C. Robinson
 Emma L. Robinson

Transferred May 9, 1912
 Emmerson Campbell Auditor
 Per M.C.
 Fee 50¢

State of Ohio, Belmont County, ss
 Before me a Notary Public in and for said county personally appeared Charles Rosser and Anna Rosser his wife, Geo. C. Robinson and Emma L. Robinson his wife and did each acknowledge the foregoing platting and dedicating to be their free act and deed for the purposes set forth.

In witness whereof I have hereunto set my hand and official seal this 25th day of April, A. D. 1912.

L. W. Cooper
 Notary Public, S.S.

Received for Record May 11-1912
 at 8 o'clock A. M.
 Recorded May 15, 1912
 In Belmont County Records of Plats
 Volume 6 - Page 69.

E. J. Workman
 Recd. & Recorded
 Fee 60¢ Paid Dep