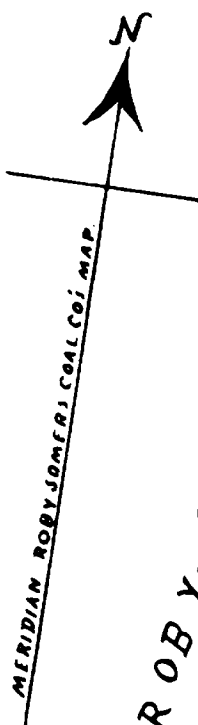


SKETCH SHOWING EXCHANGE OF COAL PROPERTY
BY THE BARTON & ROBY-SOMERS COAL COMPANIES.

COMPLETE FROM PARTS BELONGING TO
THE BARTON AND ROBY-SOMERS COAL COMPANIES

A



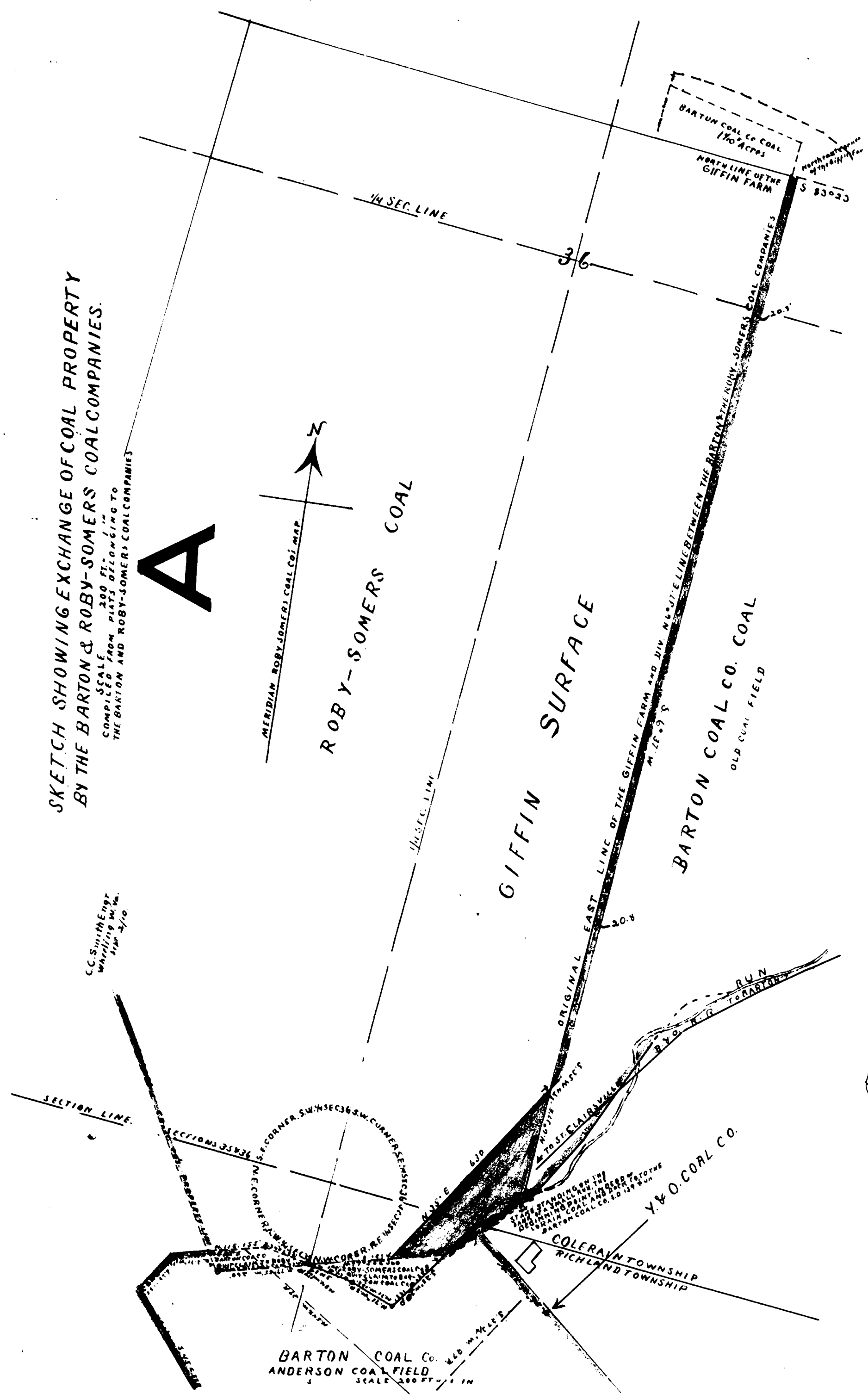
MERIDIAN ROBY-SOMERS COAL CO. MAP

ROBY-SOMERS COAL

GIFFIN SURFACE

BARTON COAL CO. COAL
OLD COAL FIELD

BARTON COAL CO. COAL
170 ACRES
NORTH LINE OF THE
GIFFIN FARM



Transferred to Roby Somers Coal Company (See Book)
September 15-1911

E. E. Shepherd Auditor

Received for Record Sept 15 1911 at 1 o'clock P.M.

Recorded Sept 15 1911 in Belmont County Record of Deeds Vol. 183 Page 558

E. E. Shepherd
Recorder

By J. A. Ketchum Dep.