

CERTIFICATE OF OWNERS:
 We, the undersigned, hereby certify that we are the owners of Real Estate represented by this Plat and that we have caused the same to be subdivided into lots as shown hereon.
DEDICATION:
 We, the undersigned, being the owners of property shown on this plat as hereby dedicated to the Village of Flushing and Flushing Township for public use the streets and Alleys shown hereon.

- 1-2-3 & 4 George J. ...
- 5-6 ...
- 7-8 ...
- 9-10 ...
- 11 ...
- 12 ...
- 13 ...
- 14 ...
- 15 ...

- 16 ...
- 17 ...
- 18 ...
- 19 ...
- 20 ...
- 21 ...
- 22 ...
- 23-26 ...
- 24-25 ...
- 26 ...
- 27 ...
- 28 ...
- 29 ...
- 30 ...
- 31 ...
- 32 ...
- 33 ...
- 34 ...

35 ...
 37 ...
 38-39-40-41 ...
 42 ...

TRANSFERRED ON TAX MAP
 COUNTY ENGINEER
 R. U. BOCCABELLA

Accepted by the Village of Flushing
 Mayor
 Clerk

STATE OF OHIO
 COUNTY OF DELAWARE

Before me a Notary Public in and for said County personally appeared the persons whose names appear on the left hereof, and acknowledged they signed this map and that the same was their free act and deed. In testimony whereof I have hereunto set my hand and official seal this 14th day of March, 1957.

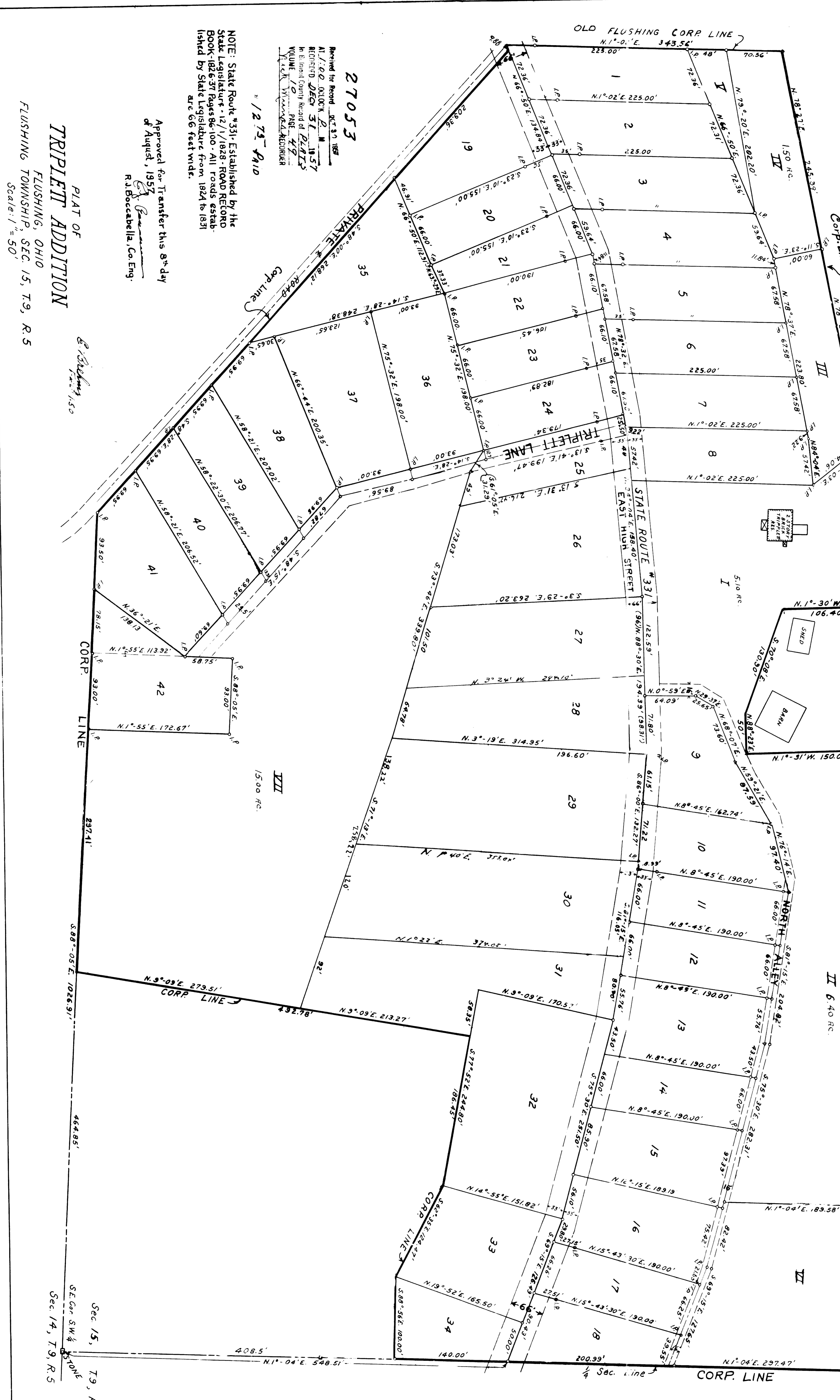
Notary Public

CERTIFICATE OF ENGINEER:
 I, the undersigned, hereby certify that the subdivision known as the TRIPLETT ADDITION, was staked by me as represented by this Plat and that the monuments shown hereon are in place.

Engineer
 Certificate No. 545

Accepted by the Commissioners of Belmont County Ohio
 this 14th day of March, 1957.

Chairman
 Clerk



27053
 Received for Record OCT 31 1957
 A. J. ...
 RECORDED OCT 31 1957
 In Belmont County Record of PLATS
 VOLUME 70 PAGE 49
 W. C. ...

NOTE: State Route #331, Established by the State Legislature 12/1/1828-ROAD REFORM BOOK 1825-57 Page 86-100. All roads established by State Legislature from 1824 to 1851 are 66 feet wide.

Approved for Transfer this 8th day of August, 1957
 R. U. BOCCABELLA, Co. Eng.

PLAT OF
TRIPLETT ADDITION
 FLUSHING, OHIO
 FLUSHING TOWNSHIP, SEC. 15, T. 9, R. 5
 Scale: 1" = 50'