

PLAT

Showing the proposed boundary of the Incorporated Village of Wilson, Ohio
Sited in the SW 1/4 Sec. 15, Wayne Twp, Belmont Co. and the W 1/2 Sec. 15, 16
Sundbury Twp, Monroe Co.
Scale 1" = 330'

CERTIFICATE

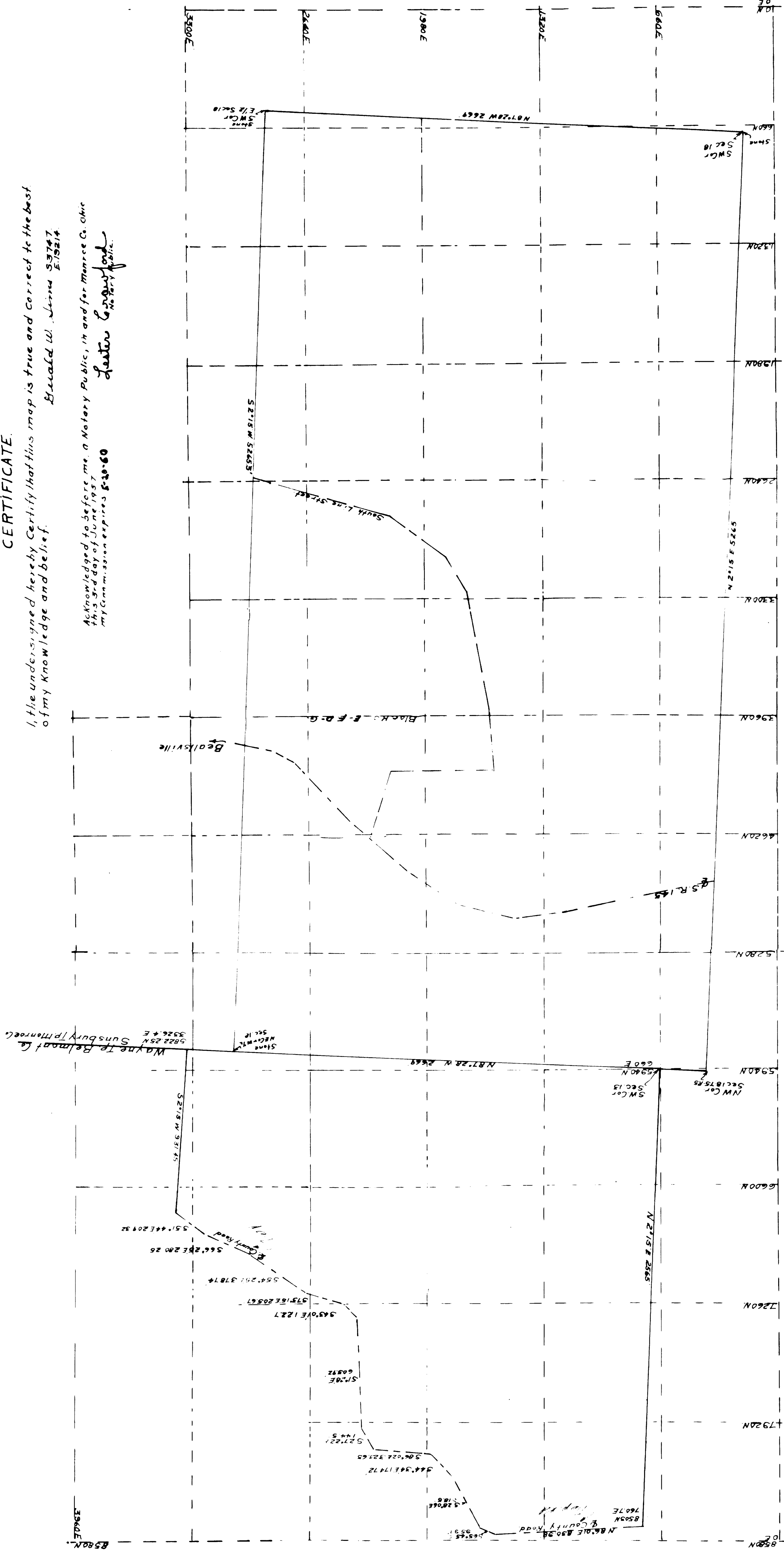
I, the undersigned, hereby certify that this map is true and correct to the best
of my knowledge and belief.

Witness my hand and seal
this 30th day of June 1957

Attest: W. James S. 1957

Notary Public, in and for Monroe Co. Ohio

Lester C. [Signature]



Received for Record AUG. 23 1957

12:40 P.M.

OCTOBER 1957

Belmont County Board of Plats

Volume 10 Page 45-B

Y. [Signature]

SAID

We, the undersigned Board of Monroe County Commissioners, by virtue of Power
conferred by law do hereby approve as sign this plat this third day of June 1957.

[Signature]

[Signature]

[Signature]

FOR PROCEEDINGS OF THIS PLAT SEE
VOLUME 417 PAGE 310 DEED RECORDS