

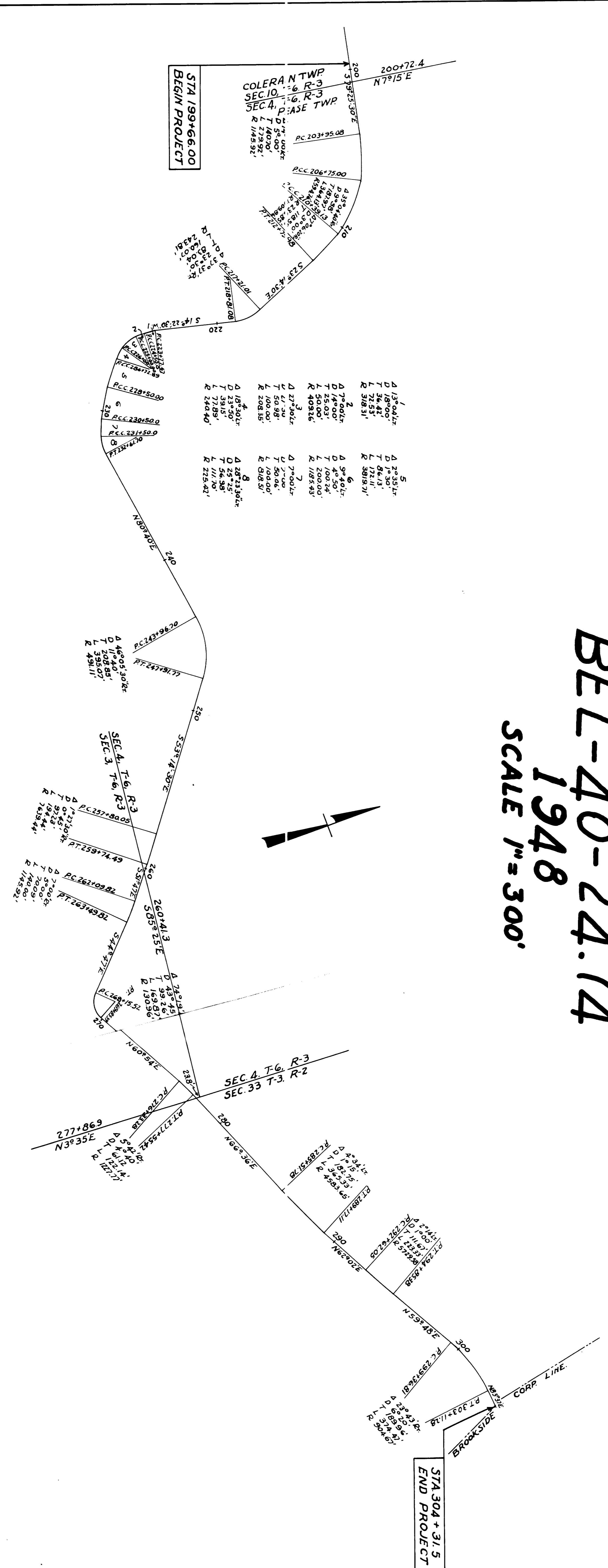
LOCATION PLAN

BEL-40-24.74

1948

SCALE 1" = 300'

FIG. NO.	STATE	PROJECT	FILE NO.
2	OHIO		



CENTER LINE REFERENCE MONUMENTS WILL BE SET BEFORE OR AFTER CONSTRUCTION

STA 203+35.08 Monument	206+75.00	210+33.13	212+75.39	217+21.01	218+81.08	223+77.47	224+50.00	225+00.00	226+00.00	226+77.89	228+50.00
32'-31"	32'-31"	32'-31"	32'-31"	32'-31"	32'-31"	32'-31"	32'-31"	32'-31"	32'-31"	32'-31"	32'-31"
230+50.00	231+50.00	232+61.70	238+00.00	243+96.70	247+91.77	253+00.00	257+80.05	259+74.49	262+09.82	263+49.82	268+15.52
35'-35"	35'-35"	35'-35"	35'-35"	35'-35"	35'-35"	35'-35"	35'-35"	35'-35"	35'-35"	35'-35"	35'-35"
269+85.39	273+00.00	276+33.28	277+55.42	281+00.00	285+51.78	289+17.11	292+62.05	294+65.38	299+36.81	303+03+11.28	
32'-31"	32'-31"	32'-31"	32'-31"	32'-31"	32'-31"	32'-31"	32'-31"	32'-31"	32'-31"	32'-31"	

I hereby certify that this plat is correct to the best of my knowledge and belief.

Signed ERM Cullen Division Engineer
Date 7-6-48

Received for Record July 8, 1948
At COLUMBUS, OHIO P. M. 1948
RECORDED 19
In Belmont County Record at Paris
VOLUME 28 PAGE 37
L. M. Pusey RECORDER

39775 \$16.30 PAID