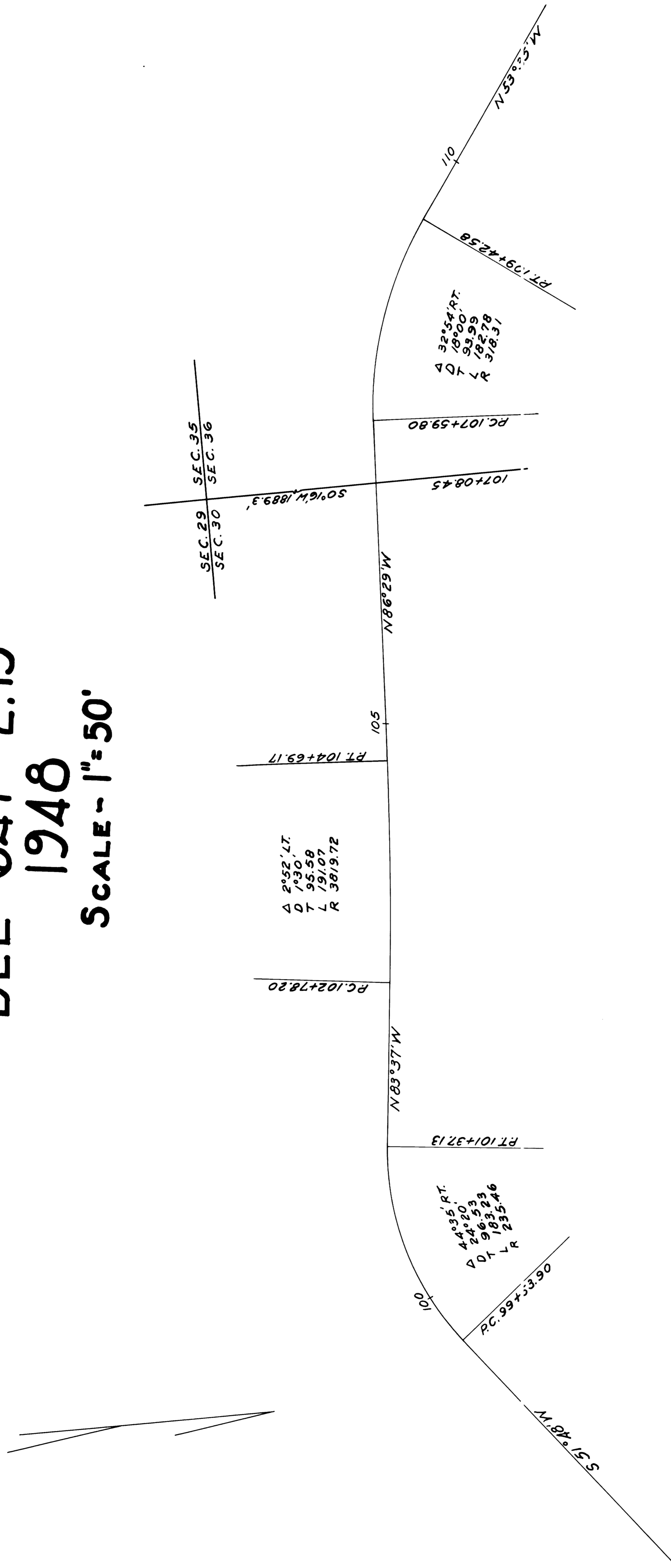


LOCATION PLAN

BEL-647-2.15

1948

SCALE - 1" = 50'



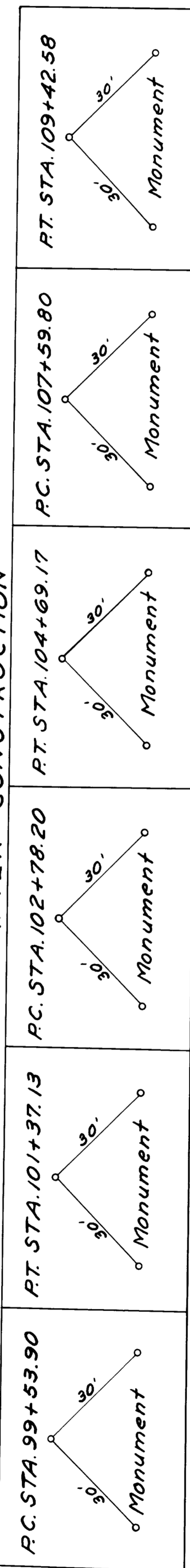
37729

L. 70 PAID

Received for Record MAR. 18, 1948
 AT 3:13 P.M. O.C.L.O.C.K.
 RECORDED BY P.M.
 in Belmont County Record of Plats
 VOLUME 10 PAGE 27
 Filed L. J. Lundy RECORDER

BELMONT COUNTY
 PEASE TOWNSHIP
 SEC. 30 T-3N R-2W

CENTER LINE REFERENCE MONUMENTS WILL BE SET BEFORE OR AFTER CONSTRUCTION



I hereby certify that this plat is correct to the best of my knowledge and belief.

Signed E. K. McLaughlin Division Engineer
 Date MAR. 18, 1948