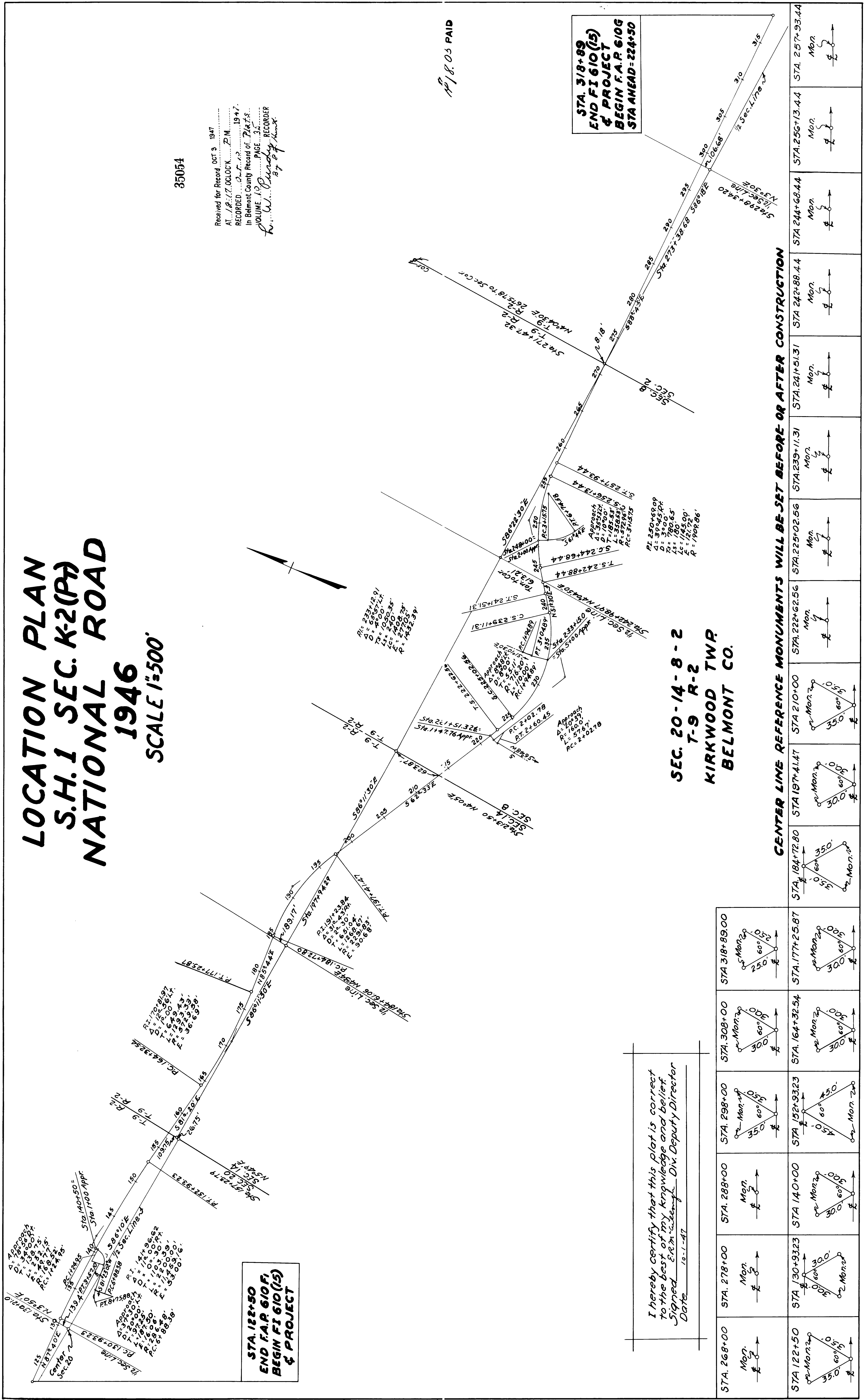


LOCATION PLAN S.H. 1 SEC. K-2 (P) NATIONAL ROAD 1946 SCALE 1"=500'



35054

Received for Record, OCT 9 1947
 AT 11:17 O'CLOCK P.M.
 RECORDED In Belmont County Record of Plats
 VOLUME 13 PAGE 3
 W. W. Purdy RECORDER

\$18.05 PAID

**STA. 318+89
 END F.A.P. 610 (15)
 & PROJECT
 BEGIN F.A.P. 610G
 STA AHEAD = 224+50**

**STA. 122+50
 END F.A.P. 610 F.
 BEGIN F.I. 610 (15)
 & PROJECT**

**SEC. 20-14-8-2
 T-9 R-2
 KIRKWOOD TWP.
 BELMONT CO.**

CENTER LINE REFERENCE MONUMENTS WILL BE SET BEFORE OR AFTER CONSTRUCTION

I hereby certify that this plot is correct
 to the best of my knowledge and belief.
 Signed Erin C. White Div. Deputy Director
 Date 10-1-47

STA. 268+00 Mon.	STA. 278+00 Mon.	STA. 288+00 Mon.	STA. 298+00 Mon.	STA. 308+00 Mon.	STA. 318+89.00 Mon.
STA. 122+50 Mon.	STA. 130+93.23 Mon.	STA. 140+00 Mon.	STA. 152+93.23 Mon.	STA. 164+32.54 Mon.	STA. 177+25.87 Mon.
STA. 184+72.80 Mon.	STA. 197+44.47 Mon.	STA. 210+00 Mon.	STA. 222+62.56 Mon.	STA. 239+11.31 Mon.	STA. 241+51.31 Mon.
STA. 242+88.44 Mon.	STA. 244+68.44 Mon.	STA. 256+13.44 Mon.	STA. 257+93.44 Mon.	STA. 262+30.2 Mon.	STA. 267+93.44 Mon.