

21744

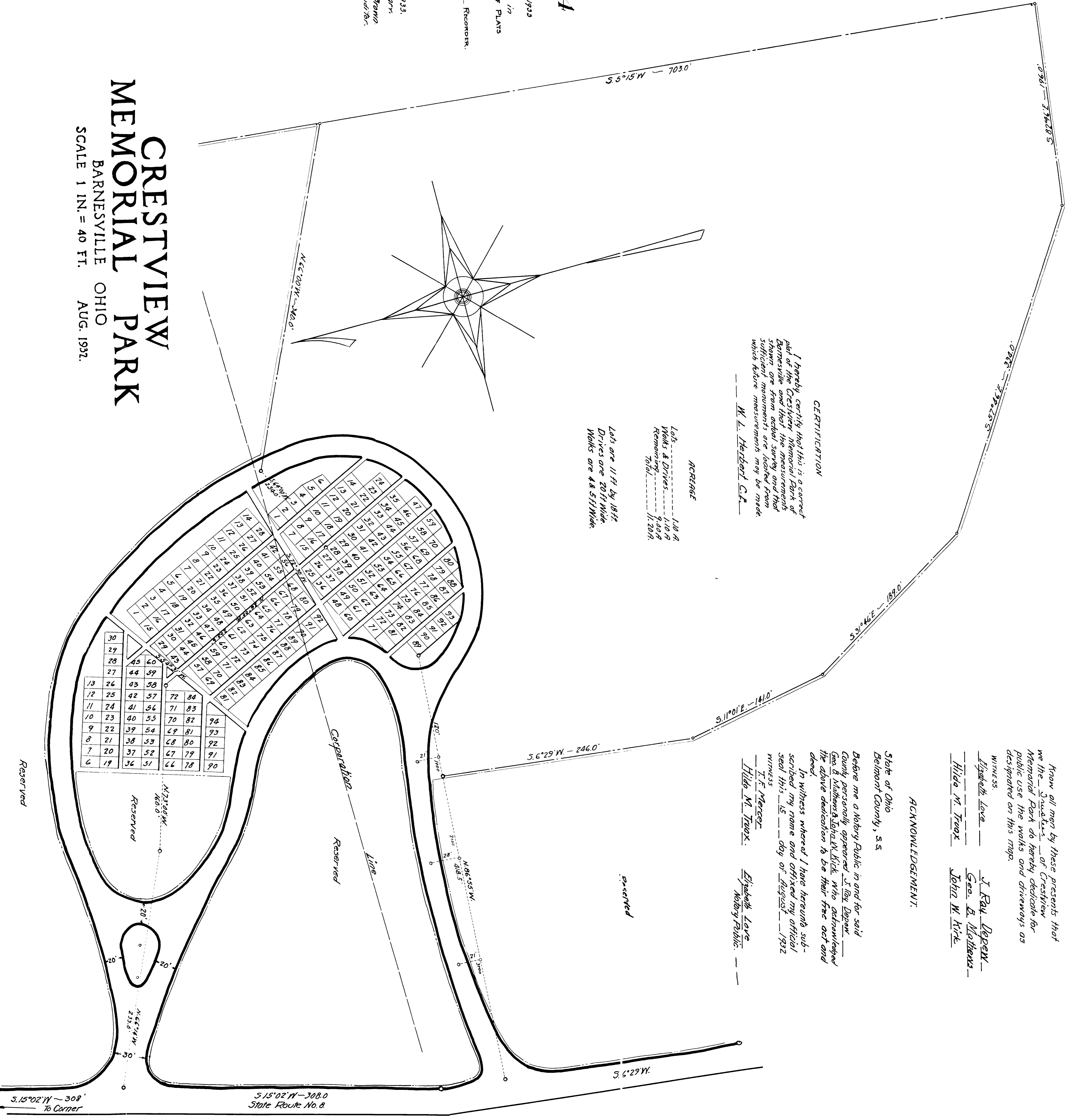
Received for Record Dec. 27, 1933
of 8:30 o'clock A.M.
Recorded December 29, 1933, in
BARNESVILLE COUNTY RECORD OF PLATS
Volume 10, Page 20.

Jesse A. WILSON, Recorder.
#25⁰⁰ P/L

Dec. 27, 1933.
Transfer not necessary.
Harry L. Brown
Dep. Auditor.

CRESTVIEW MEMORIAL PARK

BARNESVILLE OHIO
AUG. 1932.
SCALE 1 IN. = 40 FT.



CERTIFICATION
I hereby certify that this is a correct plat of the Crestview Memorial Park of Barnesville and that the survey and that shown are true and correct and that all measurements are taken from which future measurements may be made.
W. L. Herbert, C.E.

ACREAGE

Lots	1.10 A
Walks & Drives	1.10 A
Remaining	9.44 A
Total	11.20 A

Lots are 11 ft by 18 ft.
Drives are 20 ft wide.
Walks are 4 & 5 ft wide.

DEDICATION.

Know all men by these presents that we the undersigned of Crestview Memorial Park do hereby dedicate for public use the walks and driveways as designated on this map.

Witness:
Elizabeth Love
Geo. B. Mathews
Hilda M. Treax
John W. Nye

ACKNOWLEDGEMENT.

State of Ohio
Belmont County, ss

Before me a Notary Public in and for said County personally appeared J. Ray Depew, Geo. B. Mathews & John W. Nye who acknowledged the above dedication to be their free act and deed.

In witness whereof I have hereunto subscribed my name and affixed my official seal this 15 day of August, 1932
Witness
T. F. Mercer
Hilda M. Treax
Elizabeth Love
Notary Public.