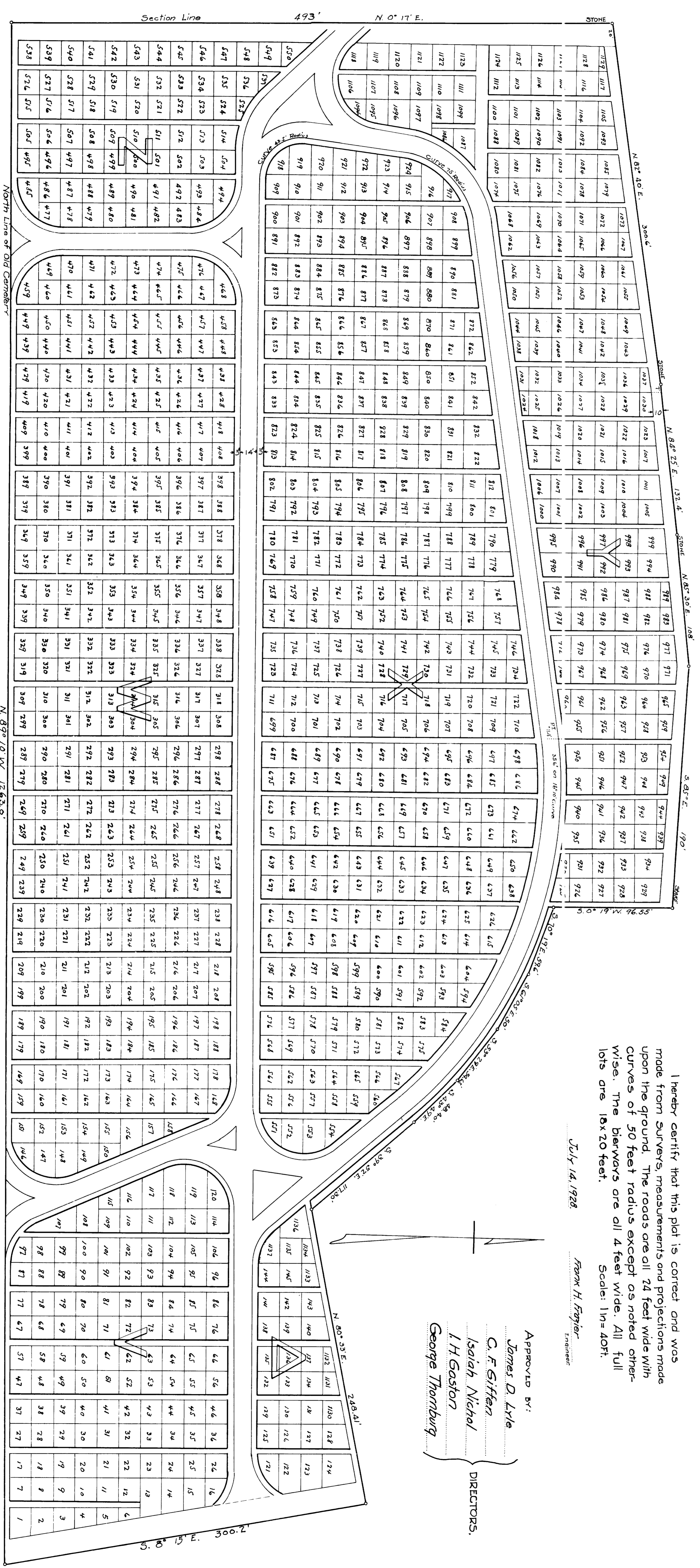


# SECOND ADDITION TO ST. CLAIRS VILLE UNION CEMETERY



I hereby certify that this plat is correct and was made from surveys, measurements and projections made upon the ground. The roads are all 24 feet wide with curves of 50 feet radius except as noted otherwise. The biways are all 4 feet wide. All full lots are 16x20 feet.

Scale: 1in=40ft.

July 14, 1928

Frank H. Fryer  
Engineer

APPROVED BY:

James D. Lyle  
C. F. Siffen  
Isaiah Nichol  
I. H. Gaston  
George Thornburg

DIRECTORS.

This platment is a part of a tract of land conveyed by Bruce Wallace to the St. Clairsville Union Cemetery Association by deed recorded in Vol. 354 Page 794 of the Deed Records of Belmont County Ohio, and is subject to the exceptions and reservations contained in said deed.

Received for Record Sept. 5, 1928  
At 10 O'Clock A. M.  
RECORDED 48364-47-1928  
In Belmont County Record at Paris  
Volume 12 PAGE 13  
A. A. DAVIS RECORDER  
Fee \$15.70.00