

# CENTERLINE SURVEY PLAT

## BELMONT COUNTY ROAD 44

### PULTNEY TOWNSHIP, BELMONT COUNTY, OHIO

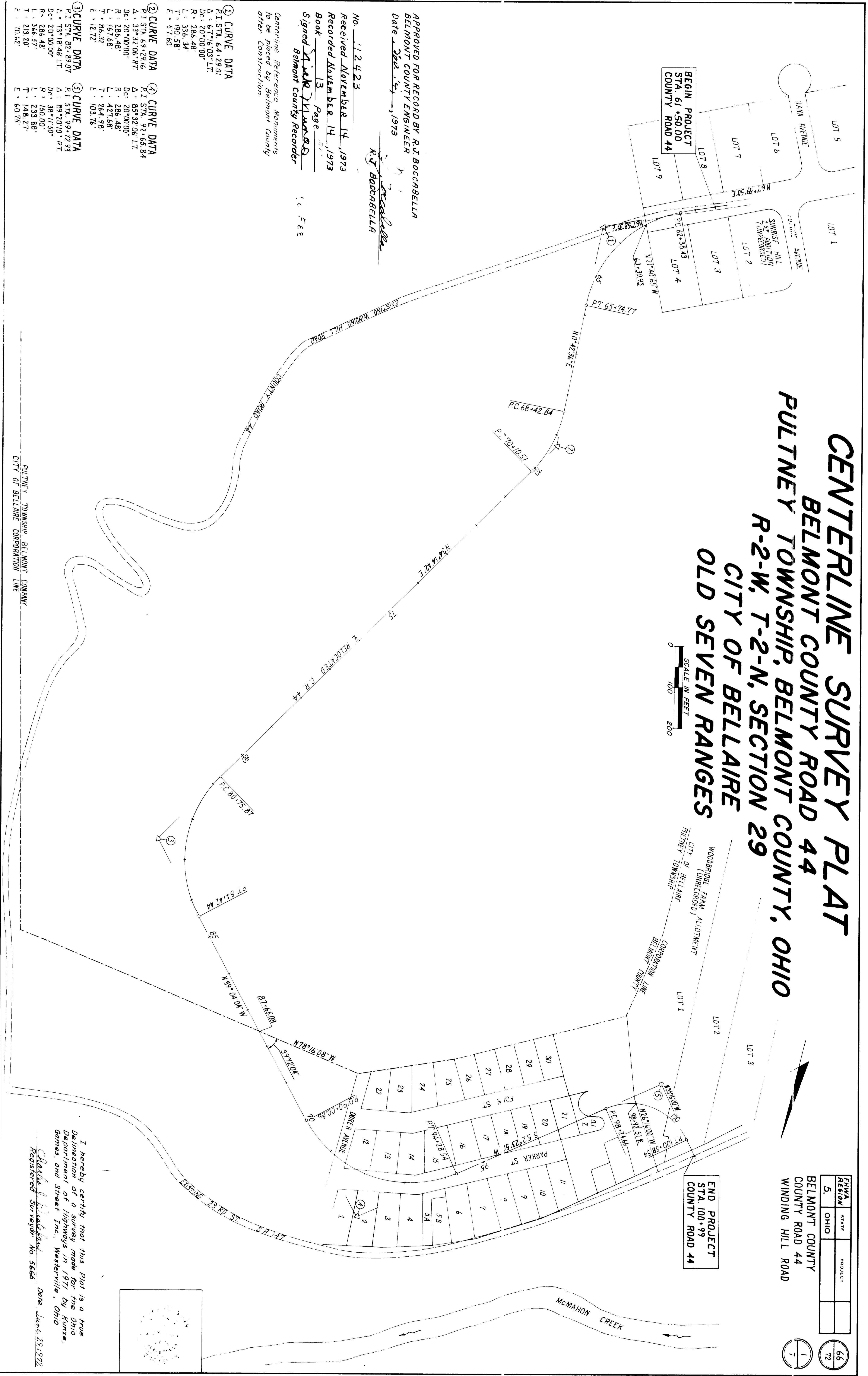
#### R-2-W, T-2-N, SECTION 29

#### CITY OF BELLAIRE

#### OLD SEVEN RANGES

SCALE IN FEET  
0 100 200

66	72
5	72
OHIO	PROJECT
BELMONT COUNTY	BELMONT COUNTY
COUNTY ROAD 44	COUNTY ROAD 44
WINDING HILL ROAD	WINDING HILL ROAD



APPROVED FOR RECORD BY R.J. BOCCABELLA  
BELMONT COUNTY ENGINEER  
Date Feb. 17, 1973  
*R.J. Boccabella*

No. 112423  
Received November 14, 1973  
Recorded November 14, 1973  
Book 13 Page 13  
Signed *Mark J. Leonard*  
Belmont County Recorder  
Centerline Reference Monuments  
to be placed by Belmont County  
after Construction

- ① CURVE DATA  
P.I. STA. 64+29.01  
A = 67°16'03" LT.  
Dc = 20°00'00"  
R = 286.48  
L = 336.34  
T = 190.58  
E = 57.60
- ② CURVE DATA  
P.I. STA. 69+29.16  
A = 33°32'06" RT.  
Dc = 20°00'00"  
R = 286.48  
L = 167.68  
T = 264.98  
E = 105.76
- ③ CURVE DATA  
P.I. STA. 92+65.84  
A = 85°32'06" LT.  
Dc = 20°00'00"  
R = 286.48  
L = 427.68  
T = 264.98  
E = 105.76
- ④ CURVE DATA  
P.I. STA. 92+65.84  
A = 85°32'06" LT.  
Dc = 20°00'00"  
R = 286.48  
L = 427.68  
T = 264.98  
E = 105.76
- ⑤ CURVE DATA  
P.I. STA. 92+65.84  
A = 85°32'06" LT.  
Dc = 20°00'00"  
R = 286.48  
L = 427.68  
T = 264.98  
E = 105.76
- ⑥ CURVE DATA  
P.I. STA. 92+65.84  
A = 85°32'06" LT.  
Dc = 20°00'00"  
R = 286.48  
L = 427.68  
T = 264.98  
E = 105.76

I hereby certify that this plat is a true  
Delimitation of a survey made for the Ohio  
Department of Highways in 1971 by Kunze,  
Gomes, and Street Inc., Westerville, Ohio.  
*Charles J. Stalder*  
Registered Surveyor No. 5666 Date June 23, 1972

CENTERLINE SURVEY PLAT