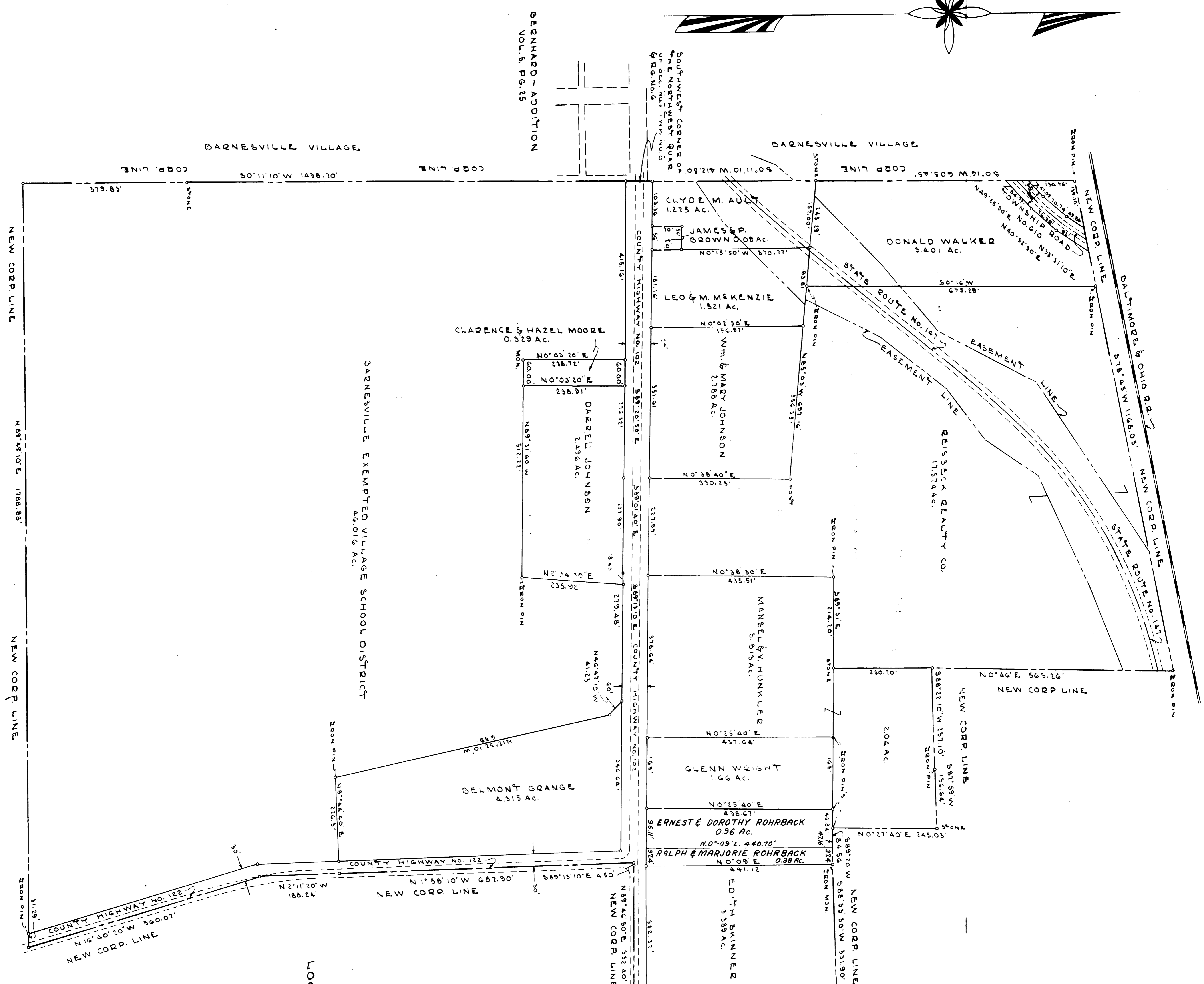


WARDENSBET CIVIL ENGINEER & SURVEYOR



ACREAGE IN TRACTS	90.691
ACREAGE IN STATE HIGHWAY EASEMENTS	511.407 IN TOTAL
ACREAGE IN COUNTY HIGHWAYS	3.395
ACREAGE IN TOWNSHIP ROAD	0.183
TOTAL	94.279

ANNEXATION MAP
 FOR
 EXTENSION OF CORPORATION LINES
 TO
 THE VILLAGE OF BARNESVILLE OHIO
 LOCATED IN WARREN TOWNSHIP DELMONT COUNTY OHIO
 SECTION NO. 9 TOWNSHIP NO. 8 & RANGE NO. 6
 SCALE 1"=100'
 APRIL 20, 1973