

**CENTERLINE SURVEY PLAT**

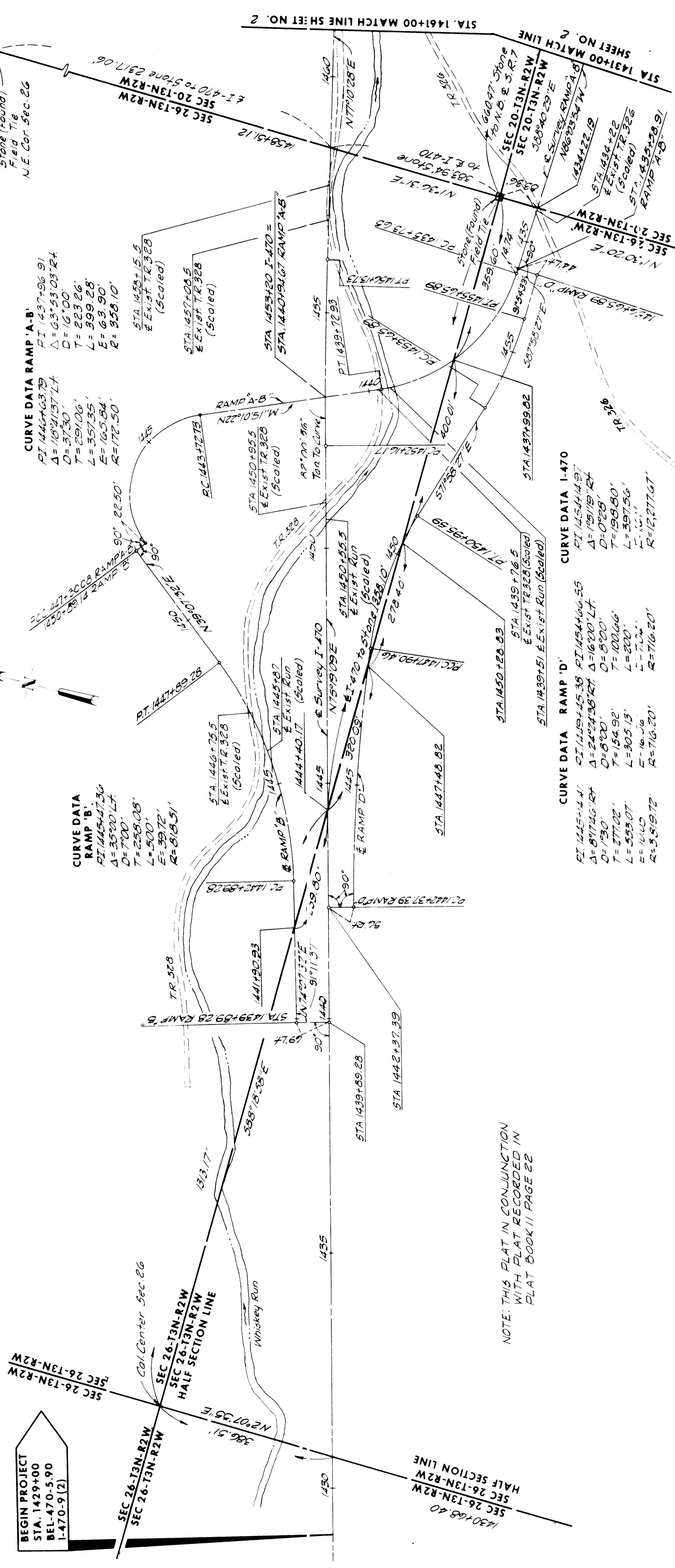
BEL-470-5.90  
BELMONT COUNTY, OHIO  
PULTNEY TOWNSHIP - SEC 26-13N-R2W

SCALE IN FEET  
0 100 200

**CENTERLINE PLAT SHEET 1 OF 2 SHEETS**

BEL-470-5.90  
RIGHT OF WAY PLAN  
LIMITED ACCESS

STATE	PROJECT
OHIO	I-470-9(2)
DIVISION	
2	



SEE PLAT SHEET 2 OF 2 SHEETS FOR PROPOSED MONUMENT LOCATIONS

BEGIN PROJECT  
STA. 1429+00  
BEL-470-5.90  
I-470-9(2)

NOTE: THIS PLAT IN CONJUNCTION WITH PLAT RECORDED IN PLAT BOOK 11 PAGE 22

APPROVED FOR RECORD  
*R. J. Boccabella*  
R. J. BOCCABELLA  
COUNTY ENGINEER  
DATE July 17, 1970

I HEREBY CERTIFY THAT THIS PLAT IS A TRUE DELINEATION OF A SURVEY MADE FOR THE OHIO DEPARTMENT OF HIGHWAYS IN  
BY *William E. Quicksall, Jr.*  
DATE July 17, 1970  
WILLIAM E. QUICKSALL, JR.  
REG. SURVEYOR NO. 4710

RECEIVED JULY 20 1970  
RECORDED AUG. 2 1970  
BOOK 13 PAGE 61  
*Nick Ylunas*  
COUNTY RECORDER  
#32.00 FEE PAID  
DATE 7-9-70 DIVISION DEPUTY DIRECTOR  
SIGNED *Lani Kimmel*  
DATE 7-9-70 DIVISION DEPUTY DIRECTOR

THIS IMPROVEMENT HAS BEEN DECLARED A LIMITED ACCESS HIGHWAY FROM STATION 1429+00 TO STATION 1468+00 BY ACTION OF THE DIRECTOR OF HIGHWAYS AND RECORDED IN VOLUME 50, PAGE 910 OF THE DIRECTOR'S JOURNAL PURSUANT TO LAW.

CENTERLINE SURVEY PLAT

For Re-recording See Volume 13 Page 79-Plats

61