

55

THIS IMPROVEMENT HAS BEEN DECLARED A LIMITED ACCESS HIGHWAY FROM STATION 1286+00 TO STATION 10+50.91, BY ACTION OF THE DIRECTOR OF HIGHWAYS AND RECORDED IN VOLUME 51 PAGE 991, OF THE DIRECTOR'S JOURNAL PURSUANT TO LAW.

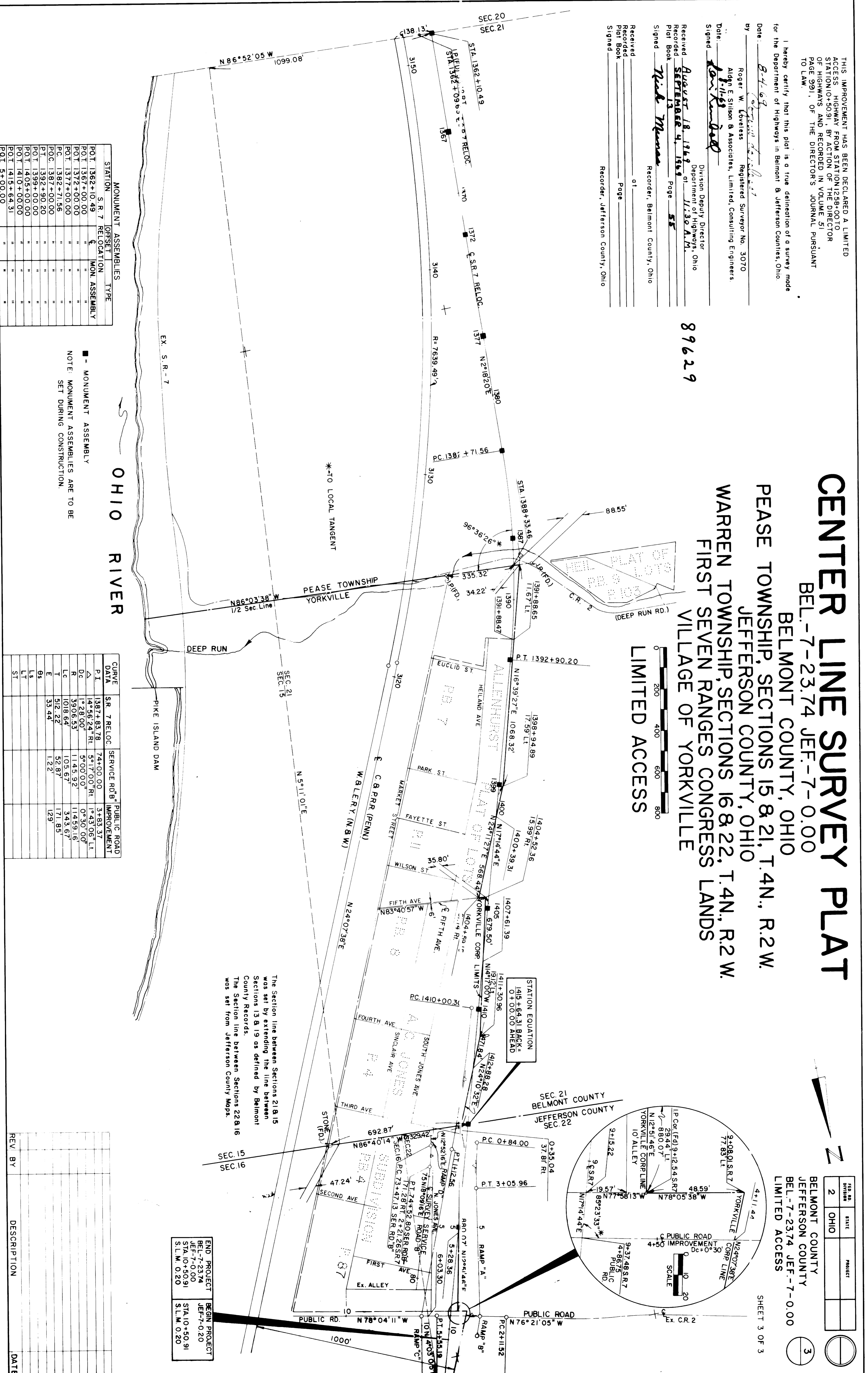
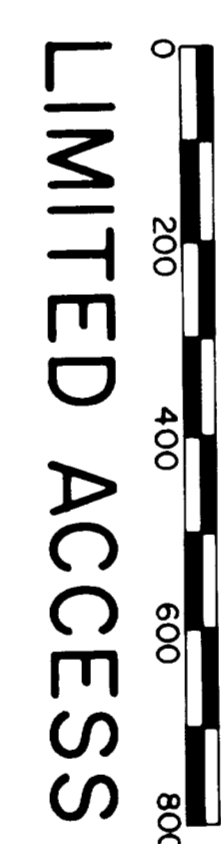
I hereby certify that this plat is a true delineation of a survey made for the Department of Highways in Belmont & Jefferson Counties, Ohio

Date: 8-1-68
 by: Roger W. Lovelless Registered Surveyor No. 3070
 Alden E. Sisson & Associates, Limited, Consulting Engineers
 Date: 8-1-68
 Signed: Neil Munn Division Deputy Director
 Department of Highways, Ohio
 Received August 18, 1968 at 11:30 A.M.
 Recorder, Belmont County, Ohio
 Received September 4, 1968 at 5
 Recorder, Jefferson County, Ohio

89629

CENTER LINE SURVEY PLAT

BEL-7-23.74 JEF-7-0.00
 BELMONT COUNTY, OHIO
 PEASE TOWNSHIP, SECTIONS 15 & 21, T.4N., R.2W.
 JEFFERSON COUNTY, OHIO
 WARREN TOWNSHIP, SECTIONS 16 & 22, T.4N., R.2W.
 FIRST SEVEN RANGES CONGRESS LANDS
 VILLAGE OF YORKVILLE
 LIMITED ACCESS



STATION	S. R. 7	OFFSET	RELOCATION	MON. ASSEMBLY	TYPE
POT 1362+00.00					
POT 1367+00.00					
POT 1372+00.00					
POT 1377+00.00					
POT 1382+00.00					
POT 1387+00.00					
POT 1392+00.00					
POT 1397+00.00					
POT 1402+00.00					
POT 1407+00.00					
POT 1412+00.00					
POT 1415+64.31					
POT 5+00.00					

NOTE: MONUMENT ASSEMBLY SET DURING CONSTRUCTION.

CURVE DATA	S.R. 7 RELOC.	SERVICE ROAD IMPROVEMENT	PUBLIC ROAD IMPROVEMENT
P.I.	1387+83.78	74+00.00	3+83.37
P.C.	1426+24.71	5+17.00	1+43.08
P.T.	1428+00.00	5+00.00	0+30.00
R	3906.53	1145.92	11459.16
L.C.	1018.64	105.67	343.67
T	512.22	52.87	171.85
E	33.44	1.22	129
L.S.			
L.T.			
S.T.			

REV.	BY	DESCRIPTION	DATE

The section line between Sections 21 & 15 was set by extending the line between Sections 13 & 19 as defined by Belmont County Records.
 The section line between Sections 22 & 16 was set from Jefferson County Maps.

END PROJECT BEL-7-23.74 JEF-7-0.00 STA. 10+50.91
 BEGIN PROJECT BEL-7-23.74 JEF-7-0.00 STA. 10+50.91
 S.L.M. 0.20 S.L.M. 0.20

TAX MAP	STATE	PROJECT
2	OHIO	

BELMONT COUNTY
 JEFFERSON COUNTY
 BEL-7-23.74 JEF-7-0.00
 LIMITED ACCESS

SHEET 3 OF 3