

29.

EXTENSION OF THE CORPORATE LIMITS OF THE CITY OF MARTINS FERRY, OHIO - 1964

COPY OF JOURNAL ENTRY

In the Matter of Annexing Territory to The City of Martins Ferry, Ohio

On this day a majority of the Board of Commissioners of Belmont County, Ohio, passed a resolution...

HEARING HAD

This being the hour at which hearing should be had in the above entitled matter...

Wm. J. Shriver, Mayor

I hereby certify the above to be true copies of the Journal Entries pertaining to the annexation of territory to the City of Martins Ferry as described in petition presented to the County Commissioners.

Recorded - Vol. 41 Page 147 County Commissioners Journal

ORDINANCE

Be it ordained by the Council of the City of Martins Ferry, State of Ohio: That the Board of Commissioners of Belmont County, Ohio, be and they are authorized to annex to the City of Martins Ferry...

Whereas the Board of Commissioners of Belmont County, Ohio, has passed a resolution...

CLERK OF COUNCIL

William J. Shriver, Clerk of Council of the City of Martins Ferry, do hereby certify that the foregoing is a true transcript of proceedings for the annexation of the territory described therein.

Signed by me this 17th day of June, 1964.

Wm. J. Shriver, Mayor

AREAS: ROADS 2.990 AC., C.&P.R.R. 3.670 AC., W.&L.E.R.R. 7.711 AC., LANDS 10.237 AC., TOTAL 24.608 AC.

COUNTY RECORDER

Received for Record March 31, 1965 at 10:14 a.m. Belmont County Records of Plats - Volume 13 Page 299

COUNTY AUDITOR

Transferred by Belmont County Auditor Date 3-31-1965. Fee \$30.00 PAID

COUNTY ENGINEER

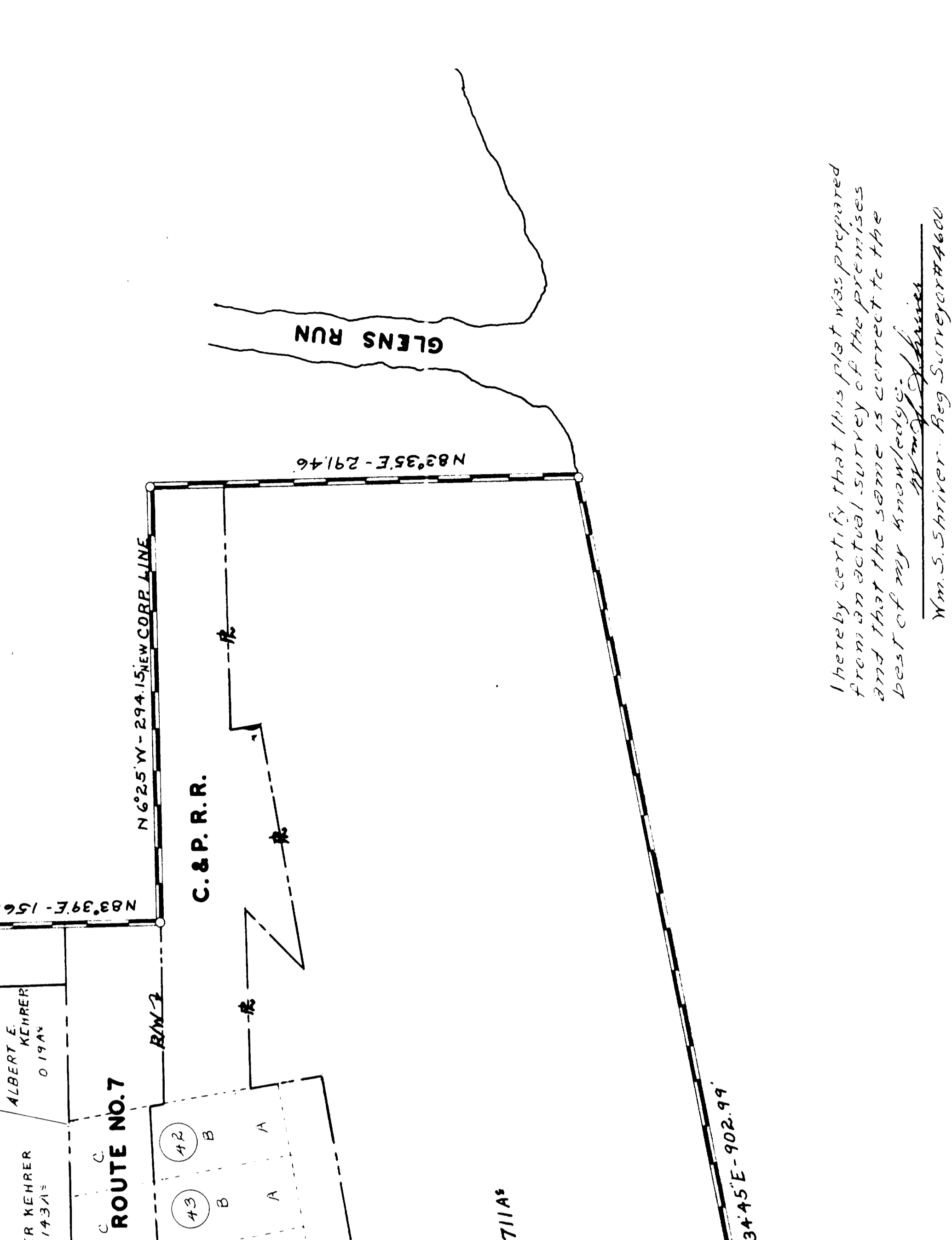
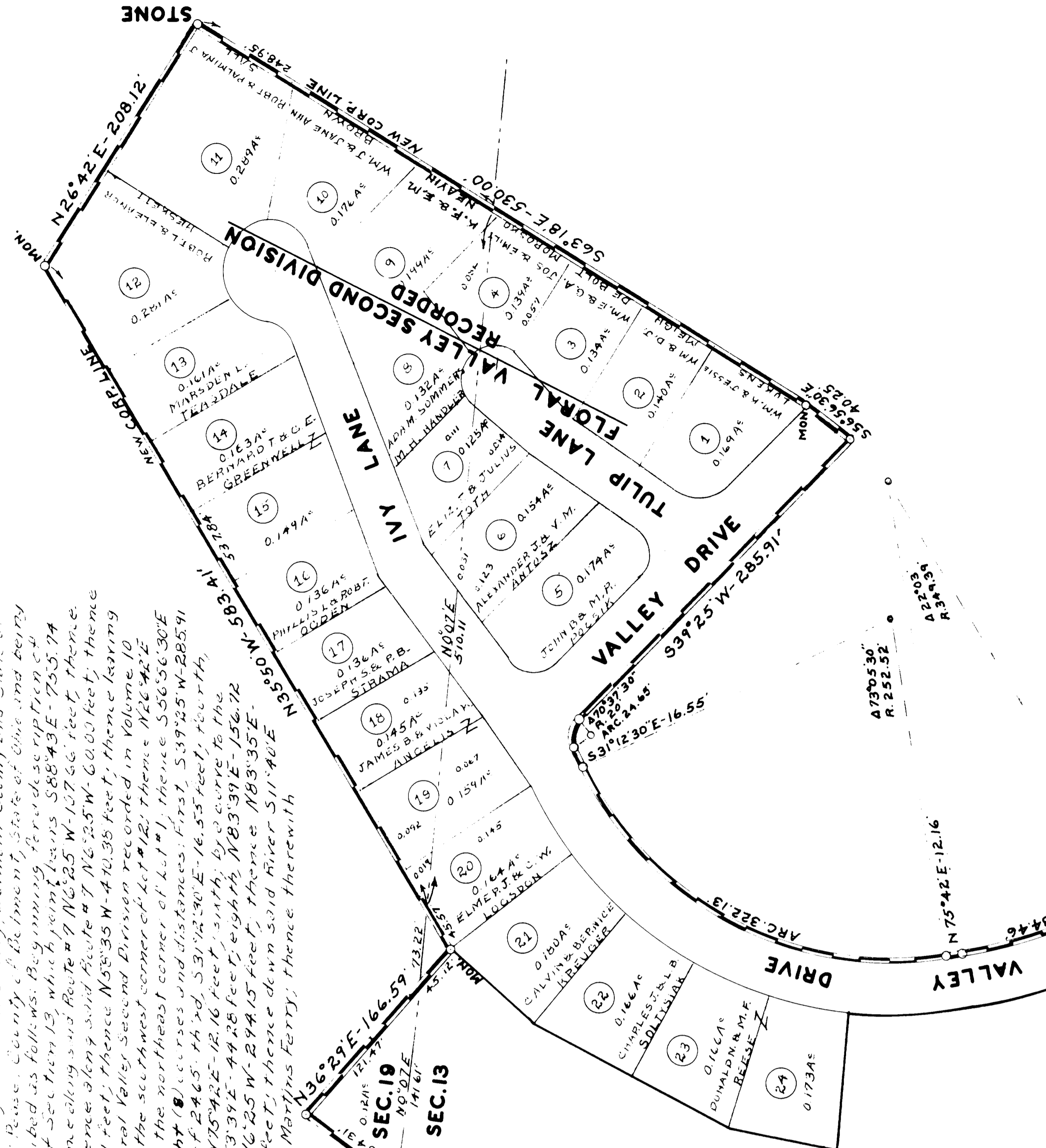
Approved for Record Date 3-25-1965.

Belmont County Engineer

ORDINANCE

An Ordinance to authorize annexation of certain contiguous territory to the City of Martins Ferry, State of Ohio.

Be it ordained by the Council of the City of Martins Ferry, State of Ohio: That the annexation of the following described territory to the City of Martins Ferry, Belmont County, Ohio, be and they are authorized...



OHIO RIVER

I hereby certify that this plat was prepared from an actual survey of the premises and that the same is correct to the best of my knowledge and belief.

Wm. S. Shriver, Reg. Surveyor #4600