

This improvement has been declared a Limited Access Highway from Sta. 330+00 to Sta. 355+75, by action of The Director of Highways and recorded in Volume 46, Page 508, of The Director's Journal Pursuant To Law.

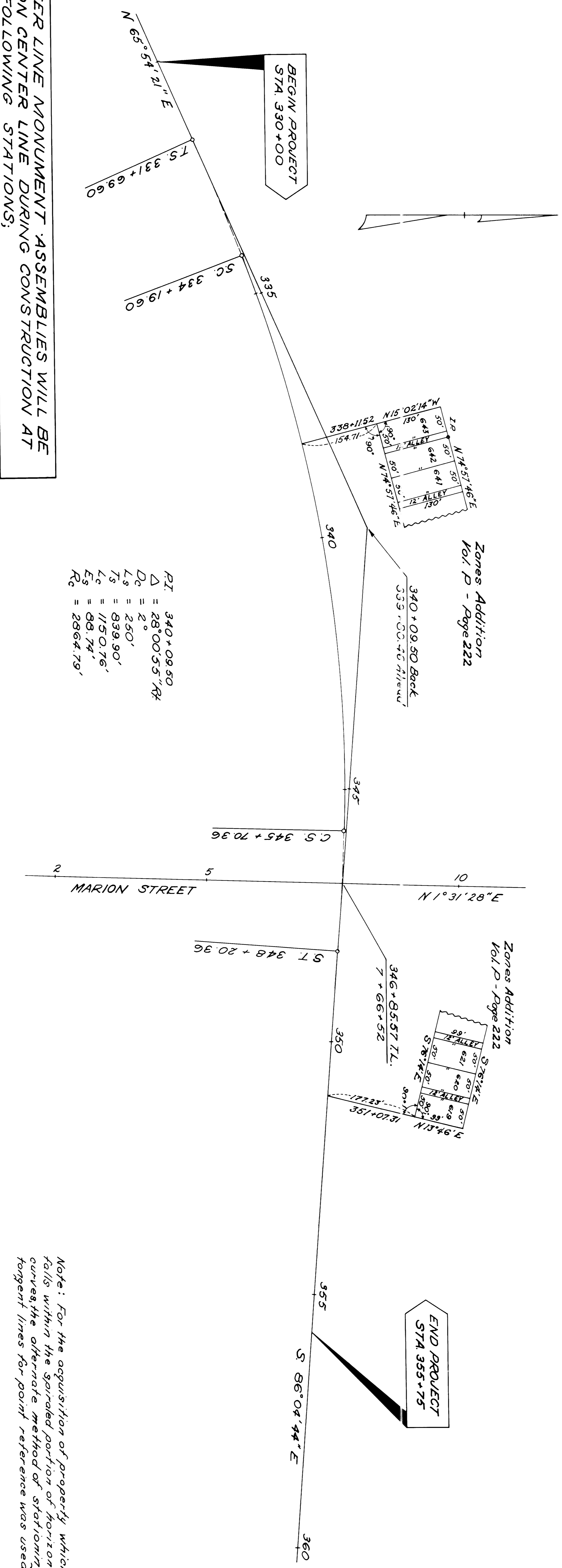
CENTER LINE SURVEY PLAT

U. S. ROUTE 40 SEC. 26.43

BELMONT COUNTY, OHIO

PEASE TOWNSHIP SEC. 27 & 28-T3N-R2W

VILLAGE OF BRIDGEPORT



PI. 340+09.50
 $\Delta = 28^{\circ}00'35.74''$
 $D_c = 2^{\circ}$
 $L_s = 250'$
 $L_c = 839.90'$
 $L_e = 1150.176'$
 $E_s = 88.74'$
 $R_c = 2864.79'$

CENTER LINE MONUMENT ASSEMBLIES WILL BE SET ON CENTER LINE DURING CONSTRUCTION AT THE FOLLOWING STATIONS:

- T.S. 331+69.60
- S.C. 334+19.60
- P.O.C. 340+00
- C.S. 345+70.36
- S.T. 348+20.36
- P.O.T. 352+00

MARION STREET
P.O.T. 3+00
P.O.T. 9+00

No. 58477
Received for Record **JAN 20, 1964**
Recorded 3:41 PM - FEB 20, 1964
Recorded Book 13 Page 23 of the
Belmont County Records.
Nick Mural
County Recorder
By W.R. Adams
Deputy

\$40 75 Paid.

Note: For the acquisition of property which falls within the spiraled portion of horizontal curves the alternate method of stationing tangent lines for point reference was used.

Signed Paul W. Keating
Division Deputy Director
Date 12-30-63
I hereby certify that this plat is a true delineation of a survey made for the Ohio Department of Highways in 1963 by the State of Ohio.
Paul Keating
Registered Surveyor
Date 12-30-63

Approved for recording
W. J. Baccaloni
Belmont C. Enger
1/1/64