

OWNERS CONSENT AND DEDICATION
 The undersigned being all the owners of the lands herein, do hereby voluntarily and irrevocably consent to the execution and recording of this plat and do dedicate the streets as shown herein to the public use forever. We also hereby dedicate easements to run with the land, for drainage easements on or over those certain strips of land delineated hereon as drainage easements.

The Lorain Coal & Dock Co.
 by Edna Sincovich
 Secretary

Belmont Industrial Park, Inc.
 by John E. Zini
 Secretary

COUNTY ENGINEER
 Approved for Record
 Date Oct 17 1962 Belmont County Engineer

COUNTY COMMISSIONERS
 Approved for Record subject to the rules and regulations governing the platting of Subdivisions of land
 BELMONT COUNTY COMMISSIONERS
 Date Oct 17 1962

COUNTY AUDITOR
 Transferred by Belmont County Auditor
 Date Oct 17 1962 For 175 Pl. R. 1874

COUNTY RECORDER
 Received for Record Oct 19 1962
 At 10:47 O'clock A. M.
 Record 10:47 Belmont County Record of Plats
 Volume 13 page 15 Recorder
Richard J. Howard

STATE OF OHIO
 BELMONT COUNTY ss
 I, the undersigned Notary Public in and for said County, do hereby certify that this Map is true and correct. Survey made by me in July 1961 that all Monumentations are as shown.

Edna Sincovich
 Secretary

John E. Zini
 Secretary

Richard J. Howard
 Recorder

Notary Public in and for Belmont County Ohio.

CERTIFICATE OF ENGINEER
 The within plat is a subdivision of land conveyed to Belmont Industrial Park, Inc. by deeds recorded in the deed records of Belmont County Ohio.

The Lorain Coal & Dock Co. Vol. 462 Pg. 815
 Vol. 465 Pg. 130
 Vol. 462 Pg. 621
 Vol. 462 Pg. 554

LEGEND
 Edna Sincovich
 Frank Jowarski

PD - Previous Dedication
 ND - New Dedication
 RL - Recorded lot
 VL - Vacated lot
 Mon - Monument
 Iron - Iron pin

Acres contained in dedicated streets 2.108 Acres.
 Acres contained in lots 11.230 Acres.
 Lot No. 1 11.230 Ac.

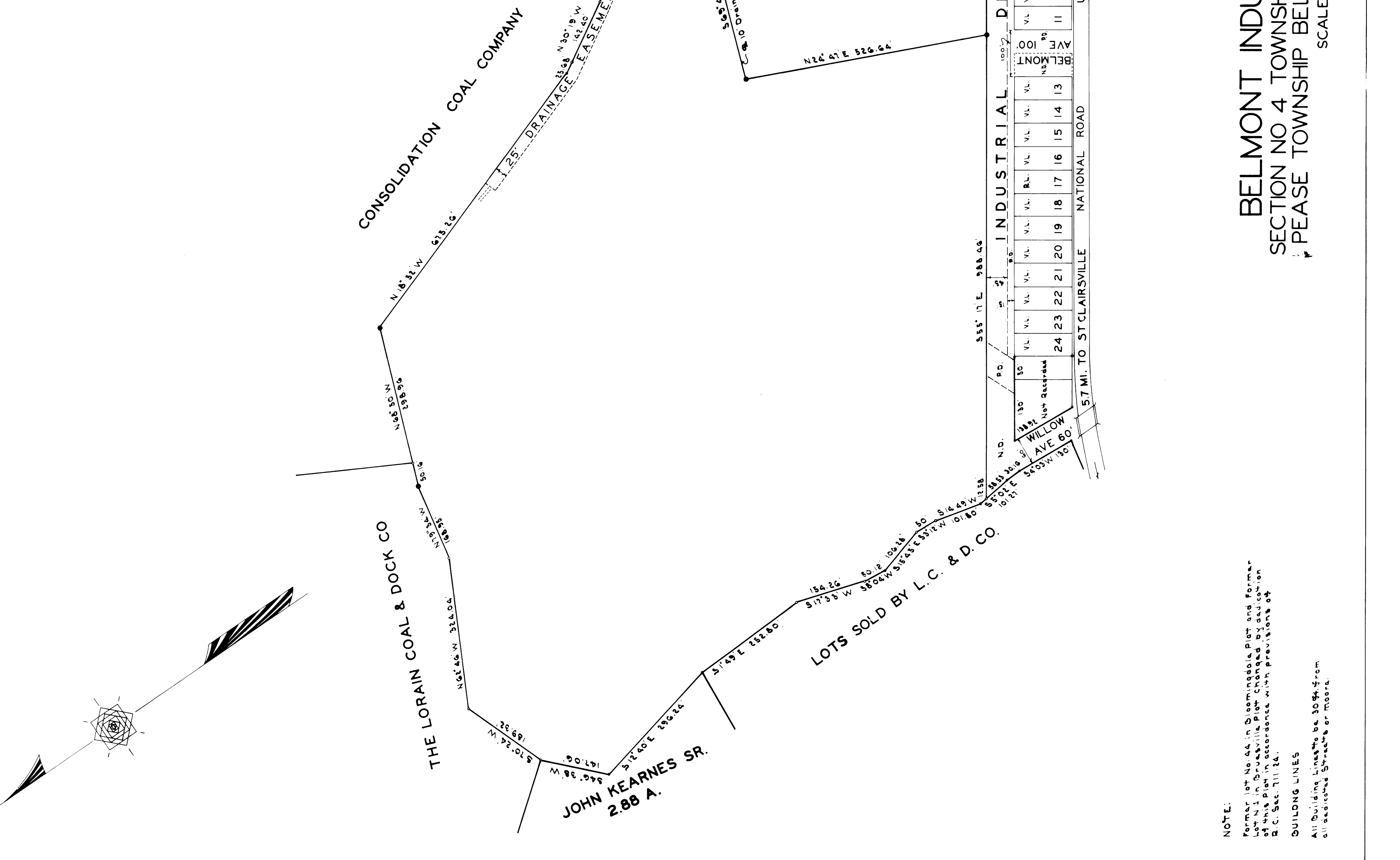
WILLOW AVENUE
 60 Ft. New dedication 0.181 Ac.
 15 Ft. ALCY previously dedicated Plat Bk. 3 Pg. 75 0.431 Ac.
 60 Ft. Street previously dedicated Plat Bk. 3 Pg. 75 0.085 Ac.
 45 Ft. New dedication 1.224 Ac.
 60 Ft. New dedication 0.299 Ac.

BELMONT AVENUE
 50 Ft. Previously dedicated Plat Bk. 3 Pg. 75 0.136 Ac.
 50 Ft. New dedication 0.136 Ac.

WHEELING AVENUE
 50 Ft. Previously dedicated Plat Bk. 3 Pg. 75 0.136 Ac.

I hereby certify that this Map is true and correct. Survey made by me in July 1961 that all Monumentations are as shown.

Edna Sincovich
 Secretary



BELMONT INDUSTRIAL PARK
 SECTION NO 4 TOWNSHIP NO 6 RANGE NO 3
 PEASE TOWNSHIP BELMONT COUNTY OHIO

SCALE 1=100

NOTE:
 Former lot No. 44 in Bloomington Plat and Former Lot No. 1 in Bruesville Plat changed by dedication of this plat in accordance with provisions of R. C. Sec. 711.34.

BUILDING LINES
 All Building Lines to be 30 Ft. from all dedicated Streets or Moors.