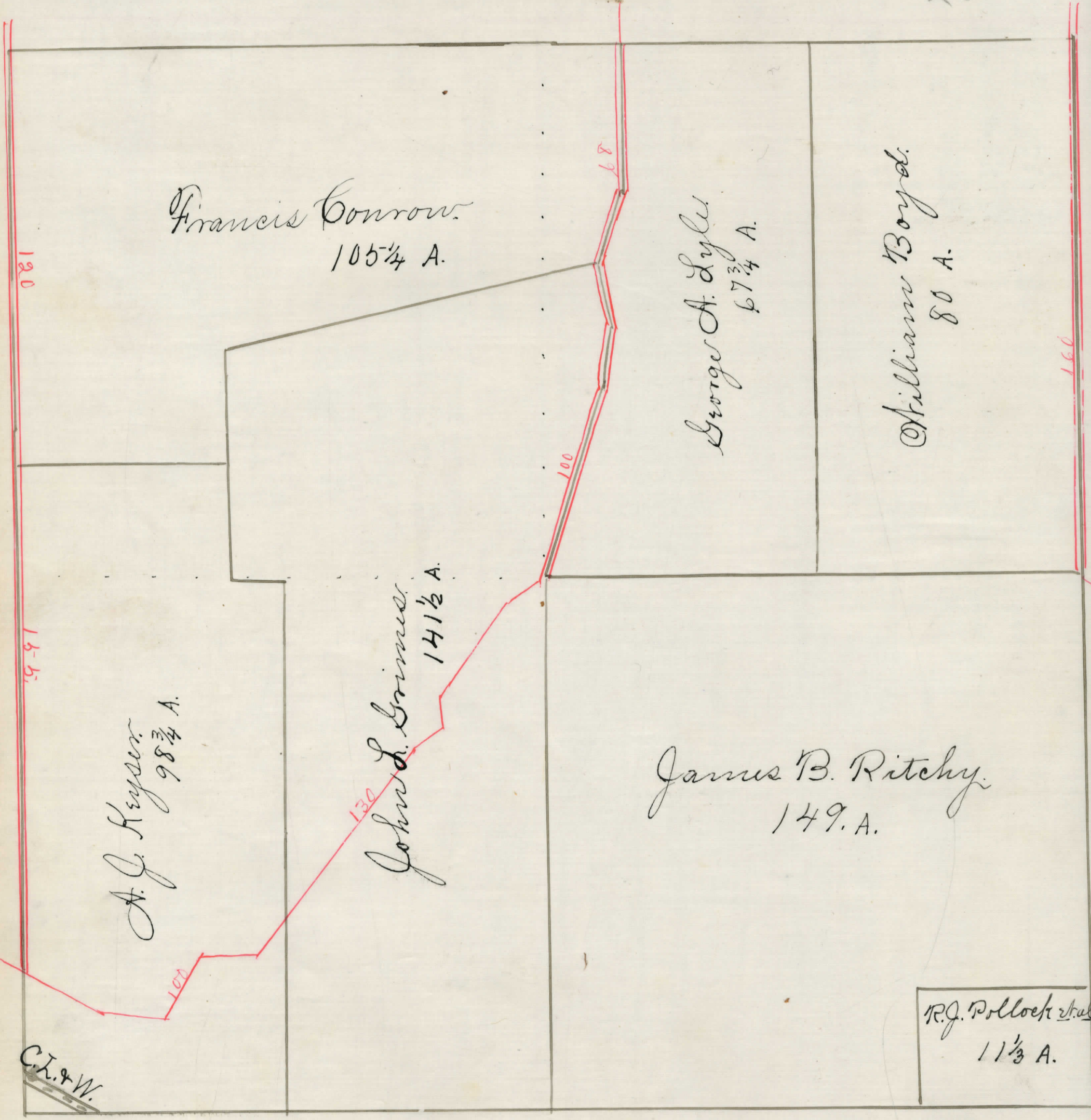


District No.

Township.

CONGRESS LANDS.

25



Francis Conrow.
105 ¹/₄ A.

George A. Lyle
67 ³/₄ A.

William Boyd.
80 A.

A. G. Keyser
98 ³/₄ A.

John D. Brimmer.
141 ¹/₂ A.

James B. Ritchy.
149 A.

R. G. Pollock
11 ¹/₂ A.

C.L. & W.